



68. Drivers Cabin Entrance Door CaraD-I100plus

Part-No. 1382

68.1. Content

68.2. Ordering Details

68.3. Technical Drawing

68.4. Spare Parts Complete Components

68.5. Spare Parts Door Panel

68.6. Spare Parts Interior Cover

68.7. Spare Parts Locking System

68.8. Spare Parts Darkening System

68.9. Spare Parts Exterior Frame

* = only for manufacturers



68.2. Drivers Cabin Entr. Door CaraD-I100plus - Ordering Details

Ordering size: 1600 x 700 in mm (Aperture size see technical drawing)

Position of hinge:

(View from outside)

☐ left side

Wall thickness:

_____ mm (28 – 30)

Colour:

	Darkening System	Door panel	Exterior frame	Interior cover	Cover pocket Inner handle	Outer handle
<input type="checkbox"/>	grey	NCS0010R70B	NCS0010R70B	RAL 9016	RAL 7045	RAL 7035

Lock version:

prepared for lock cylinder of the following manufacturer

☐ Oberholz

☐ Zadi

Accessories:

Customer:

Part no. Customer:

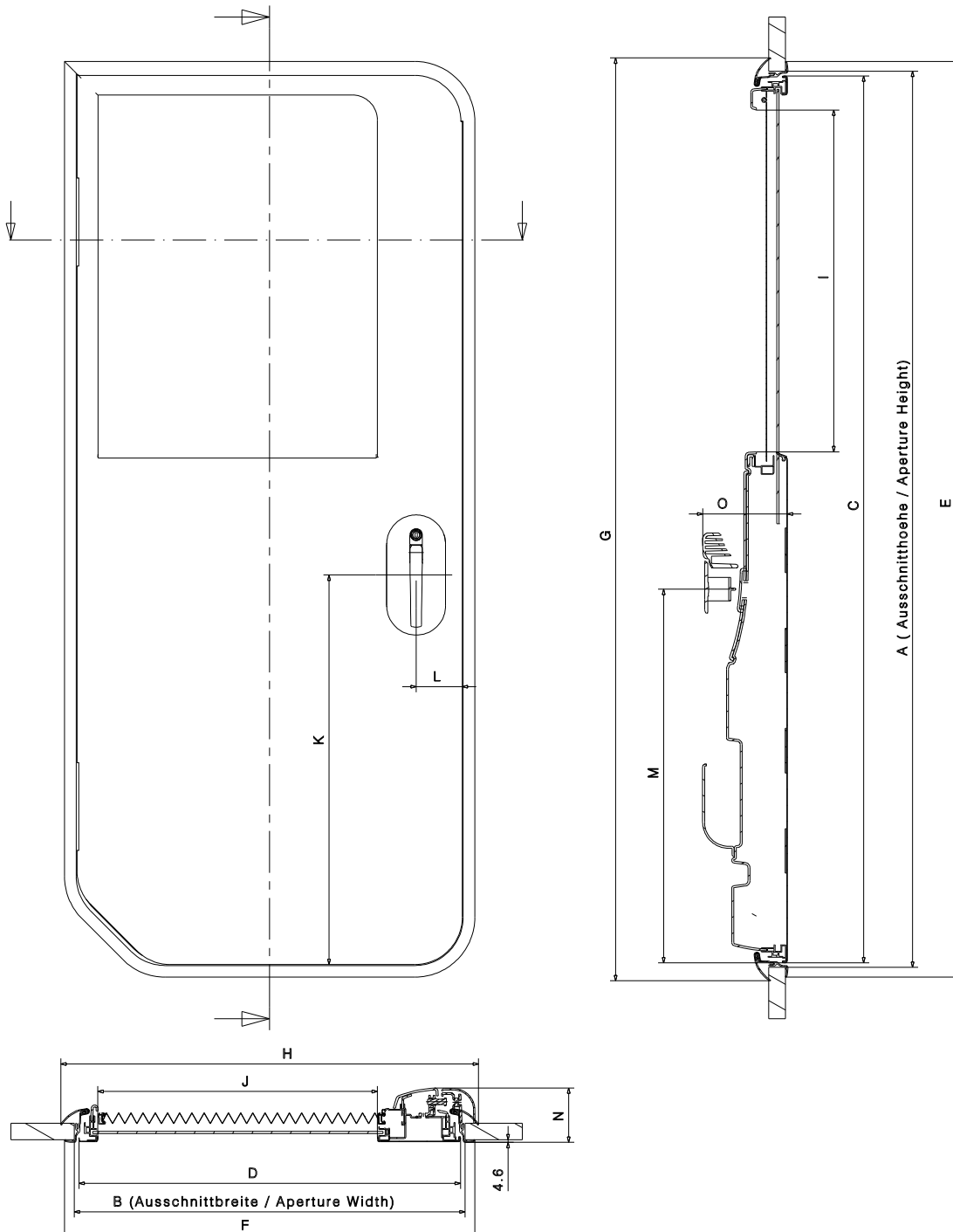
Remark:

Signature:

Date:

* = only for manufacturers

68.3. Drivers Cabin Entrance Door CaraD-I100plus - Technical Drawing



Türbestellmaß	Maß A	Maß B	Maß C	Maß D	Maß E	Maß F	Maß G	Maß H	Maß I	Maß J	Maß K	Maß L	Maß M	Maß N	Maß O	Gewicht
Order-Dimension	Dim A	Dim B	Dim C	Dim D	Dim E	Dim F	Dim G	Dim H	Dim I	Dim J	Dim K	Dim L	Dim M	Dim N	Dim O	Wight
1600 x700	1610	703	1593,5	686,5	1645	738	1658	751	614	503	700	83	671	99	167	29,5 kg

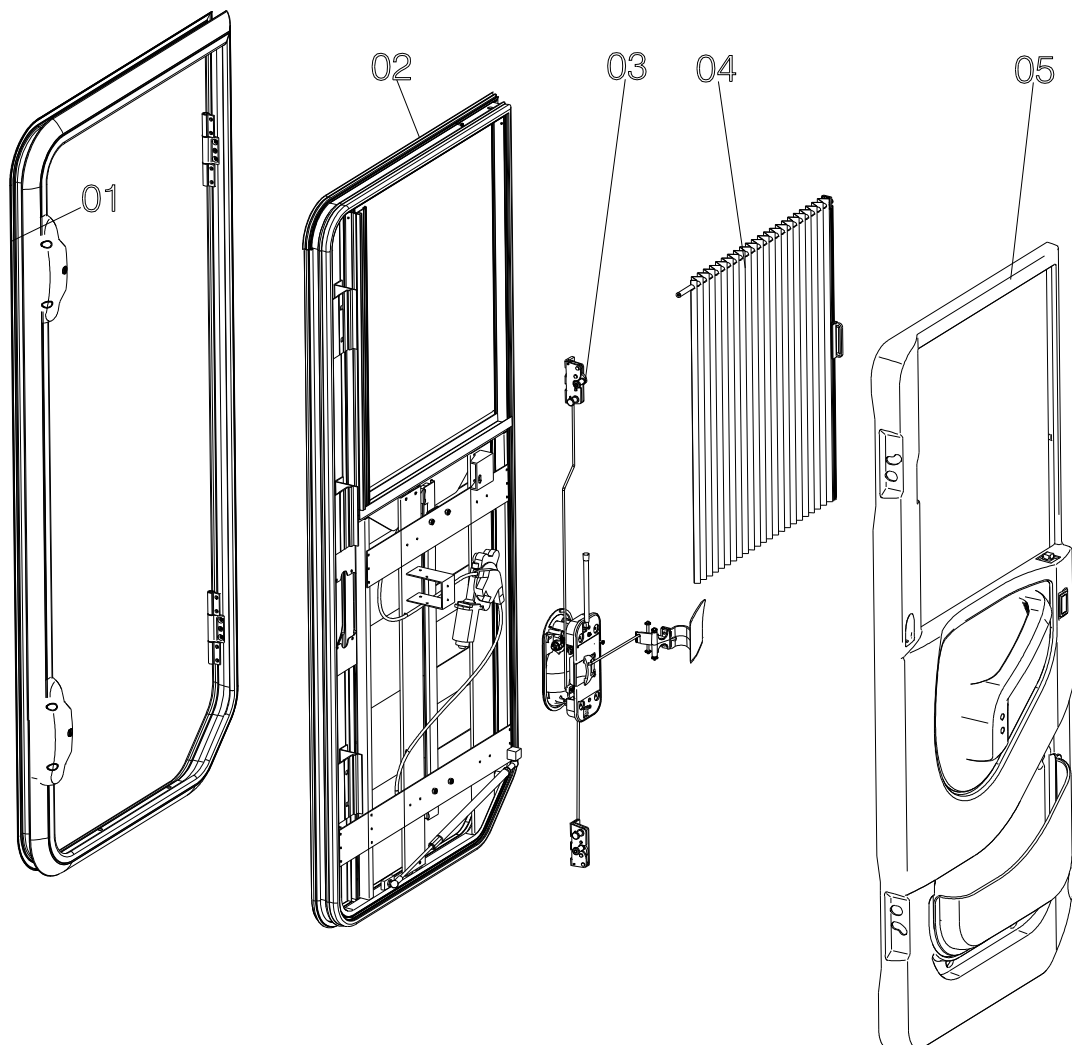
* = only for manufacturers

68.4. Drivers Cabin Entr. Door CaraD-I100plus

Spare Parts Complete Components

	Description	Part No.	Pack. Unit
01	Exterior frame, cpl.	BG 1602	1 pc.
02	Door panel, cpl.	BG 1603	1 pc.
03	Locking system, cpl.	BG 1604	1 pc.
04	Darkening system, cpl.	BG 1605	1 pc.
05	Interior cover, cpl.	BG 1606	1 pc.

Important: When ordering specify - description, quantity, wall thickness, colour and aperture size of door.

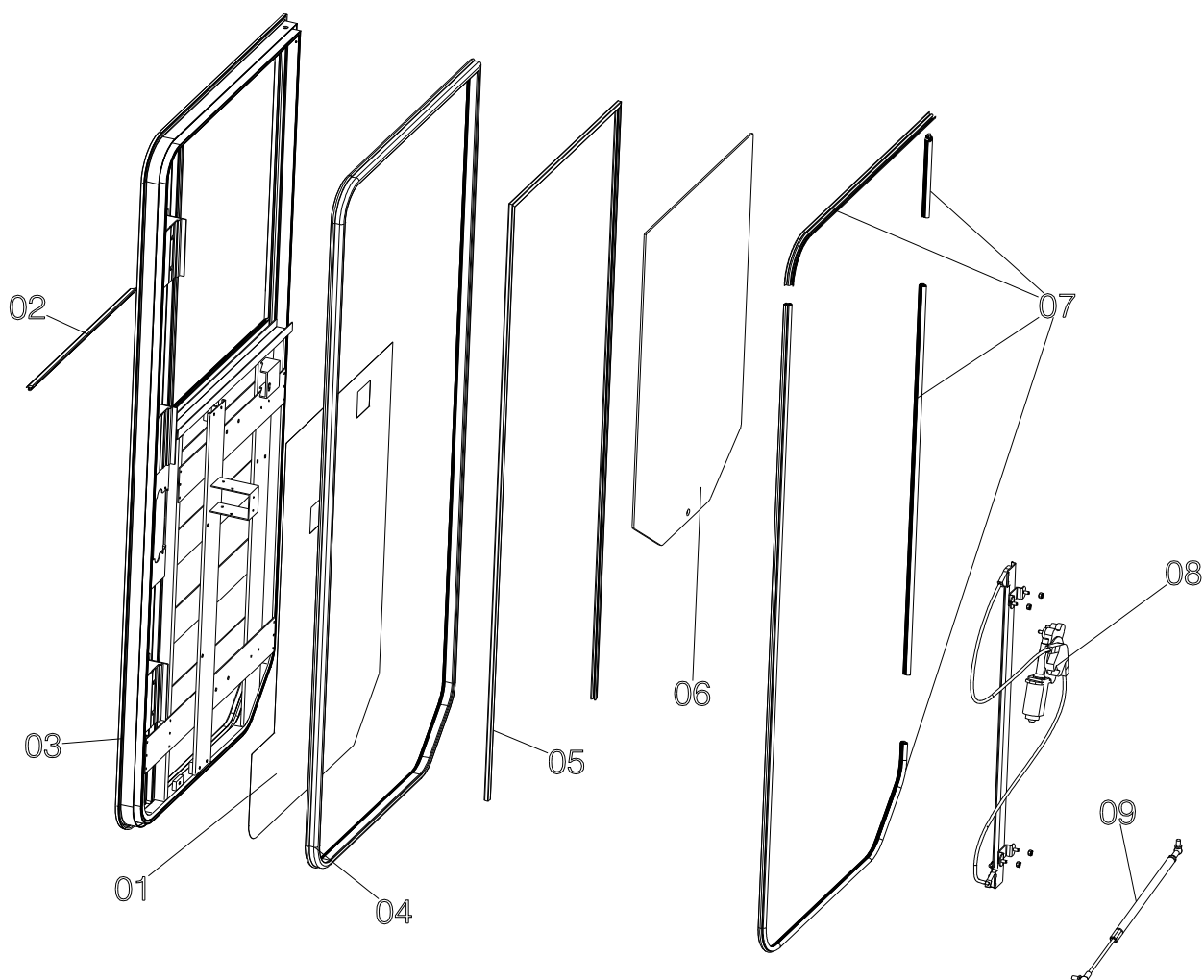


* = only for manufacturers

68.5. Drivers Cabin Entr. Door CaraD-I100plus - Spare Parts Door Panel

	Description	Part No.	Pack. unit
01	Cover foil with sealant	BG 1616	1 pc.
02	Rubber profile	BG 1617	1 pc.
03	Door panel without assembly parts	BG 1618	1 pc.
04	Door rubber profile (inner lying)	BG 1619	1 pc.
05	Rubber profile for window	BG 1620	1 set
06	Glazing panel	BG 1621	1 pc.
07	Door rubber profile (outer lying)	BG 1622	1 set
08	Window regulator with fixings	BG 1623	1 pc.
09	Door stay with fixings	BG 1624	1 pc.

Important: When ordering specify – description, quantity, wall thickness, colour and aperture size of door.

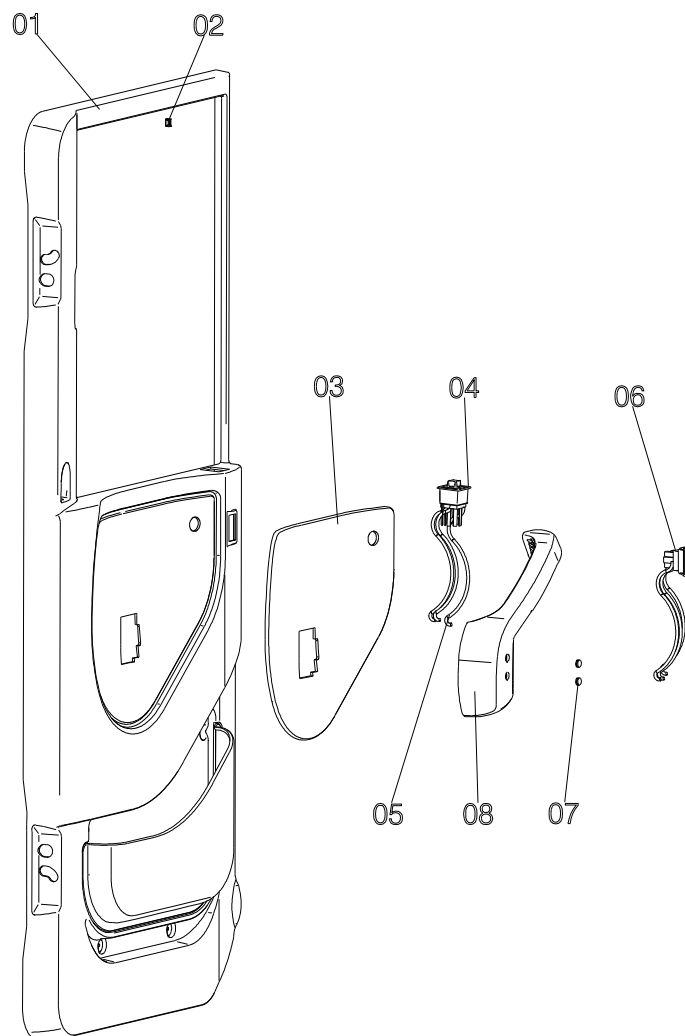


* = only for manufacturers

68. Drivers Cabin Entr. Door CaraD-I100plus - Spare Parts Interior Cover

	Description	Part No.	Pack. Unit
01	Interior cover with pocket	BG 1625	1 pc.
02	Clamps (Pack. Unit = 6 pcs.)	BG 1626	1 set.
03	Cover	BG 1627	1 pc.
04	Control button for mirror	BG 1628	1 pc.
05	Cable harness for control button (mirror)	BG 1629	1 pc.
06	Cable harness with control button for window regulator	BG 1630	1 pc.
07	Cover caps (Pack. Unit = 2 pcs.)	BG 1631	1 set
08	Inner handle	BG 1632	1 pc.

Important: When ordering specify – description, quantity, wall thickness, colour and aperture size of door.

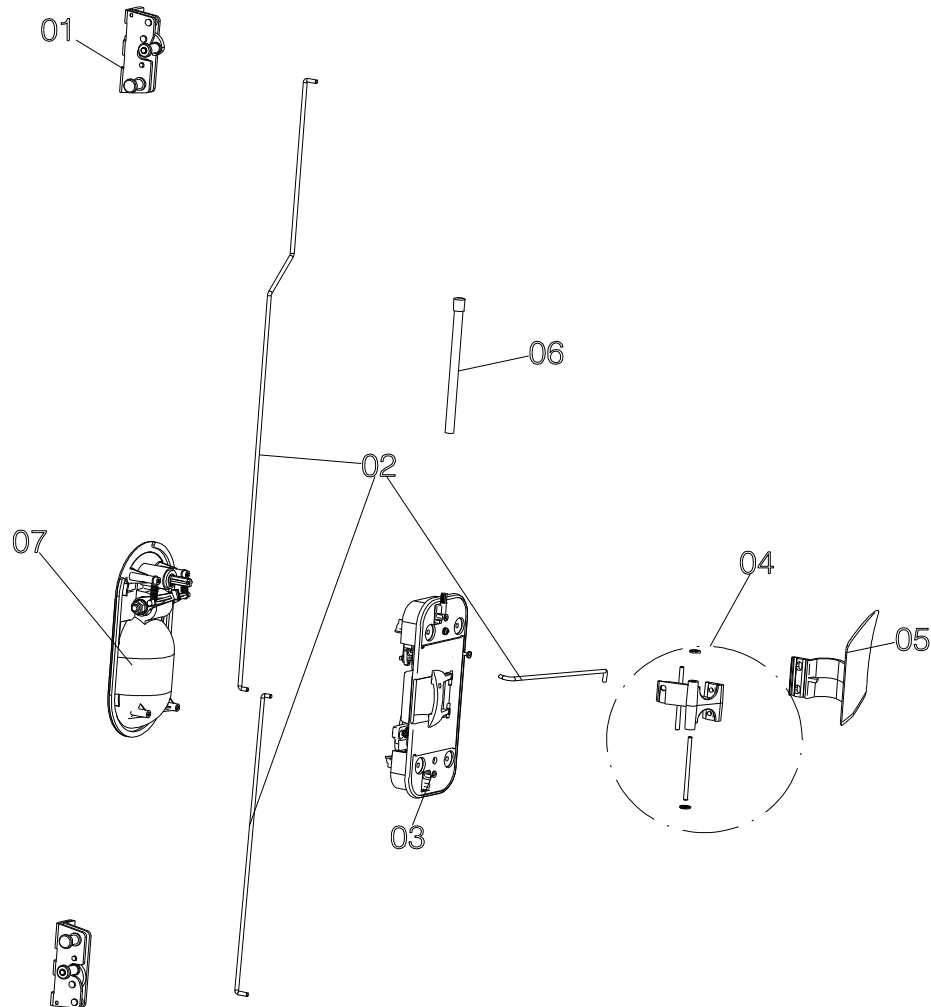


* = only for manufacturers

68.7. Drivers Cabin Entr. Door CaraD-I100plus - Spare Parts Locking System

	Description	Part No.	Pack unit
01	Lock, top and bottom	BG 1633	1 set
02	Linkage	BG 1634	1 set
03	Lock mechanism	BG 1635	1 pc.
04	Lever (interior use) with shaft	BG 1636	1 pc.
05	Interior handle	BG 1637	1 pc.
06	Locking button	BG 1638	1 pc.
07	Exterior handle	BG 1639	1 pc.

Important: When ordering specify - description, quantity, wall thickness, colour and aperture size of door.

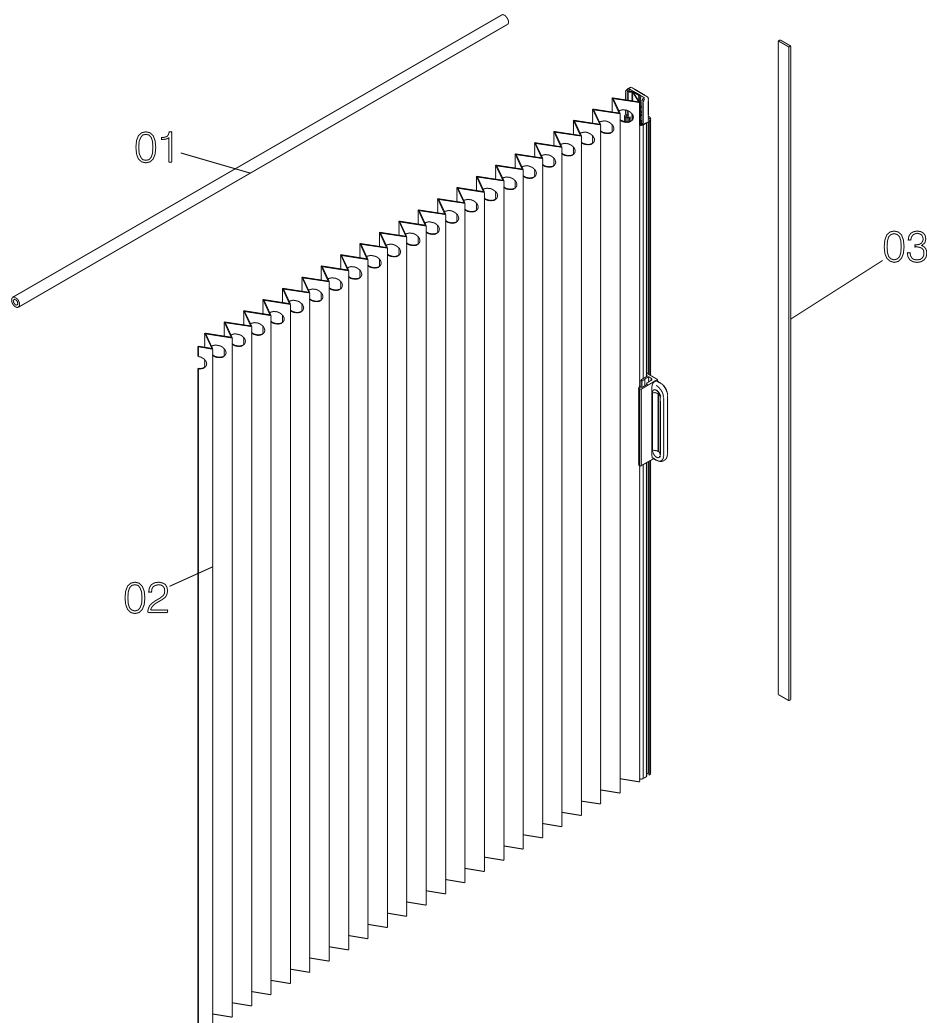


* = only for manufacturers

68.8. Drivers Cabin Entr. Door CaraD-I100plus - Spare Parts Darkening System

	Description	Part No.	Pack unit
01	Guide tube with assembly parts	BG 1613	1 pc.
02	Blackout with end rod	BG 1614	1 pc
03	Magnetic strip	BG 1615	1 pc

Important: When ordering specify – description, quantity, wall thickness, colour and aperture size of door.

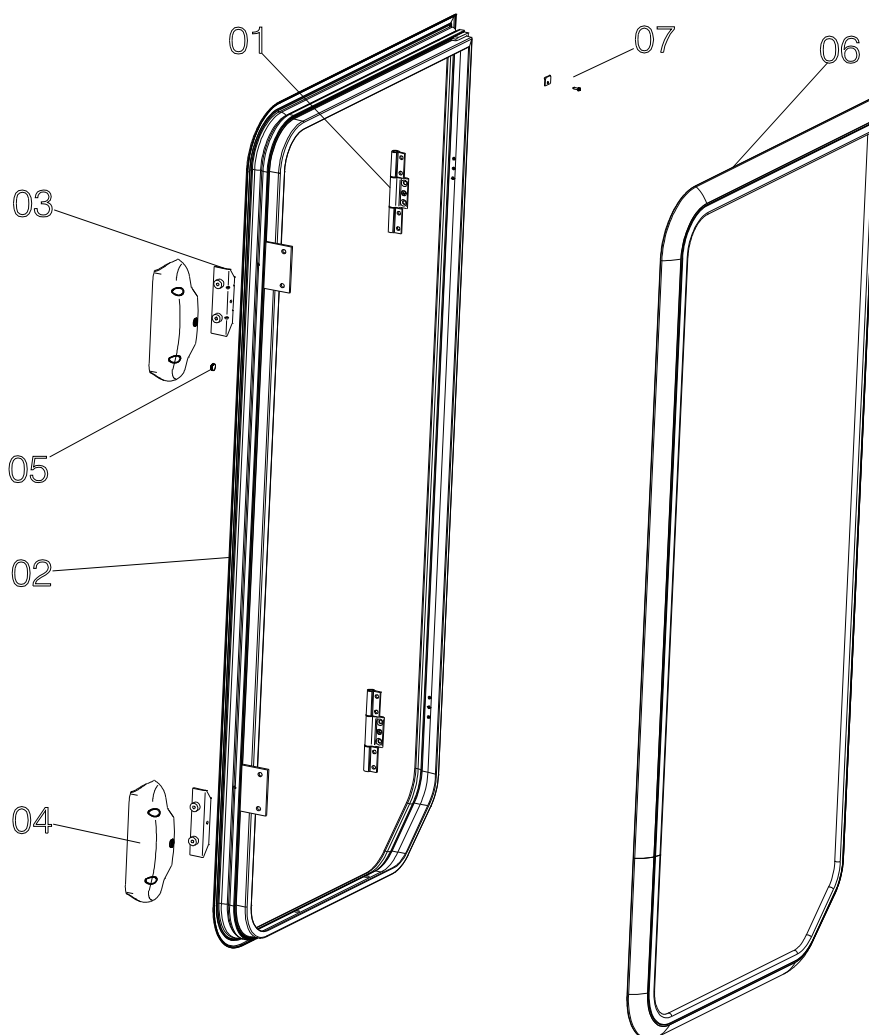


* = only for manufacturers

68.9. Drivers Cabin Entr. Door CaraD-I100plus - Spare Parts Exterior Frame

	Description	Part No.	Pack unit
01	Hinge, top and bottom	BG 1607	1 set
02	Exterior frame without assembly parts	BG 1608	1 pc
03	Lock counterpart	BG 1609	1 set
04	Cover for lock counterpart with fixings	BG 1610	1 set
05	Cover caps	BG 1611	4 pc
06	Interior cover	BG 1612	1 pc
07	Fixing clamps with screws for wall thickness 28/29 mm	ZB 1082	1 set
	Fixing clamps with screws for wall thickness 30/31 mm	ZB 1080	1 set

Important: When ordering specify – description, quantity, wall thickness, colour and aperture size of door.



* = only for manufacturers