

N3000 series

(last produced 05 2019)

spare part list

N3080

Front	2
Controls	30
Back	40

N3090

Front	4
Controls	32
Back	40

N3097

Front	6
Controls	34
Back	40

N3100

Front	8
Controls	32
Back	42

N3104

Front	10
Controls	34
Back	42

N3108

Front	12
Controls	32
Back	40

N3112

Front	14
Controls	34
Back	40

N3115

Front	16
Controls	36
Back	40

N3141

Front	18
Controls	38
Back	44

N3142

Front	20
Controls	38
Back	44

N3145

Front	22
Controls	32
Back	46

N3150

Front	24
Controls	34
Back	46

N3170

Front	26
Controls	32
Back	46

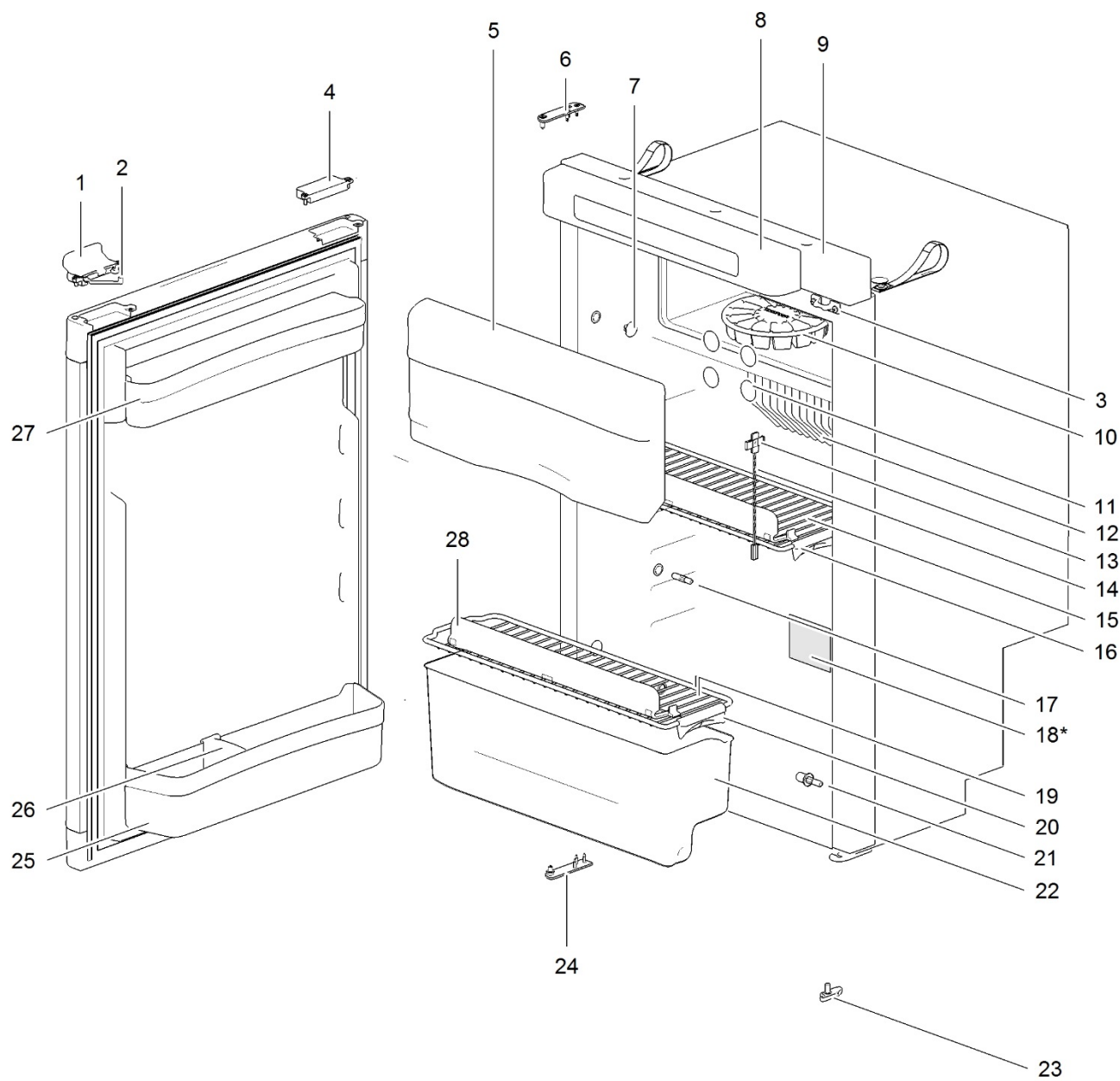
N3175

Front	28
Controls	34
Back	46



		Spare part number	Spare part number	Colours available
1	Latch		626985	27
2	Storage strap (2x)	626986		27
3	Strike plate			
4	Pocket cover			
5	Freezer door		623036	08
	Hinge freezer door (2x)	624680		08
6	Hinge plate			
7	Cap (2x)	623622		08
8	Control panel	Refer to page 38		
9	Mounting box			
10	Ice cube tray			
11	Cap freezer bolt (12x)	624479		08
12	Fin			
13	Fin clip		623077	
14	Thermistor			
15	Shelf 416 x 176	690800		08
16	Clip shelf small	623626		08
17	Hinge pin			
18	Identification label *			
19	Shelf 416 x 130	690801		08
20	Clip shelf small	623626		08
21	Hinge pin			
22	Vegetable bin	690802		08
23	Latch bottom	624001		27
24	Hinge plate			
25	Door bin flat wide	690804		08
26	Bottle retainer	626989		12
27	Door bin flat shallow	690803		08
28	Shelf food retainer	691188		08

* With a request for information or service, always provide the serial number of the refrigerator. The serial number is the code below the barcode on the identification label.

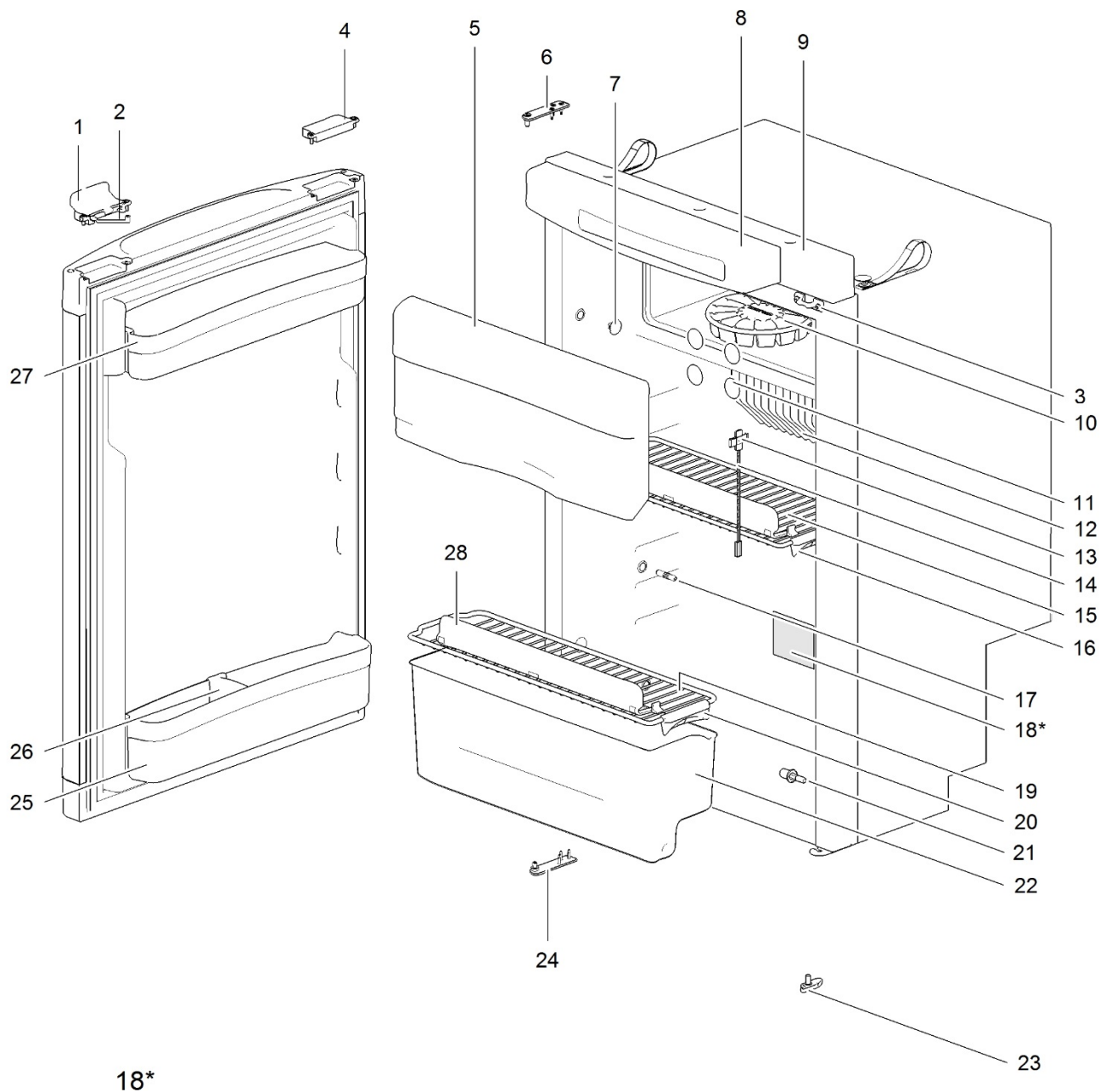


18*



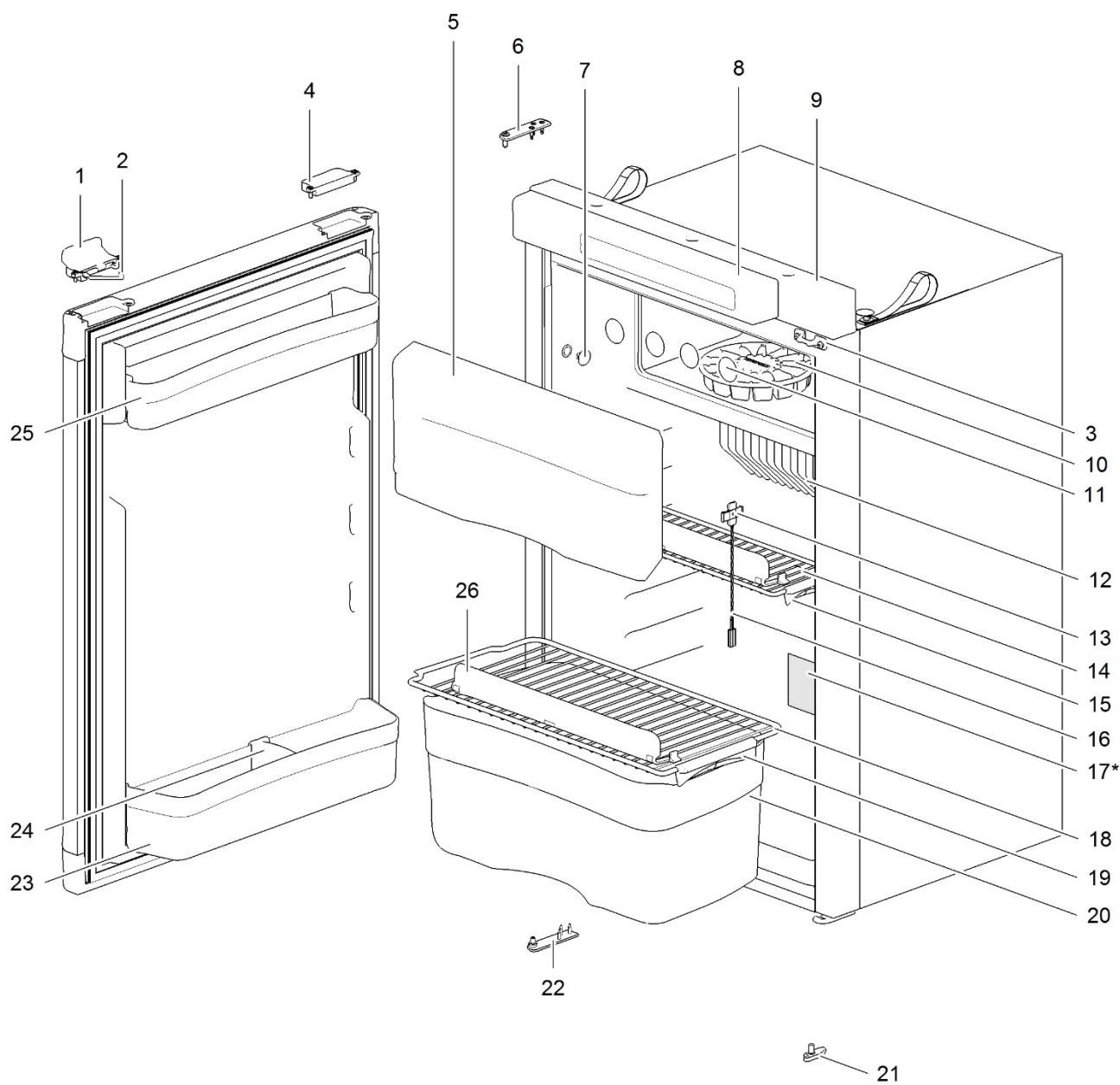
		Spare part number	Spare part number	Spare part number	Colours available
1	Latch		626985		
2	Storage strap (2x)	626986	colours available: 27	691468 ≥ 31-06-2016 (E151T.....)	27
3	Strike plate				
4	Pocket cover				
5	Freezer door		690852		
	Hinge freezer door (2x)	624680			08
6	Hinge plate				
7	Cap (2x)	623622			08
8	Control panel	<i>Refer to page 40</i>			
9	Mounting box				
10	Ice cube tray				
11	Cap freezer bolt (12x)	624479			08
12	Fin				
13	Fin clip			623077	
14	Thermistor				
15	Shelf 455 x 179	690814			08
16	Clip shelf small	623626			08
17	Hinge pin				
18	Identification label *				
19	Shelf 455 x 133	690815			08
20	Clip shelf small	623626			08
21	Hinge pin				
22	Vegetable bin	690816			08
23	Latch bottom	624001			27
24	Hinge plate				
25	Door bin flat wide	690818			08
26	Bottle retainer	626989			12
27	Door bin flat shallow	690817			08
28	Shelf food retainer	691188			08

* With a request for information or service, always provide the serial number of the refrigerator. The serial number is the code below the barcode on the identification label.



	Spare part number	Spare part number	Spare part number	Colours available
1	Latch	626985 colours available: 27	691739 ≥ 24-04-2018 (E114V.....)	27
2	Storage strap (2x)			
3	Strike plate			
4	Pocket cover	690852		08
5	Freezer door			
	Hinge freezer door (2x)	624680		
6	Hinge plate			
7	Cap (2x)	623622		08
8	Control panel	Refer to page 42		
9	Mounting box			
10	Ice cube tray			
11	Cap freezer bolt (12x)	624479		08
12	Fin			
13	Fin clip		623077	
14	Thermistor			
15	Shelf 455 x 179	690814		08
16	Clip shelf small	623626		08
17	Hinge pin			
18	Identification label *			
19	Shelf 455 x 133	690815		08
20	Clip shelf small	623626		08
21	Hinge pin			
22	Vegetable bin	690816		08
23	Latch bottom	624001		27
24	Hinge plate			
25	Door bin flat wide	690824		08
26	Bottle retainer	626989		12
27	Door bin flat shallow	690823		08
28	Shelf food retainer	691188		08

* With a request for information or service, always provide the serial number of the refrigerator. The serial number is the code below the barcode on the identification label.

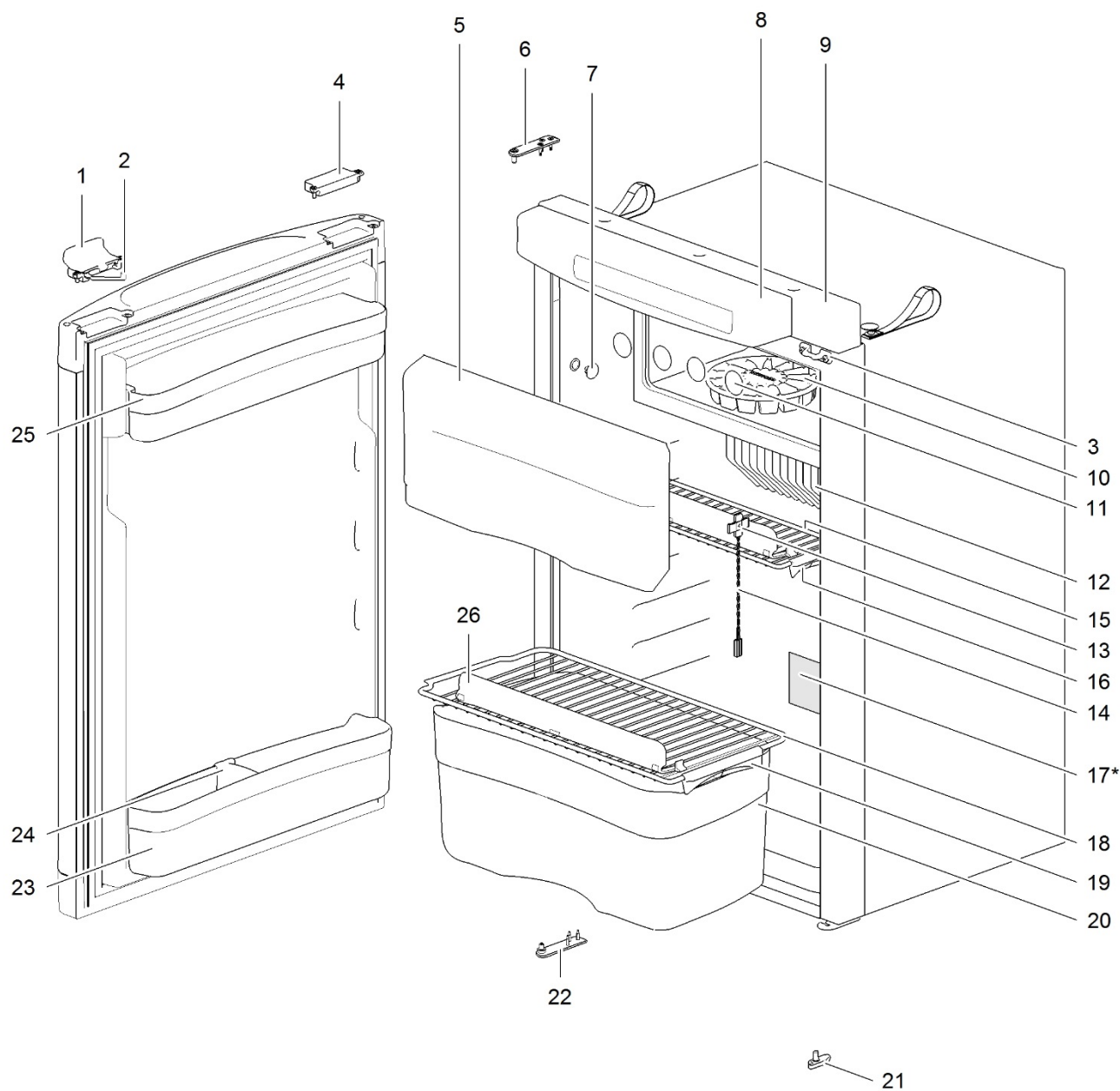


17*

Model No	Type	C14	CE
Serie No	Climate Class	SN	R603
Temperature: -20°C to +70°C / -10°F to +158°F		320132	
Gross Volume Brutto Volumen Volume Brat Volumen Brutto	108 L		
Netto Volume Nettovolumen Volume Net Volumen Netto	1050031-38-30027 white 1050P C20021-5 50 ml		
Bar Code	 EP3N1000611		
Part Number Teilnummer Number Nummer	T102		
CE 0883 EN32427	Part No.	E34027	
Absorbent	NH ₂ = 054.8 g	HACR6A = 50.1 g	p value = 21 hat
LFC: HCF, FREE (FCKW, FKW FRE)		H2O2_Sanit/10g_EUR	

		Spare part number	Spare part number	Spare part number	Colours available
1	Latch		626985 colours available: 27	691468 ≥ 31-06-2016 (E151T.....)	27
2	Storage strap (2x)	626986			
3	Strike plate				
4	Pocket cover				
5	Freezer door		690852		
	Hinge freezer door (2x)	624680			08
6	Hinge plate				
7	Cap (2x)	623622			08
8	Control panel	<i>Refer to page 40</i>			
9	Mounting box				
10	Ice cube tray				
11	Cap freezer bolt (12x)	624479			08
12	Fin				
13	Fin clip			623077	
16	Thermistor				
14	Shelf 455 x 133	690815			08
15	Clip shelf small	623626			08
17	Identification label *				
18	Shelf 454 x 220	690828			08
19	Clip shelf large	623625			08
20	Vegetable bin	690829			08
21	Latch bottom	624001			27
22	Hinge plate				
23	Door bin flat wide	690818			08
24	Bottle retainer	626989			12
25	Door bin flat shallow	690817			08
26	Shelf food retainer	691188			08

* With a request for information or service, always provide the serial number of the refrigerator. The serial number is the code below the barcode on the identification label.

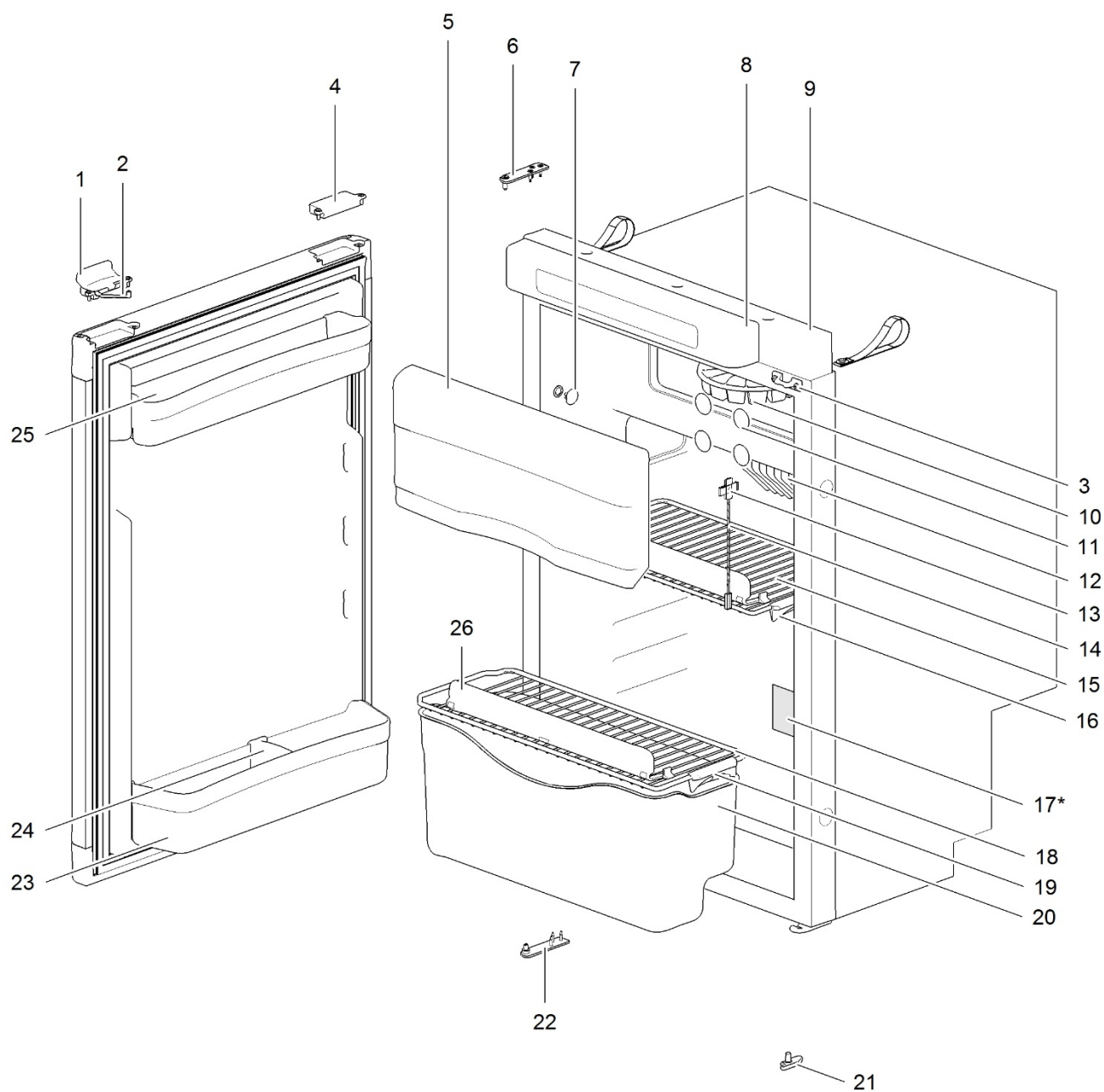


17*

[illegible]

		Spare part number	Spare part number	Spare part number	Colours available
1	Latch		626985 colours available: 27	691739 ≥ 24-04-2018 (E114V.....)	27
2	Storage strap (2x)	626986			
3	Strike plate				
4	Pocket cover				
5	Freezer door		690852		08
	Hinge freezer door (2x)	624680			
6	Hinge plate				
7	Cap (2x)	623622			08
8	Control panel	<i>Refer to page 42</i>			
9	Mounting box				
10	Ice cube tray				
11	Cap freezer bolt (12x)	624479			08
12	Fin				
13	Fin clip		623077		
14	Thermistor				
15	Shelf 455 x 133	690815			08
16	Clip shelf small	623626			08
17	Identification label *				
18	Shelf 454 x 220	690828			08
19	Clip shelf large	623625			08
20	Vegetable bin	690829			08
21	Latch bottom	624001			27
22	Hinge plate				
23	Door bin curved wide	690824			08
24	Bottle retainer	626989			12
25	Door bin curved shallow	690823			08
26	Shelf food retainer	691188			08

* With a request for information or service, always provide the serial number of the refrigerator. The serial number is the code below the barcode on the identification label.



17*

Model No _____ **Type** **C11** **CE**
Series No _____ **Climate Class** **SN**

Rated Voltage 230 V AC **Rated Power** 140 W **Weight** 130113

Inside Volume _____
Outside Volume _____
Volume Inlet _____
Volume Outlet _____

Inside Volume _____ **030521-26-2027** **valve**
Outside Volume _____
Volume Inlet _____ **(SNP C30521) 30 ml/hr**
Volume Outlet _____

Net Weight _____
Gross Weight _____
Net Volume _____
Gross Volume _____

CE 0953 BNC357 **Part No** **S34057**

Absorbent **N50** **154.8 g** **NAC20A** **10.1 g** **g/min** **21 hat**

CFPS **NO FREE / FLOW** **CFW** **FREE** **030519**
NO3 **Second stage** **EUR**

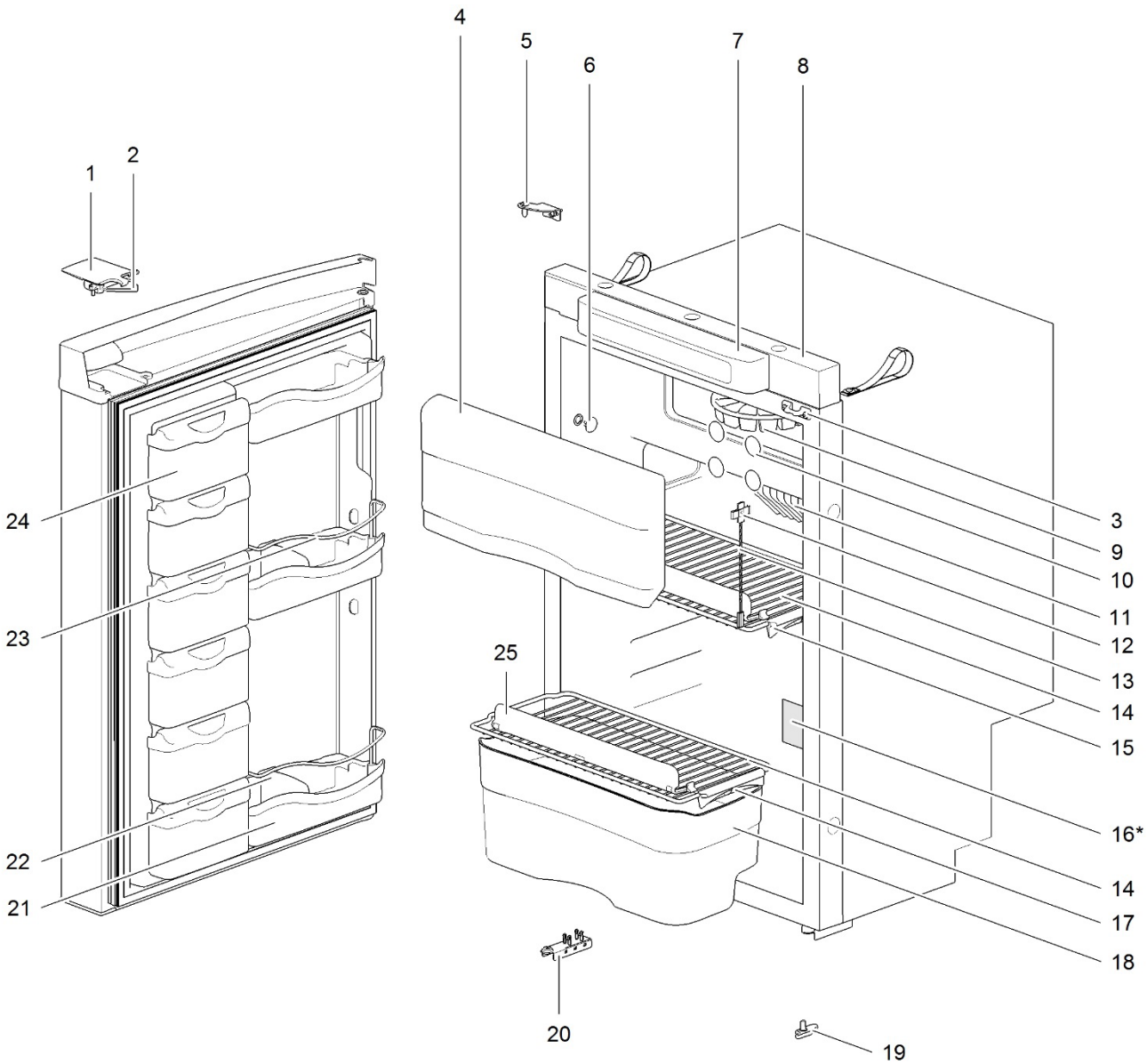
		Spare part number	Spare part number	Spare part number	Colours available
1	Latch		626985 colours available: 27	691468 ≥ 31-06-2016 (E151T.....)	27
2	Storage strap (2x)	626986			
3	Strike plate				
4	Pocket cover				
5	Freezer door		690852		08
	Hinge freezer door (2x)	624680			
6	Hinge plate				
7	Cap (2x)	623622			08
8	Control panel	<i>Refer to page 40</i>			
9	Mounting box				
10	Ice cube tray				
11	Cap freezer bolt (12x)	624479			08
12	Fin				
13	Fin clip			623077	
14	Thermistor				
15	Shelf 454 x 205	690831			08
16	Clip shelf large	623625			08
17	Identification label *				
18	Shelf 455 x 174	690832			08
19	Clip shelf small	623626			08
20	Vegetable bin	690833			08
21	Latch bottom	624000			27
22	Hinge plate				
23	Door bin flat wide	690818			08
24	Bottle retainer	626989			12
25	Door bin flat shallow	690817			08
26	Shelf food retainer	691188			08

* With a request for information or service, always provide the serial number of the refrigerator. The serial number is the code below the barcode on the identification label.



		Spare part number	Spare part number	Spare part number	Colours available
1	Latch		626985 colours available: 27	691739 ≥ 24-04-2018 (E114V.....)	27
2	Storage strap (2x)	626986			
3	Strike plate				
4	Pocket cover				
5	Freezer door		690852		08
	Hinge freezer door (2x)	624680			
6	Hinge plate				
7	Cap (2x)	623622			08
8	Control panel LED	<i>Refer to page 42</i>			
9	Mounting box				
10	Ice cube tray				
11	Cap freezer bolt (12x)	624479			08
12	Fin				
13	Fin clip		623077		
14	Thermistor				
15	Shelf 454 x 205	690831			08
16	Clip shelf large	623625			08
17	Identification label *				
18	Clip shelf large	623625			08
19	Vegetable bin	690834			08
20	Latch bottom	624001			27
21	Hinge plate				
22	Door bin curved wide	690824			08
23	Bottle retainer	626989			12
24	Door bin curved shallow	690823			08
25	Shelf food retainer	691188			08

* With a request for information or service, always provide the serial number of the refrigerator. The serial number is the code below the barcode on the identification label.



16*

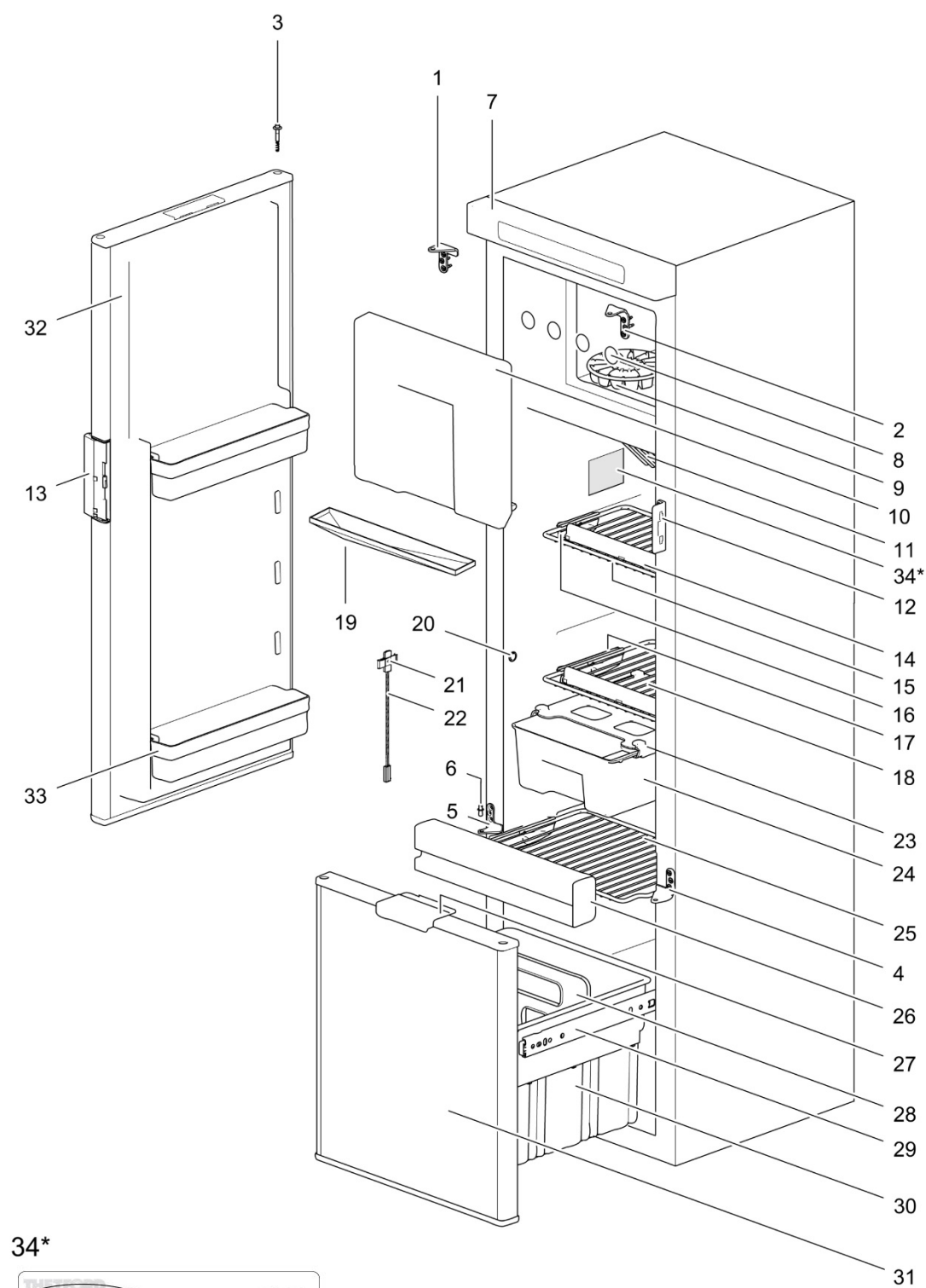


LE993_N3115-Front_1015-V04

		Spare part number	Spare part number	Colours available
1	Latch		629744	90
2	Storage strap (2x)	626986		27
3	Strike plate			
4	Freezer door		690852	
	Hinge freezer door (2x)	624680		08
5	Hinge plate			
6	Cap (2x)	623622		08
7	Control panel	Refer to page 44		
8	Mounting box			
9	Ice cube tray			
10	Cap freezer bolt (12x)	624479		08
11	Fin			
12	Fin clip		623077	
13	Thermistor			
14	Shelf 454 x 205	690831		08
15	Clip shelf large	623625		08
16	Identification label *			
17	Clip shelf large	623625		08
18	Vegetable bin	690834		08
19	Latch bottom	629721		
20	Hinge plate			
21	Door bin	629745		12
22	Bottle retainer	626989		12
23	Rail			
24	Door bin small	629747		12
25	Shelf food retainer	691188		08

* With a request for information or service, always provide the serial number of the refrigerator. The serial number is the code below the barcode on the identification label.

xxxxxx = not available anymore

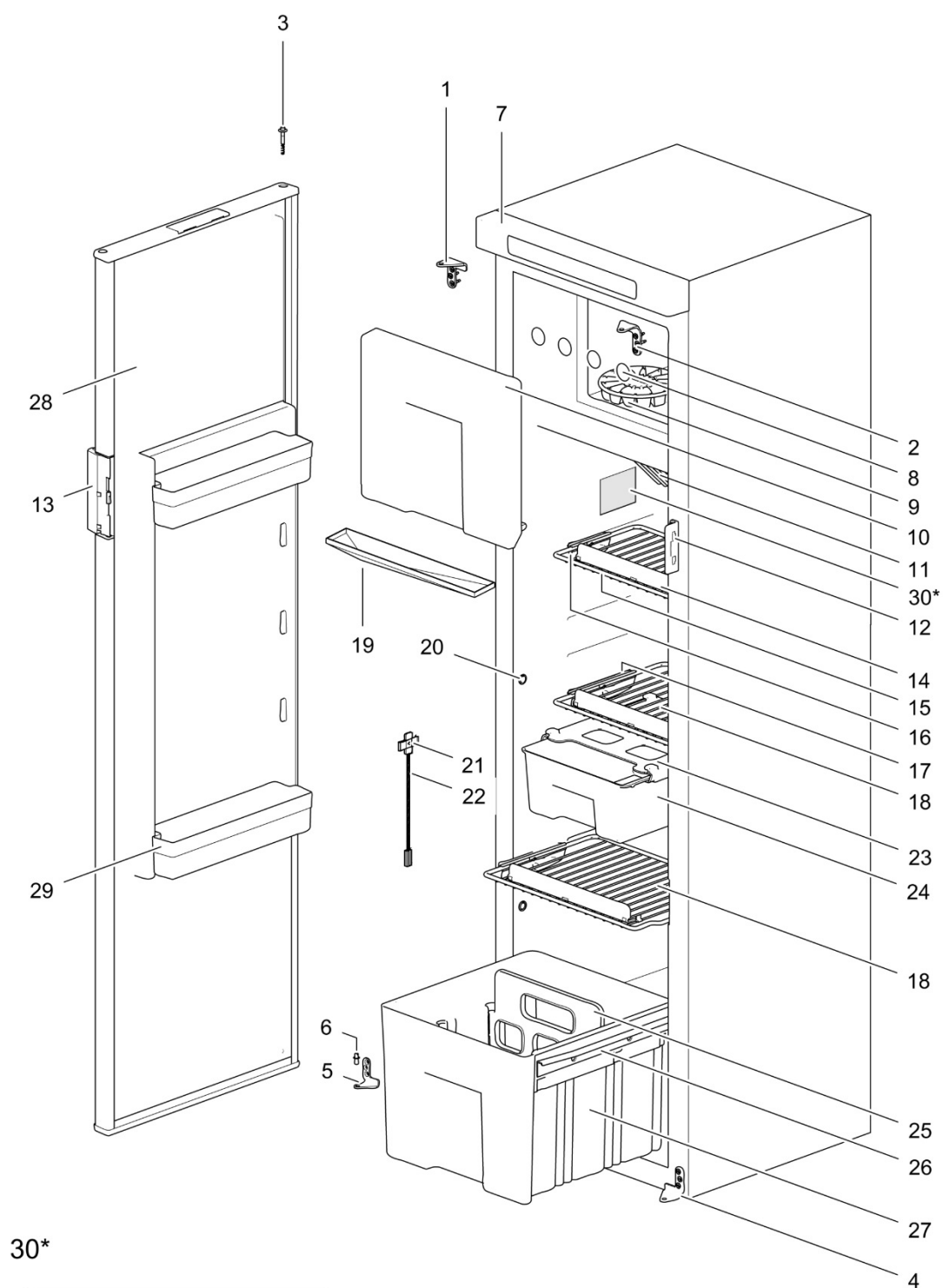


34*

[illegible]

		Spare part number	Spare part number	Colours available
1	Hinge plate top left	691111 < 01-05-2015	691456 ≥ 01-05-2015	27
2	Hinge plate top right			
3	Hinge pin (including spring)			
4	Hinge plate bottom right			
5	Hinge plate bottom left			
6	Hinge pin bottom			
7	Control panel	Refer to page 46		
8	Cap freezer bolt (12x)	624479		08
9	Ice cube tray			
10	Freezer door		691112	
	Hinge freezer door (2x)	624680		08
11	Fin			
12	Door lock plate		691113	
13	Door handle			
14	Shelf food retainer	691114		08
15	Shelf 340 x 182	691115		08
16	Clip shelf small	623626		08
17	Clip shelf large	623625		08
18	Shelf 340 x 241	691116		08
19	Drip tray	691885		08
20	Cap (2x)	623622		08
21	Fin clip		623077	
22	Thermistor			
23	Guiding cover	691118		08
24	Slide-out box	691119		08, 12
25	Shelf 340 x 268	691117		08
26	Divider bar			
27	Drawer handle	691287		27
28	Drawer divider	691120		12
29	Drawer guides	691123		
30	Drawer bin	691288		08
31	Drawer door	690521		27R
32	Cabinet door	690519		27R
33	Door bin	691121		08, 12
34	Identification label*			
NA	Clip - door conversion (2x)	691127		

* With a request for information or service, always provide the serial number of the refrigerator. The serial number is the code below the barcode on the identification label.

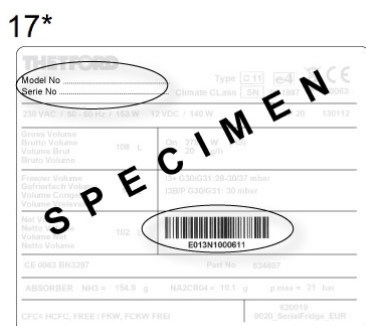
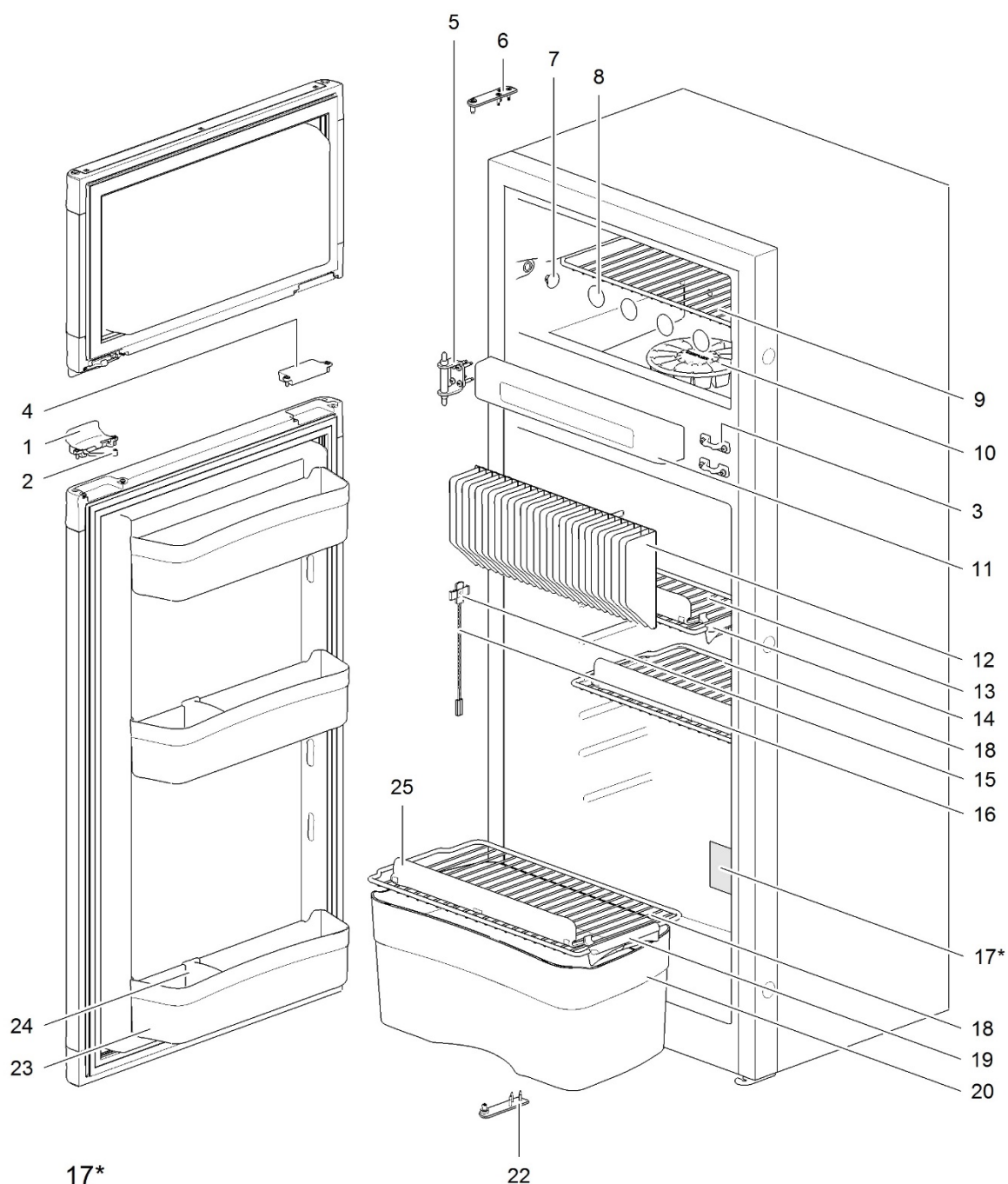


30*

[illegible]

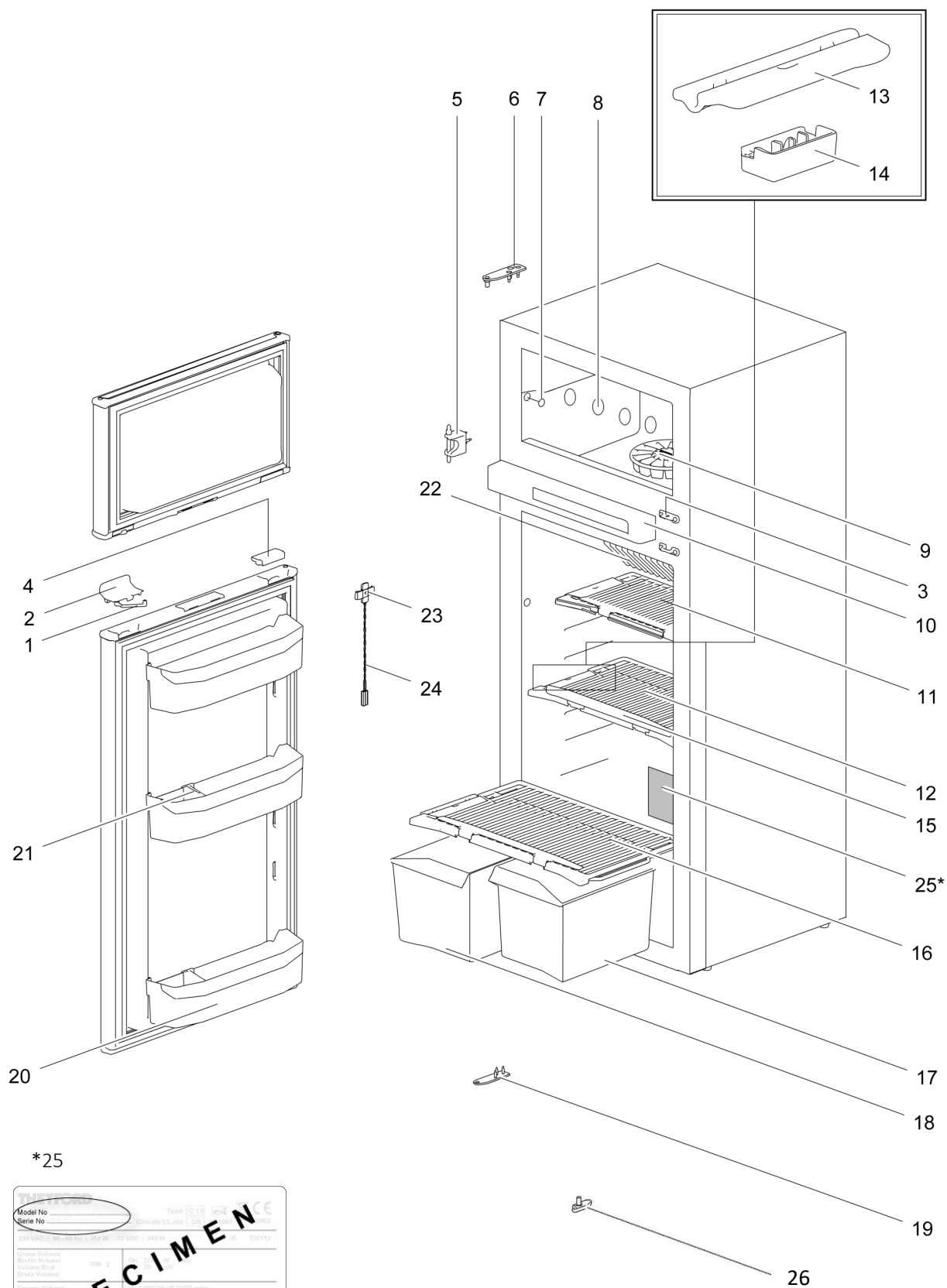
		Spare part number	Spare part number	Colours available
1	Hinge plate left	691111 < 01-05-2015	691456 ≥ 01-05-2015	27
2	Hinge plate right			
3	Hinge pin (including spring)			
4	Hinge plate bottom right			
5	Hinge plate bottom left			
6	Hinge pin bottom			
7	Control panel	Refer to page 46		
8	Cap freezer bolt (12x)	624479		08
9	Ice cube tray			
10	Freezer door	624680	691112	08
	Hinge freezer door (2x)			
11	Fin			
12	Door lock plate		691113	
13	Door handle			
14	Shelf food retainer	691114		08
15	Shelf 340 x 182	691115		08
16	Clip shelf small	623626		08
17	Clip shelf large	623625		08
18	Shelf 340 x 241	691116		08
19	Drip tray	691885		08
20	Cap (2x)	623622		08
21	Fin clip		623077	
22	Thermistor			
23	Guiding cover	691118		08
24	Slide-out box	691119		08, 12
25	Drawer divider	691120		12
26	Drawer guides	691122		
27	Drawer bin	691457		08
28	Cabinet door	690517		27R
29	Door bin	691121		08, 12
30	Identification label*			
NA	Clip - door conversion (2x)	691127		

* With a request for information or service, always provide the serial number of the refrigerator. The serial number is the code below the barcode on the identification label.



		Spare part number	Spare part number	Spare part number	Colours available
1	Latch		626985 colours available: 27	691468 ≥ 31-06-2016 (E151T.....)	27
2	Storage strap (2x)	626986			
3	Strike plate				
4	Pocket cover				
5	Hinge center				
6	Hinge plate				
7	Cap (2x)	623622			08
8	Cap freezer bolt (12x)	624479			08
9	Shelf freezer 405 x 188.5	690836			08
10	Ice cube tray				
11	Control panel	<i>Refer to page 40</i>			
12	Fin				
13	Shelf 428.5 x 158	690837			08
14	Clip shelf small	623626			08
15	Fin clip			623077	
16	Thermistor				
17	Identification label *				
18	Shelf 427.5 x 218.3	690838			08
19	Clip shelf large	623625			08
20	Vegetable bin	690829			08
21	Latch bottom	624001			27
22	Hinge plate				
23	Door bin flat wide	690804			08
24	Bottle retainer	626989			12
25	Shelf food retainer	691188			08

* With a request for information or service, always provide the serial number of the refrigerator. The serial number is the code below the barcode on the identification label.



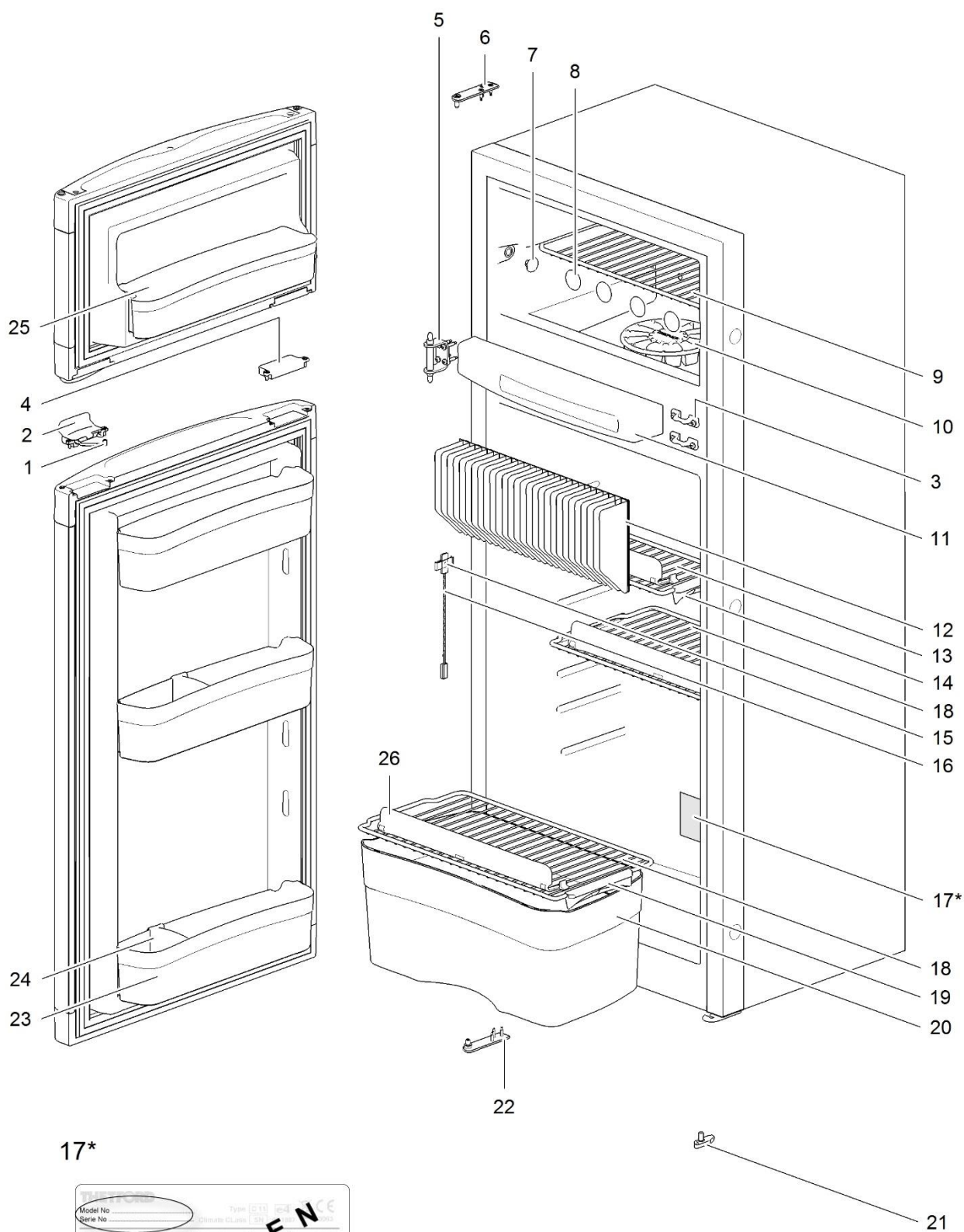
*25



N3145-front_0718-V04

		Spare part number	Spare part number	Spare part number	Colours available
1	Storage strap (2x)	626986	626985 colours available: 27	691468 ≥ 31-06-2016 (E151T.....)	27
2	Latch				
3	Strike plate				
4	Pocket cover				
5	Hinge center				
6	Hinge plate				08
7	Cap (2x)	623622			08
8	Cap freezer bolt (12x)	624479			08
9	Ice cube tray				
10	Control panel	Refer to page 40			
11	Shelf rack 415 x 150	692510			144
12	Shelf rack 415 x 200	692511			144
13	Clip shelf rack small	692513			08
14	Clip rack safety lock	692515			08
15	Food retainer	692516			08
16	Shelf rack 415 x 200	692511			144
17	Vegetable bin right	692523			144
18	Vegetable bin left	692522			144
19	Hinge Plate				
20	Door bin flat	692519			144
21	Bottle retainer	692521			08
22	Fin				
23	Fin clip (3x)			623077	
24	Thermistor				
25*	Identification label				
26	Bottom latch	624001			27

* With a request for information or service, always provide the serial number of the refrigerator. The serial number is the code below the barcode on the identification label.



TEUFELHAUPT

Model No. Type SC 13 104 CE

Serial No. Climate Class SN

230 VAC 50 Hz 100-120 V 150 W 140 W 150 W 150 W

Green Volume L

White Volume L

Volume Class

Energy Indicator

Compressor No.

Volume Comp.

Year

Month

Volume Class

Volume Indicator

CE 0012 000007 Part No.

ABSORBER NO. g NAC104 g max g

CECH NO. FREE / FROST FREE

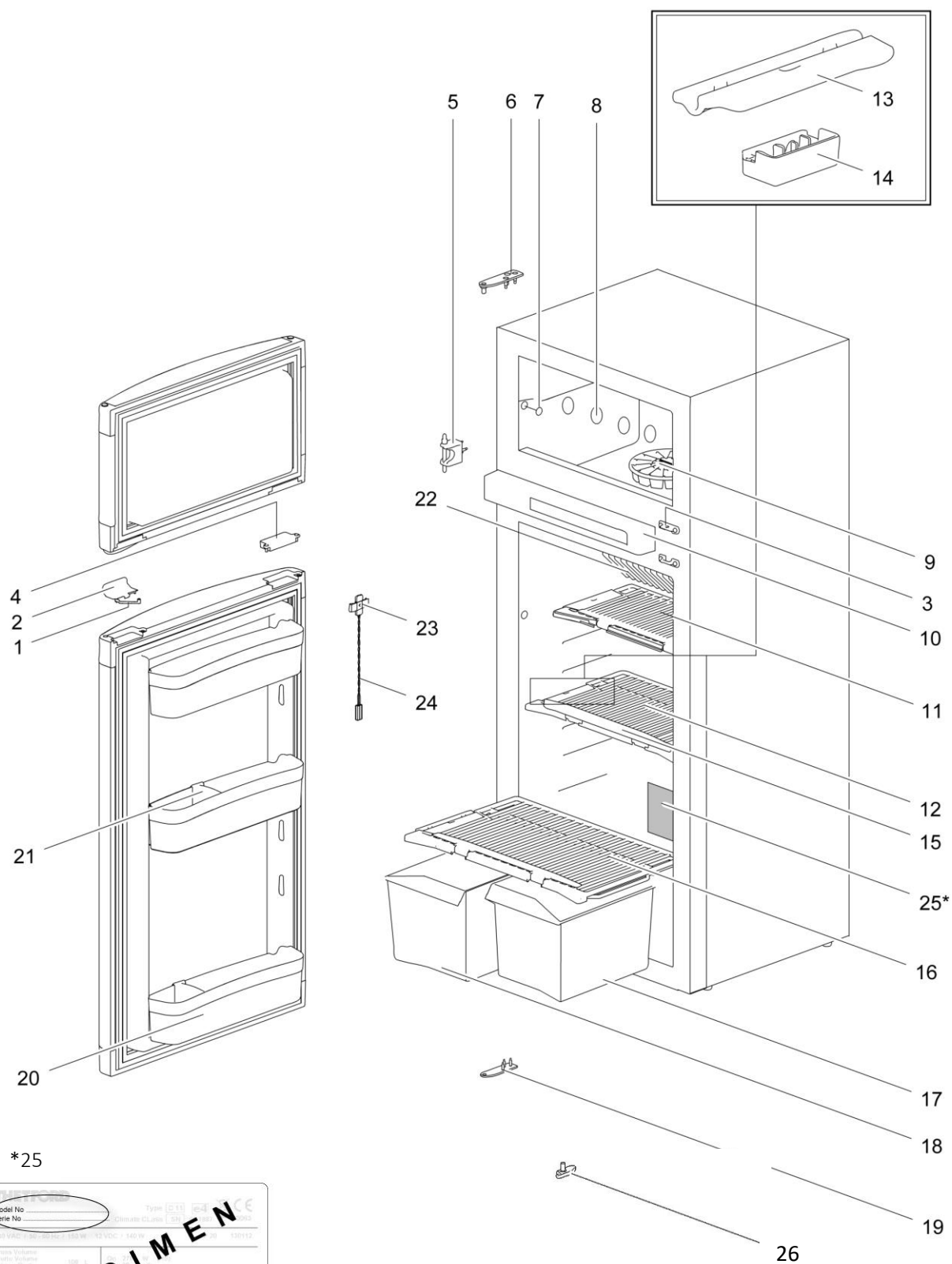
0020, Serial No.

SPECIMEN

013N1000611

		Spare part number	Spare part number	Spare part number	Colours available
1	Storage strap (2x)	626986	626985 colours available: 27	691739 ≥ 24-04-2018 (E114V.....)	27
2	Latch				
3	Strike plate				
4	Pocket cover				
5	Hinge center				
6	Hinge plate				
7	Cap (2x)	623622			08
8	Cap freezer bolt (12x)	624479			08
9	Shelf freezer 405 x 188.5	690836			08
10	Ice cube tray				
11	Control panel	<i>Refer to page 42</i>			
12	Fin				
13	Shelf 428.5 x 158	690837			08
14	Clip shelf small	623626			08
15	Fin clip			623077	
16	Thermistor				
17	Identification label *				
18	Shelf 427.5 x 218.3	690838			08
19	Clip shelf large	623625			08
20	Vegetable bin	690829			08
21	Latch bottom	624001			27
22	Hinge plate				
23	Door bin	690842			08
	Door bin	626977			12
24	Bottle retainer	626989			12
25	Door bin curved shallow	690841			08
26	Shelf food retainer	691188			08

* With a request for information or service, always provide the serial number of the refrigerator. The serial number is the code below the barcode on the identification label.



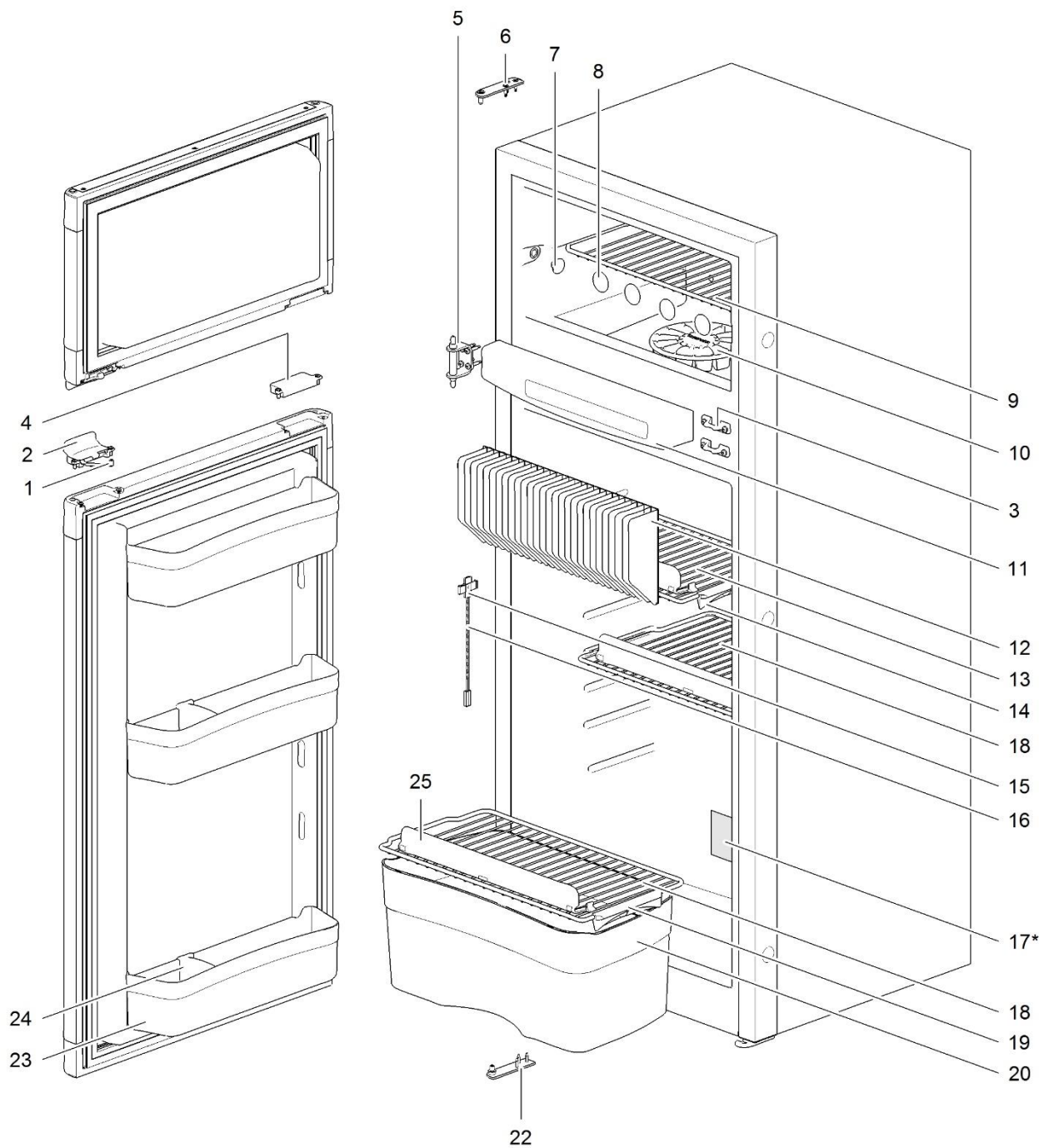
*25



N3150-front_0718-V04

		Spare part number	Spare part number	Spare part number	Colours available
1	Storage strap (2x)	626986	626985 colours available: 27	691739 ≥ 24-04-2018 (E114V.....)	27
2	Latch				
3	Strike plate				
4	Pocket cover				
5	Hinge center				
6	Hinge plate				08
7	Cap (2x)	623622			08
8	Cap freezer bolt (12x)	624479			08
9	Ice cube tray				
10	Control panel	<i>Refer to page 42</i>			
11	Shelf rack 415 x 150	692510			144
12	Shelf rack 415 x 200	692511			144
13	Clip shelf rack small	692513			08
14	Clip rack safety lock	692515			08
15	Food retainer	692516			08
16	Shelf rack 415 x 200	692511			144
17	Vegetable bin right	692523			144
18	Vegetable bin left	692522			144
19	Hinge Plate				
20	Door bin curved	692520			144
21	Bottle retainer	692521			08
22	Fin				
23	Fin clip (3x)			623077	
24	Thermistor				
25*	Identification label				
26	Bottom latch	624001			27

* With a request for information or service, always provide the serial number of the refrigerator. The serial number is the code below the barcode on the identification label.



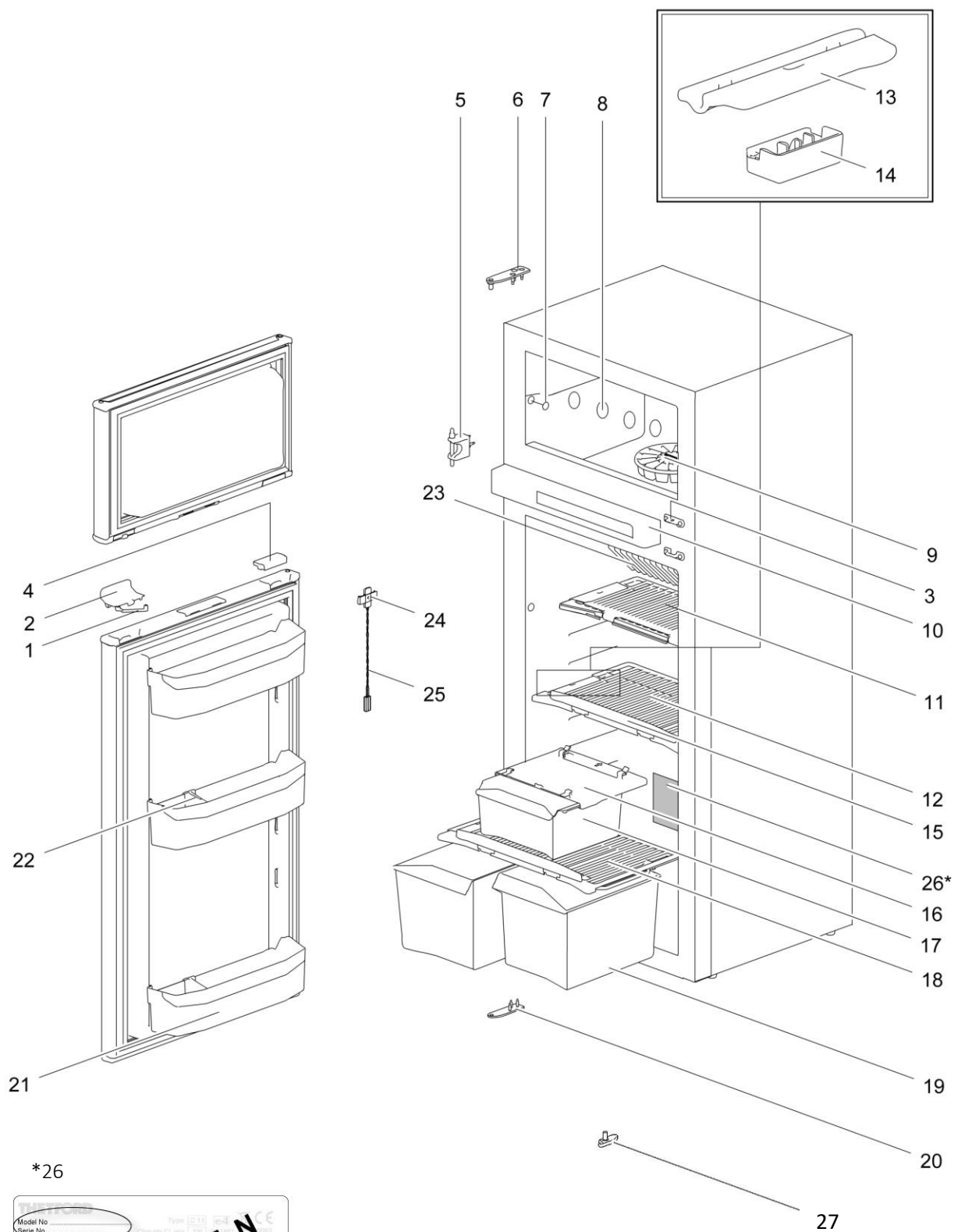
17*

TUFTCOOL	
Model No	Type
Series No	Climate Class
230 VAC / 50 Hz / 100 W / 100 W / 100 W / 100 W	
Net Volume	100 L
Gross Volume	100 L
Net Weight	100 kg
Gross Weight	100 kg
Energy Efficiency Class	A
Energy Consumption (kWh/year)	100
CO ₂ Emissions (kg/year)	100
Barcode	E013N1000611
CE	0001
ABSORBER	100 g
HAZCHG	100 g
g max	21 kg
OPEN HOPPER FREE / FRESH FRESH FREE	
R20019	
R20019	

LE1063_N3170-front_1015-V03

		Spare part number	Spare part number	Spare part number	Colours available
1	Storage strap (2x)	626986	626985 colours available 27	691468 ≥ 31-06-2016 (E151T.....)	27
2	Latch				
3	Strike plate				
4	Pocket cover				
5	Hinge center				
6	Hinge plate				
7	Cap (2x)	623622			08
8	Cap freezer bolt (12x)	624479			08
9	Shelf freezer 404 x 238.5	690843			08
10	Ice cube tray				
11	Control panel	<i>Refer to page 40</i>			
12	Fin				
13	Shelf 428.4 x 232.3	690844			08
14	Clip shelf large	623625			08
15	Fin clip			623077	
16	Thermistor				
17	Identification label *				
18	Shelf 428.4 x 282.3	690845			08
19	Clip shelf large	623625			08
20	Vegetable bin	690829			08
21	Latch bottom	624001			27
22	Hinge plate				
23	Door bin flat wide	690804			08
24	Bottle retainer	626989			12
25	Shelf food retainer	691188			08

* With a request for information or service, always provide the serial number of the refrigerator. The serial number is the code below the barcode on the identification label.



*26



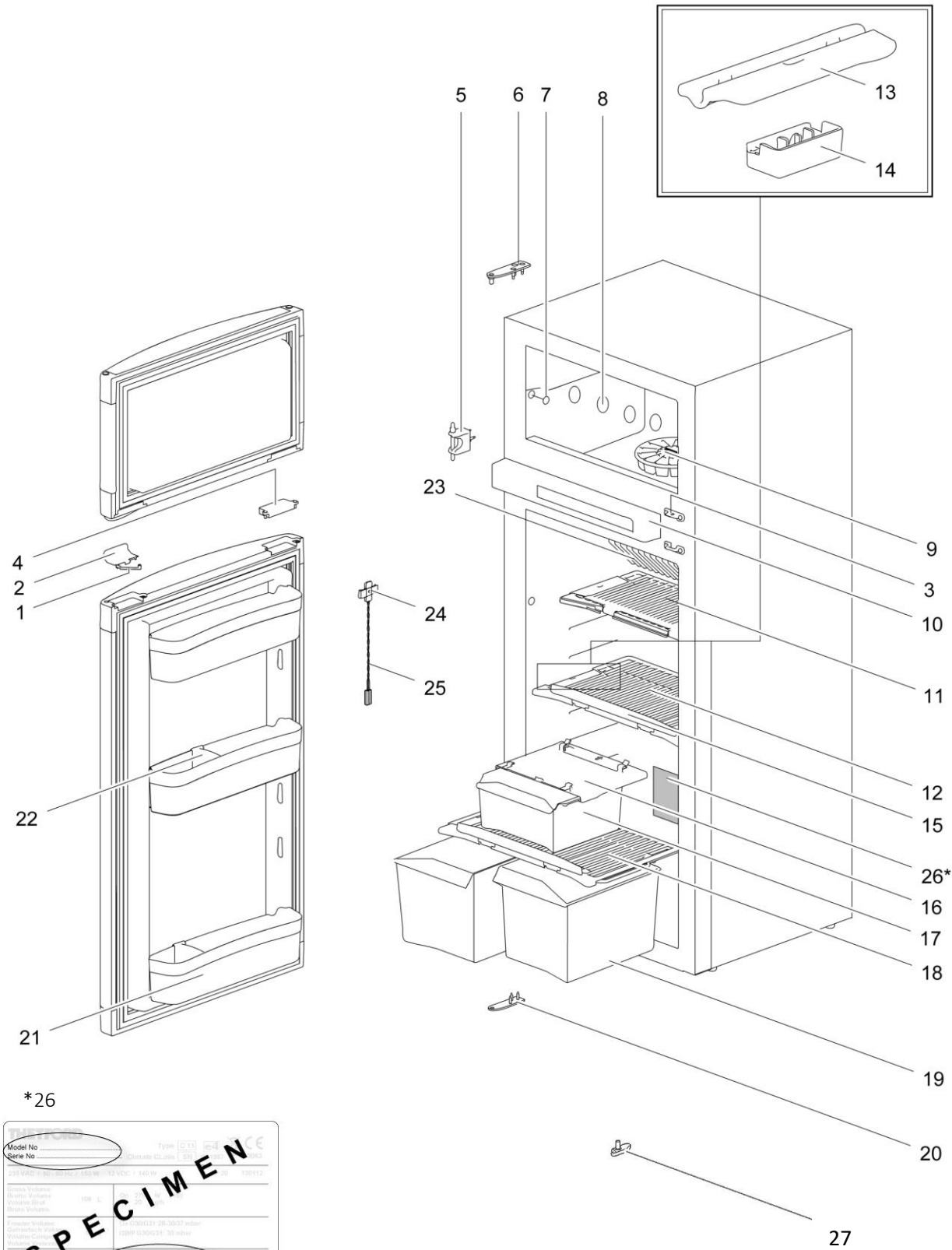
		Spare part number	Spare part number	Spare part number	Colours available
1	Storage strap (2x)	626986	626985 colours available 27	691468 ≥ 31-06- 2016 (E151T.....)	27
2	Latch				
3	Strike plate				
4	Pocket cover				
5	Hinge center				
6	Hinge plate				
7	Cap (2x)	623622			08
8	Cap freezer bolt (12x)	624479			08
9	Ice cube tray				
10	Control panel	<i>Refer to page 40</i>			
11	Shelf rack 415 x 200	692511			144
12	Shelf rack 415 x 250	692512			144
13	Clip shelf rack small	692513			08
14	Clip rack safety lock	692515			08
15	Food retainer	692516			08
16	Slide out box guide	692518			144
17	Slide out box	692517			144
18	Shelf rack 415 x 250	692512			144
19	Vegetable bin reversible	692524			144
20	Hinge plate				
21	Door bin flat	692519			144
22	Bottle retainer	692521			08
23	Fin				
24	Fin clip			623077	
25	Thermistor				
26*	Identification label				
27	Bottom latch	624001			27

* With a request for information or service, always provide the serial number of the refrigerator. The serial number is the code below the barcode on the identification label.



		Spare part number	Spare part number	Spare part number	Colours available
1	Storage strap (2x)	626986	626985 colours available: 27	691739 ≥ 24-04-2018 (E114V.....)	27
2	Latch				
3	Strike plate				
4	Pocket cover				
5	Hinge center				
6	Hinge plate				
7	Cap (2x)	623622			08
8	Cap freezer bolt (12x)	624479			08
9	Shelf freezer 404 x 238.5	690843			08
10	Ice cube tray				
11	Control panel	Refer to page 42			
12	Fin				
13	Shelf 428.4 x 232.3	690844			08
14	Clip shelf large	623625			08
15	Fin clip			623077	
16	Thermistor				
17	Identification label *				
18	Shelf 428.4 x 282.3	690845			08
19	Clip shelf large	623625			08
20	Vegetable bin	690829			08
21	Latch bottom	624001			27
22	Hinge plate				
23	Door bin curved wide	690842			08
24	Bottle retainer	626989			12
25	Door bin curved shallow	690841			08
26	Shelf food retainer	691188			08

* With a request for information or service, always provide the serial number of the refrigerator. The serial number is the code below the barcode on the identification label.



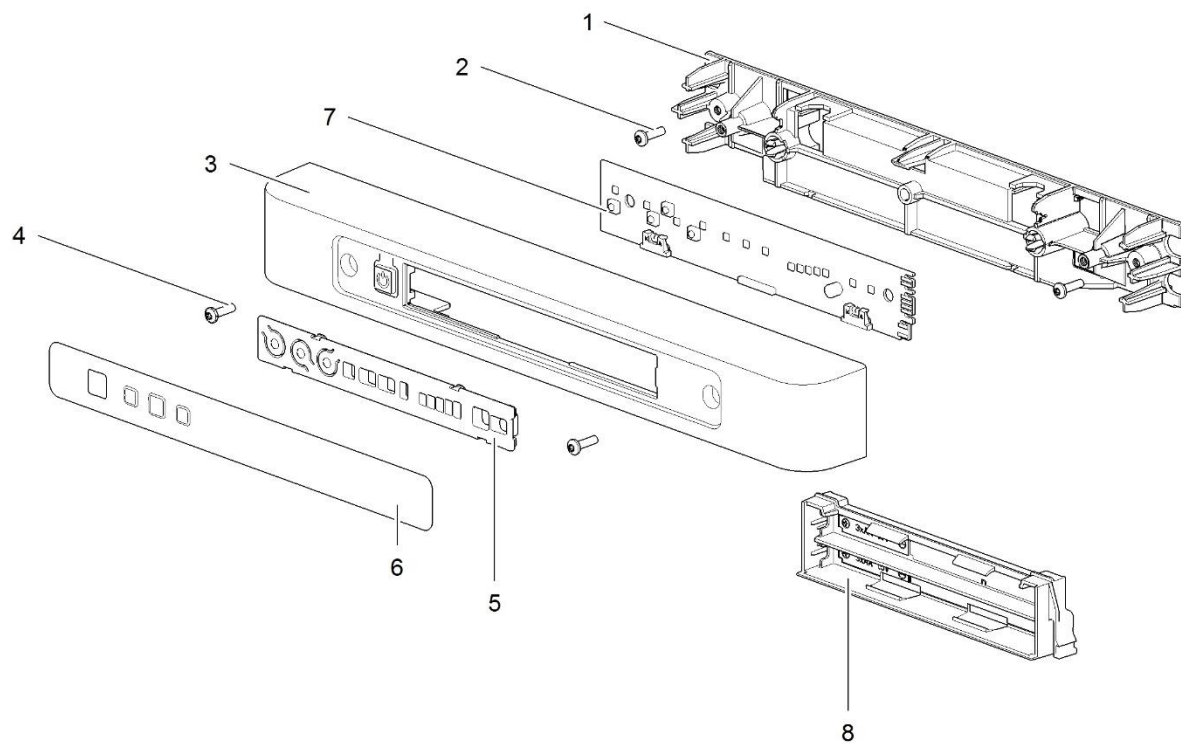
*26



LE1063-N3170-front_0518-V04

		Spare part number	Spare part number	Spare part number	Colours available
1	Storage strap (2x)	626986	626985 colours available 27	691739 ≥ 24-04-2018 (E114V.....)	27
2	Latch				
3	Strike plate				
4	Pocket cover				
5	Hinge center				
6	Hinge plate				
7	Cap (2x)	623622			08
8	Cap freezer bolt (12x)	624479			08
9	Ice cube tray				
10	Control panel	Refer to page 42			
11	Shelf rack 415 x 200	692511			144
12	Shelf rack 415 x 250	692512			144
13	Clip shelf rack small	692513			08
14	Clip rack safety lock	692515			08
15	Food retainer	692516			08
16	Slide out box guide	692518			144
17	Slide out box	692517			144
18	Shelf rack 415 x 250	692512			144
19	Vegetable bin reversible	692524			144
20	Hinge plate				
21	Door bin curved	692520			144
22	Bottle retainer	692521			08
23	Fin				
24	Fin clip			623077	
25	Thermistor				
26*	Identification label				
27	Bottom latch	624001			27

* With a request for information or service, always provide the serial number of the refrigerator. The serial number is the code below the barcode on the identification label.

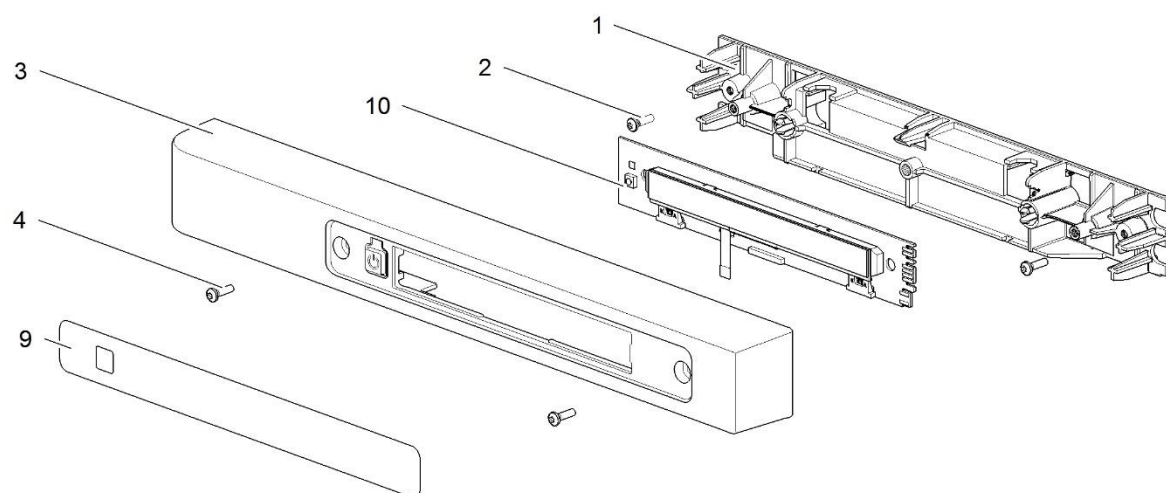
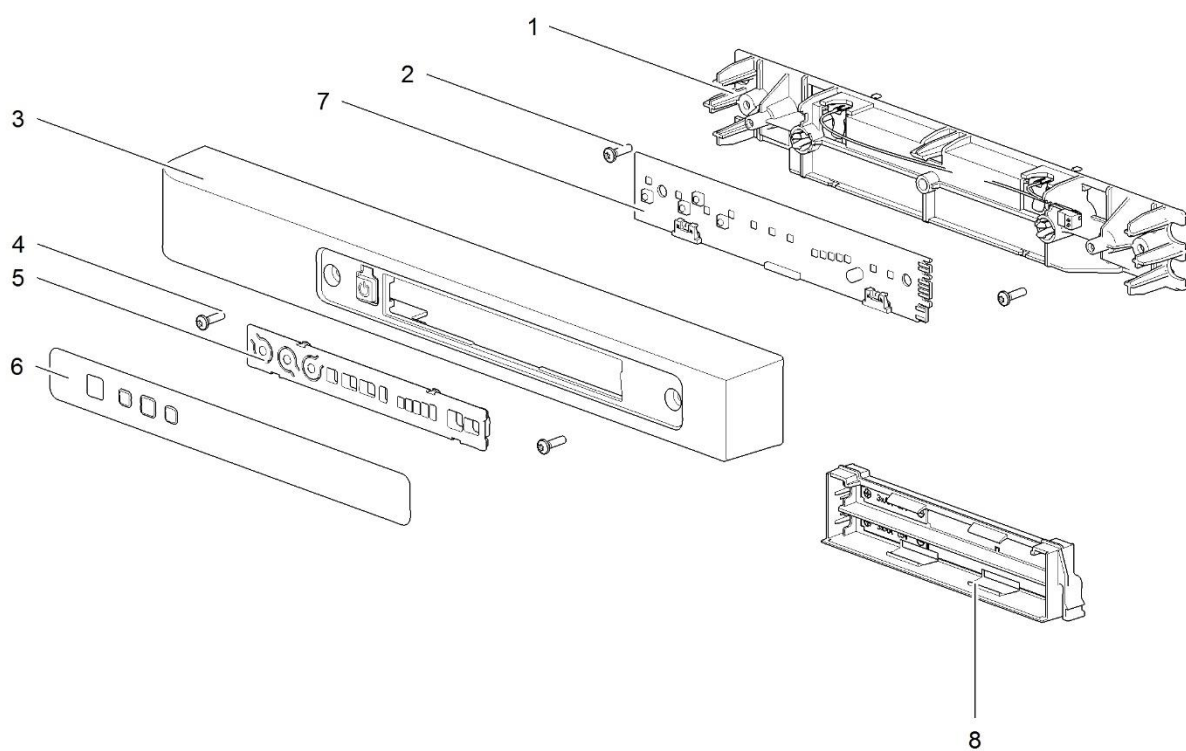


		Spare part number	Spare part number	Spare part number	Colours available
1	Technical panel flat ¹	690806			
2	Screws				
3	Housing flat ¹	690807			27, 136
4	Screws				
5	Overlay LED		691105		
6	Sticker LED	691106			
7	PCB LED DM			691126	
	≥ 20-06-2015 (E171S.....)				
	< 20-06-2015 (E171S.....)	691138 <i>LED version kit²</i>			
8	Battery hatch				
	Battery pack	690225			27

¹ Order also spare part 'Sticker LED' (#6) with this spare part number

² *LED version kit* contains:

- Power control board
- PCB LED Displaymodule
- Sticker LED
- Overlay LED
- Conversion cable



		Spare part number	Spare part number	Spare part number	Spare part number	Colours available
1	Technical panel flat ^{1/2}	690806				
2	Screws					
3	Housing flat ^{1/2}					
	right hinged flat door 10 mm	691463				
	right hinged	690819				07, 27
	left hinged	690820				07, 27, 136
	left hinged flat door 10 mm	691464				
4	Screws					
5	Overlay LED		691105			
6	Sticker LED	691106				
7	PCB LED DM			691126	691103*	
	≥ 20-06-2015 (E171S.....)					
	< 20-06-2015 (E171S.....)	691138 <i>LED version kit³</i>				
8	Battery hatch					
	Battery pack	690225				27
9	Sticker LCD	691110				
10	PCB LCD DM		691108			
	≥ 20-06-2015					
	< 20-06-2015 (E171S.....)	691139 <i>LCD version kit⁴</i>				

¹ Order also spare part 'Sticker LED' (#6) with this spare part number for a LED-version

² Order also spare part 'Sticker LCD' (#9) with this spare part number for a LCD-version

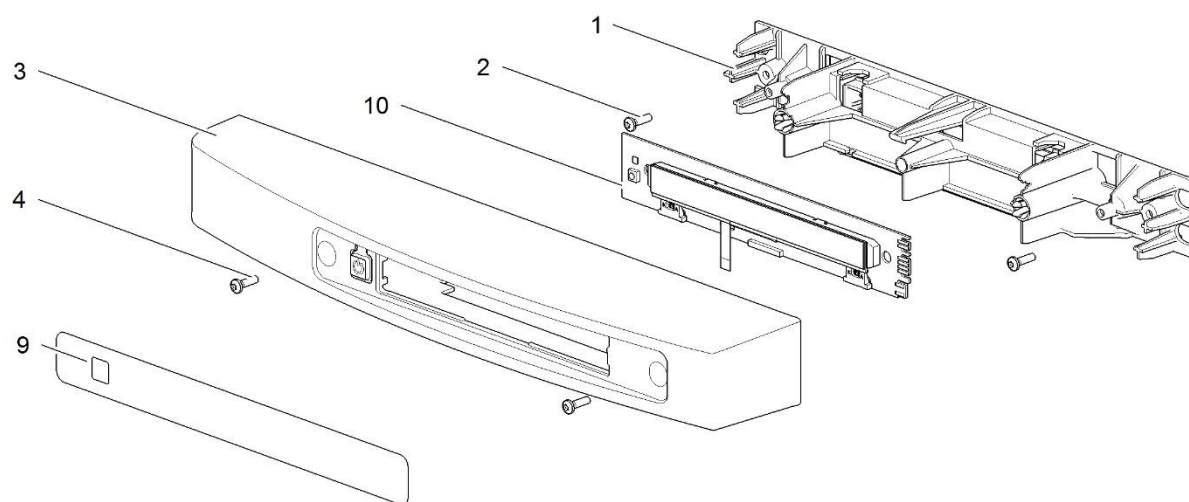
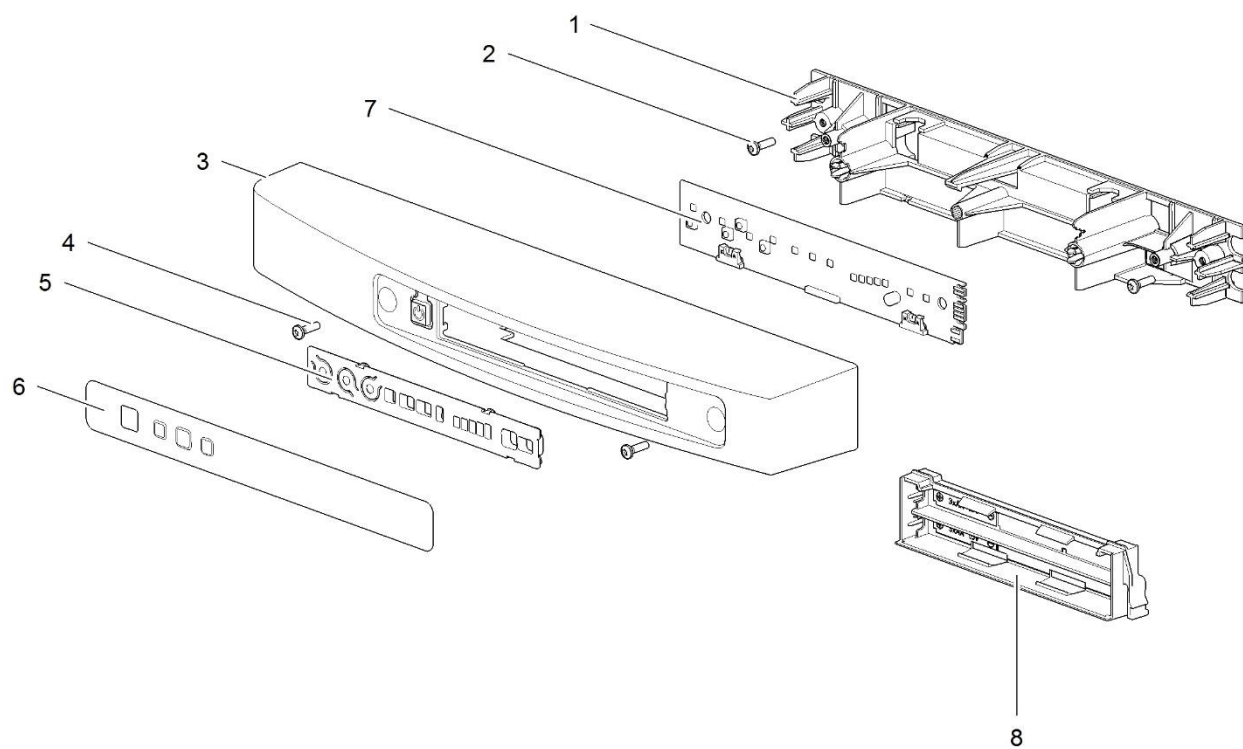
³ LED version kit contains:

- Power control board
- PCB LED display module
- Sticker LED
- Overlay LED
- Conversion cable

⁴ LCD version kit contains:

- Power control board
- PCB LCD display module
- Sticker LCD
- Conversion cable

* Only for N3170 automatic LED+ version



		Spare part number	Spare part number	Spare part number	Colours available
1	Technical panel curved ^{1/2}	690825			
2	Screws				
3	Housing curved ^{1/2}				
	right hinged	690826			07, 27
	left hinged	690827			27, 136
4	Screws				
5	Overlay LED		691105		
6	Sticker LED	691106			
7	PCB LED DM			691126	
	≥ 20-06-2015 (E171S.....)				
	< 20-06-2015 (E171S.....)	691138 <i>LED version kit³</i>			
8	Battery hatch				
	Battery pack	690225			27
9	Sticker LCD	691110			
10	PCB LCD DM		691108		
	≥ 20-06-2015 (E171S.....)				
	< 20-06-2015 (E171S.....)	691139 <i>LCD version kit⁴</i>			

¹ Order also spare part 'Sticker LED' (#6) with this spare part number for a LED-version

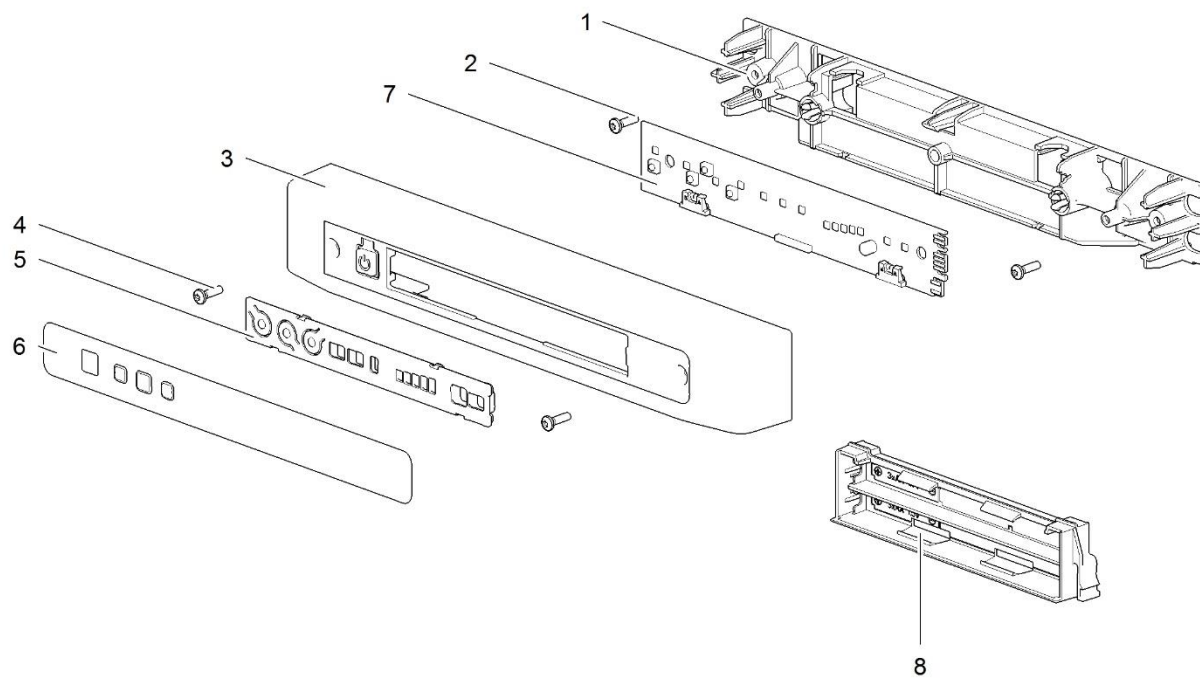
² Order also spare part 'Sticker LCD' (#9) with this spare part number for a LCD-version

³ LED version kit contains:

- Power control board
- PCB LED display module
- Sticker LED
- Overlay LED
- Conversion cable

⁴ LCD version kit contains:

- Power control board
- PCB LCD display module
- Sticker LCD
- Conversion cable

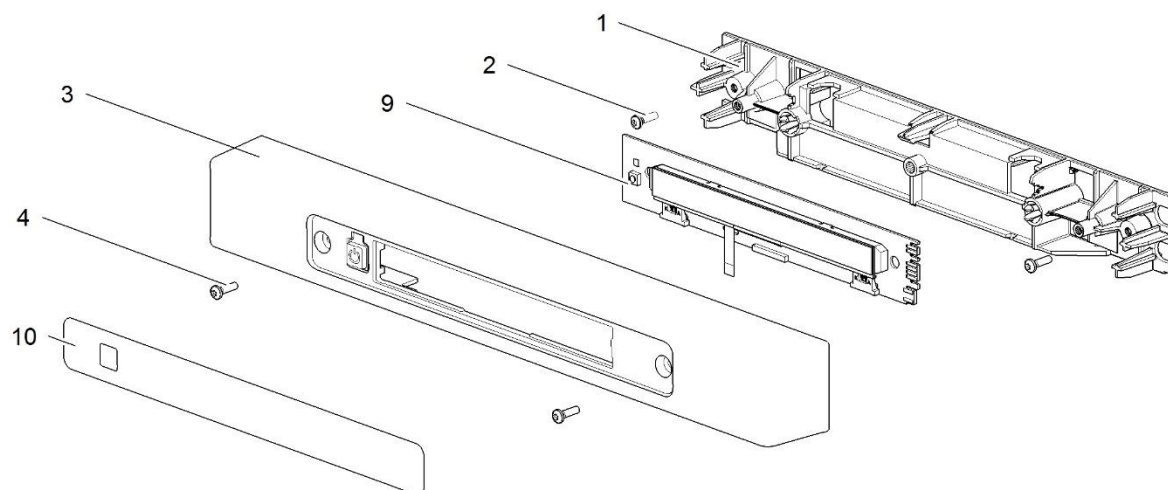
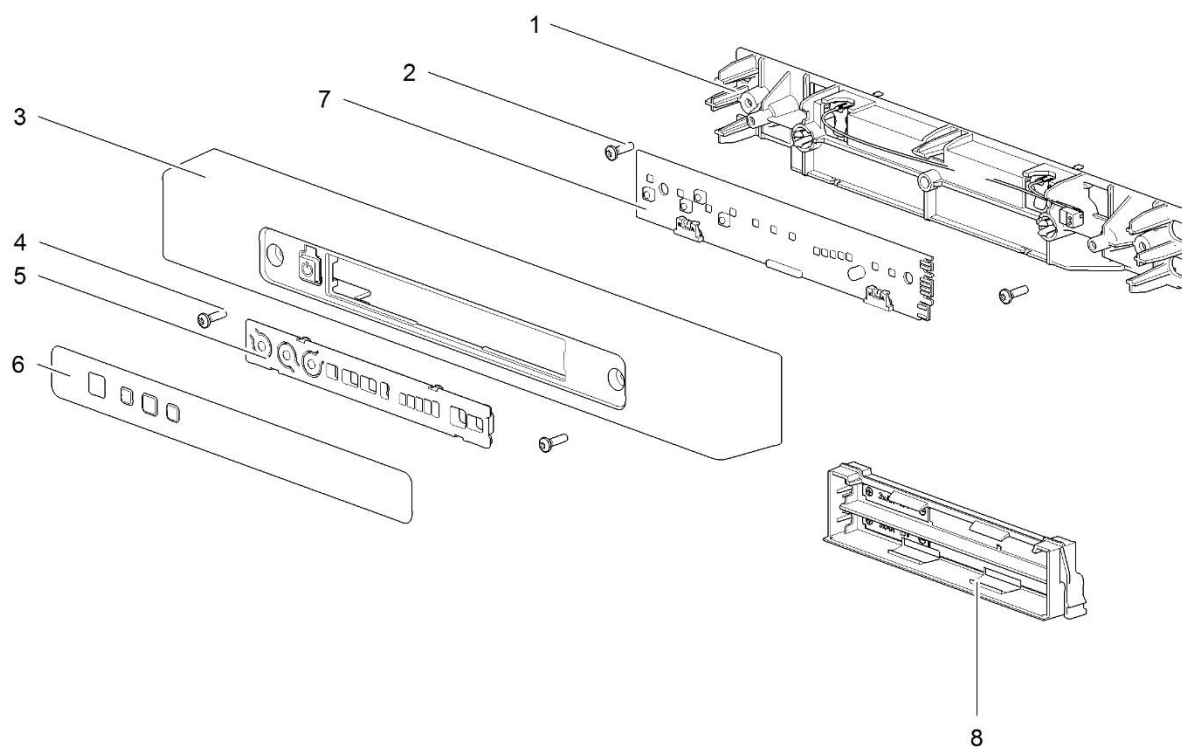


		Spare part number	Spare part number	Spare part number	Colours available
1	Technical panel flat ¹	690806			
2	Screws				
3	Housing flat				
4	Screws				
5	Overlay LED		691105		
6	Sticker LED	691106			
7	PCB LED DM				
	< 20-06-2015 (E171S.....)	691138 <i>LED version kit²</i>			
	≥ 20-06-2015 (E171S.....)	691126			
8	Battery hatch				
	Battery pack	690225			27

¹ Order also spare part 'Sticker LED' (#6) with this spare part number

² *LED version kit* contains:

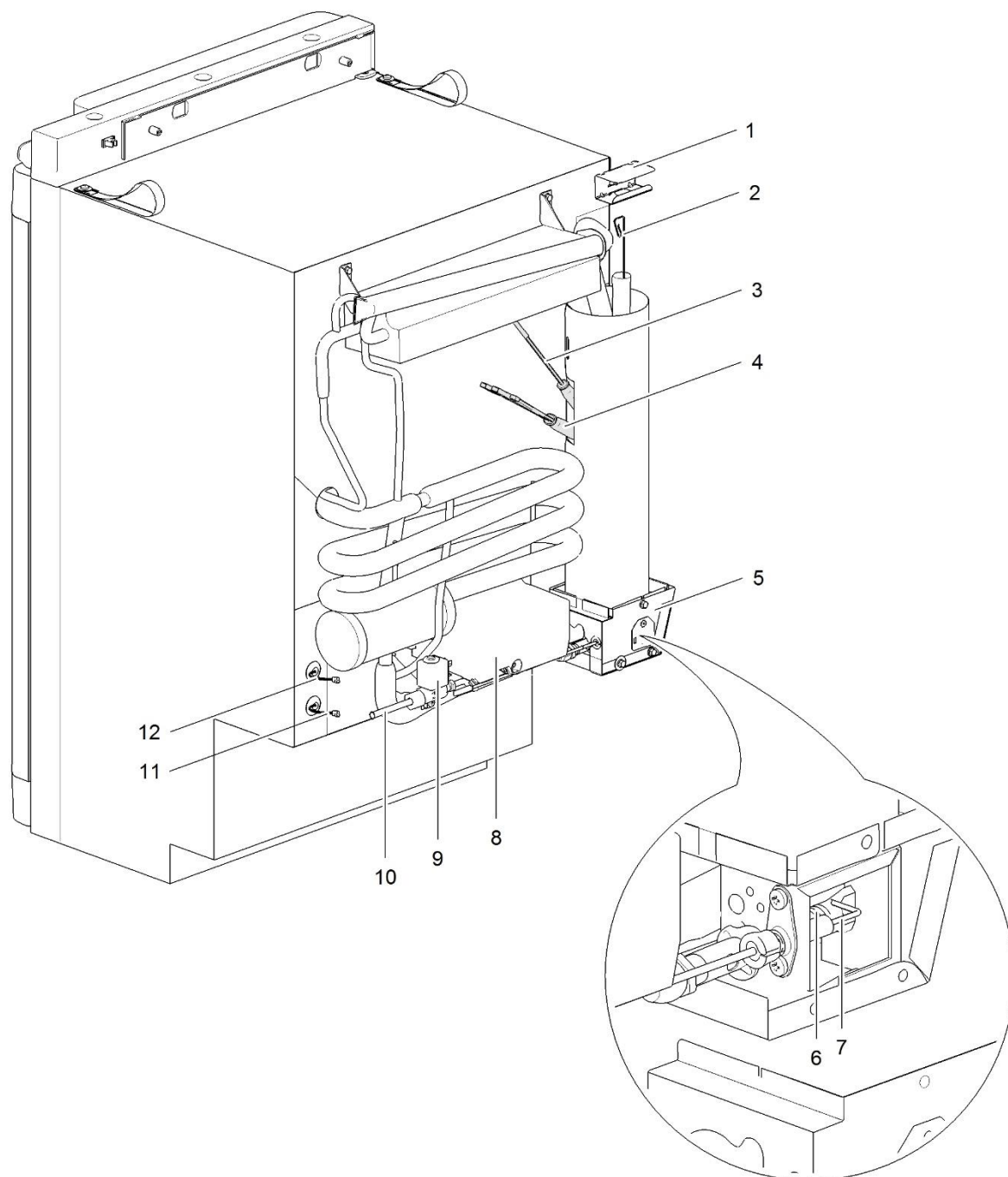
- Power control board
- PCB LED Displaymodule
- Sticker LED
- Overlay LED
- Conversion cable



		Spare part number	Spare part number	Spare part number	Colours available
1	Technical panel flat ^{1/2}	691102			
2	Screws				
3	Housing flat ^{1/2}		691104		27
4	Screws				
5	Overlay LED		691105		
6	Sticker LED	691106		691103	
7	PCB LED+ DM				
8	Battery hatch				
	Battery pack	690225			27
9	PCB LCD DM		691108		
10	Sticker LCD	691110			

¹ Order also spare part 'Sticker LED' (#6) with this spare part number for a LED-version

² Order also spare part 'Sticker LCD' (#10) with this spare part number for a LCD-version



LE997_N3080-N3090-N3097-N3108-N3112-N3115-back_0913-V04

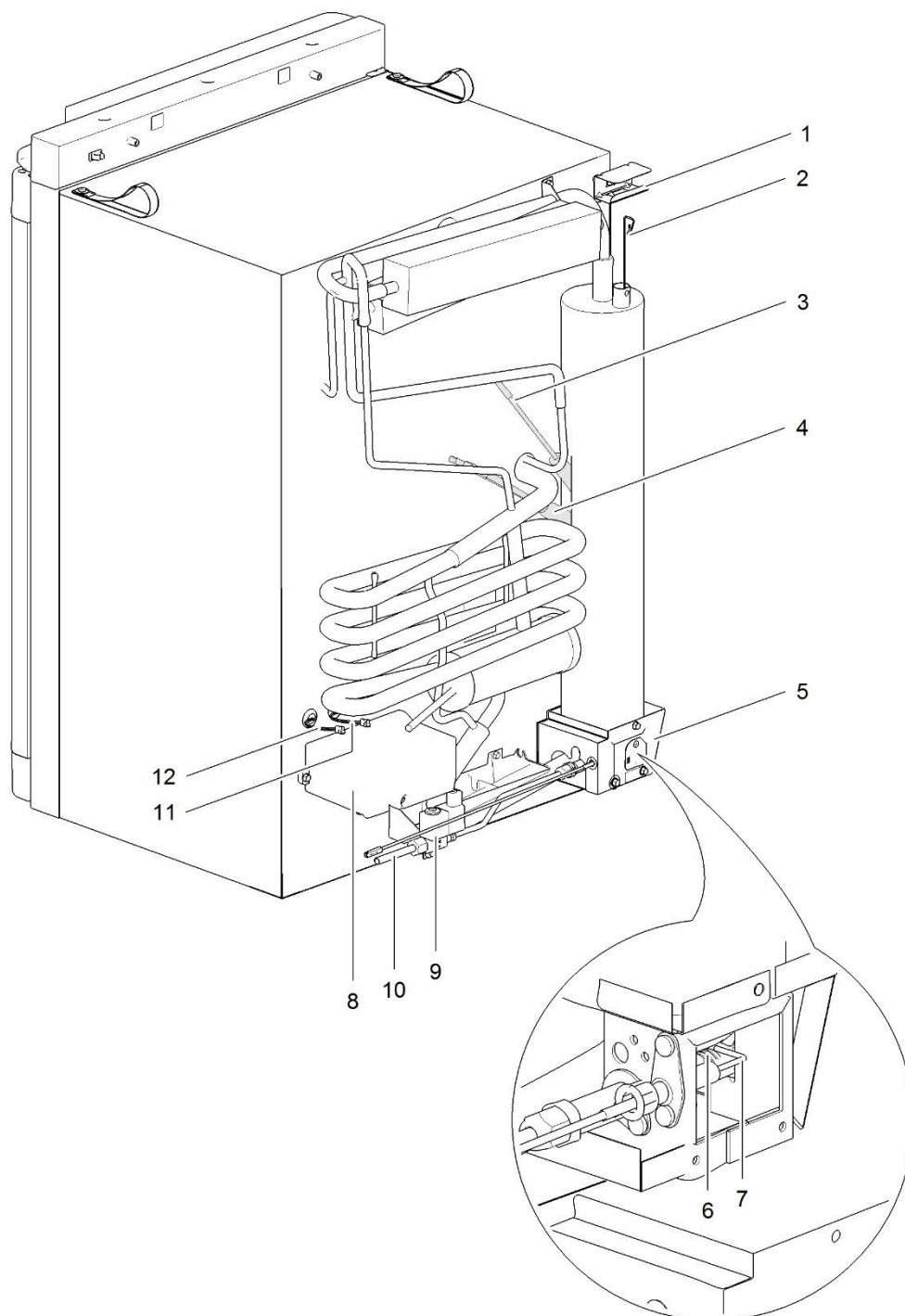
		Spare part number	Spare part number	Colours available
1	Heat cap	690812		
2	Heat diffuser	690878		
3	Heater AC	633575		
4	Heater DC	633574		
5	Heater box			
6	Burner assembly	634570		
7	Spark electrode	690813		
8	Power control board			
	< 20-06-2015 (E171S.....)	691138 <i>LED version kit¹</i>	691139 <i>LCD version kit²</i>	
	≥ 20-06-2015 (E171S.....)	692247	(old SR 691101 is not available any more)	
9	Gas valve	690810		
10	Gas pipe			
11	Thermistor cable			
	Loose connector temperature <i>power board side</i>	690855	690853	
12	Communication cable			
	Loose connector communication	690856	690854	

¹ LED version kit contains:

- Power control board
- PCB LED display module
- Sticker LED
- Overlay LED
- Conversion cable

² LCD version kit contains:

- Power control board
- PCB LCD display module
- Sticker LCD
- Conversion cable



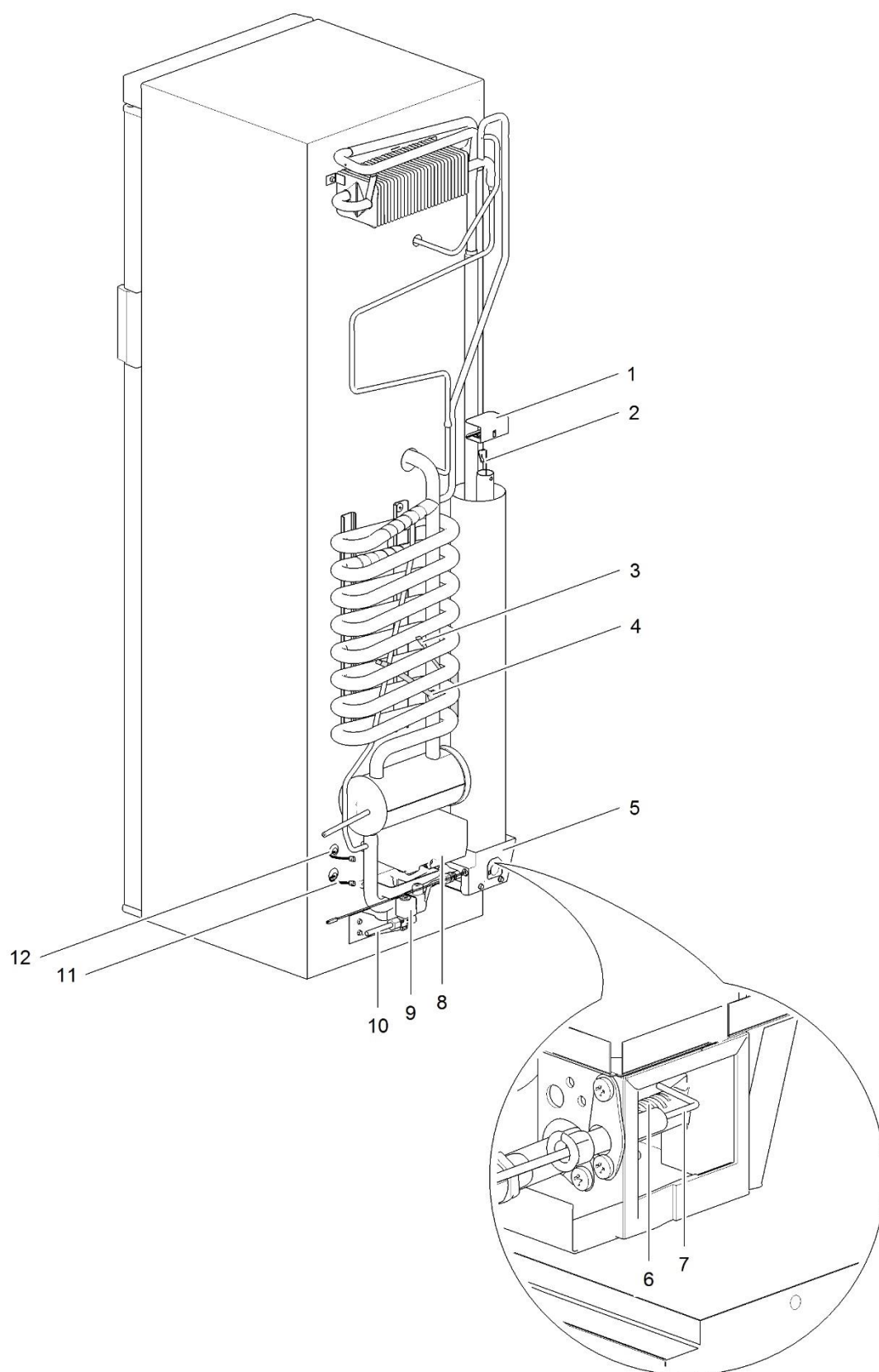
		Spare part number	Spare part number	Colours available
1	Heat cap	690812		
2	Heat diffuser	690878		
3	Heater AC	633575		
4	Heater DC	633574		
5	Heater box			
6	Burner assembly	623019		
7	Spark electrode	690830		
8	Power control board			
	< 20-06-2015 (E171S.....)	691138 <i>LED version kit¹</i>	691139 <i>LCD version kit²</i>	
	≥ 20-06-2015 (E171S.....)	692247	(old SR 691101 is not available anymore)	
9	Gas valve	690810		
10	Gas pipe			
11	Thermistor cable			
	Loose connector temperature <i>power board side</i>	690855	690853	
12	Communication cable			
	Loose connector communication	690856	690854	

¹ LED version kit contains:

- Power control board
- PCB LED display module
- Sticker LED
- Overlay LED
- Conversion cable

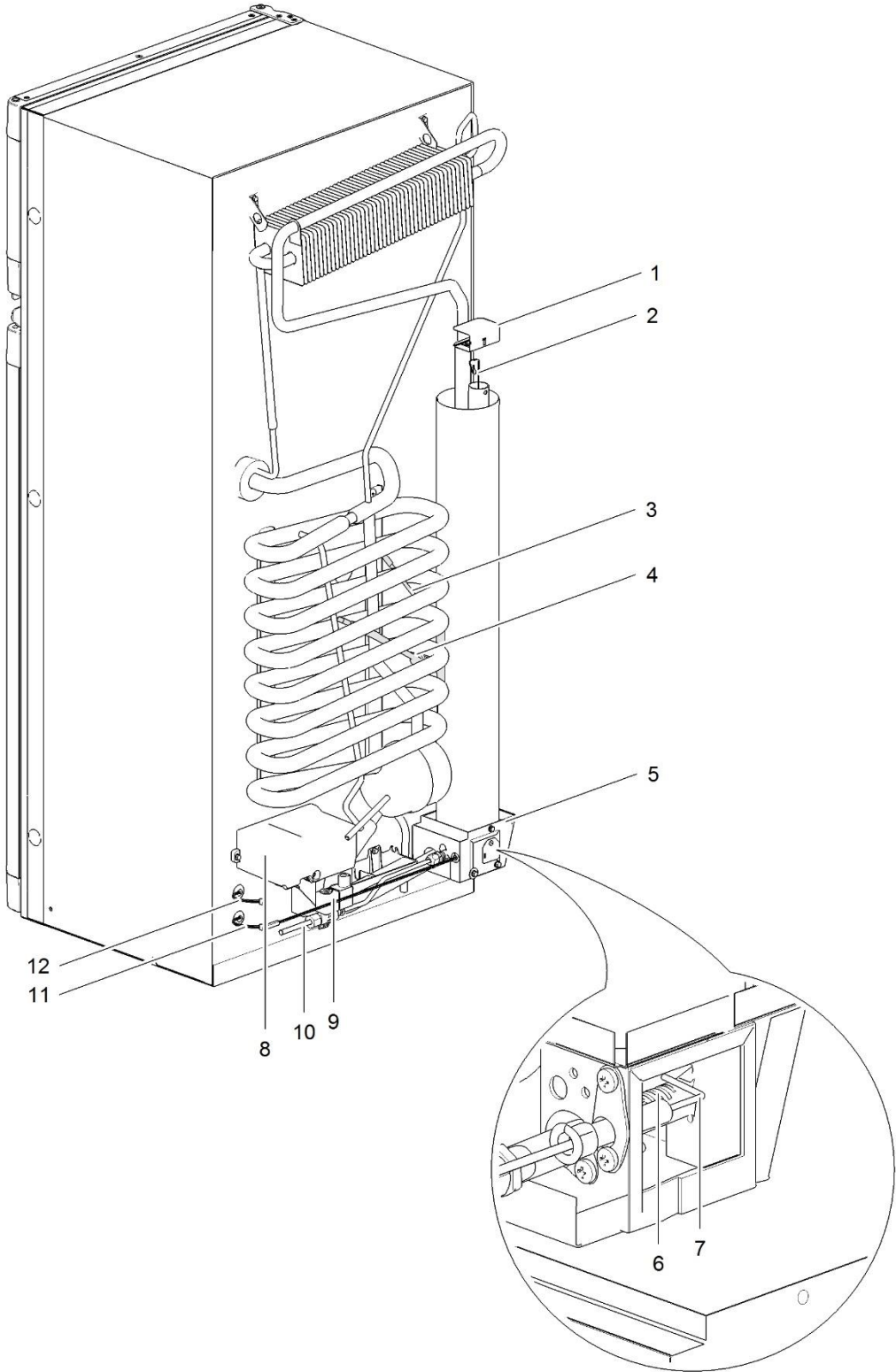
² LCD version kit contains:

- Power control board
- PCB LCD display module
- Sticker LCD
- Conversion cable



LE1112_N3141-N3142-back

		Spare part number	Spare part number	Colours available
1	Heat cap	690839		
2	Heat diffuser	692583		
3	Heater AC	691124		
4	Heater DC	691125		
5	Heater box			
6	Burner assembly	623058		
7	Spark electrode	690840		
8	Power control board	692247	(old SR 691101 is not available anymore)	
9	Gas valve	690810		
10	Gas pipe			
11	Thermistor cable		690853	
	Loose connector temperature <i>power board side</i>	690855		
12	Communication cable		690854	
	Loose connector communication	690856		



LE1001_N3145-N3150-N3170-N3175-back

		Spare part number	Spare part number	Colours available
1	Heat cap	690839		
2	Heat diffuser	690879		
3	Heater AC	633573		
4	Heater DC	633572		
5	Heater box			
6	Burner assembly	623058		
7	Spark electrode	690840		
8	Power control board			
	< 20-06-2015 (E171S.....)	691138 <i>LED version kit¹</i>	691139 <i>LCD version kit²</i>	
	≥ 20-06-2015 (E171S.....)	692247	(old SR 691101 is not available any more)	
9	Gas valve	690810		
10	Gas pipe			
11	Thermistor cable			
	Loose connector temperature <i>power board side</i>	690855	690853	
12	Communication cable			
	Loose connector communication	690856	690854	

¹ LED version kit contains:

- Power control board
- PCB LED display module
- Sticker LED
- Overlay LED
- Conversion cable

² LCD version kit contains:

- Power control board
- PCB LCD display module
- Sticker LCD
- Conversion cable