

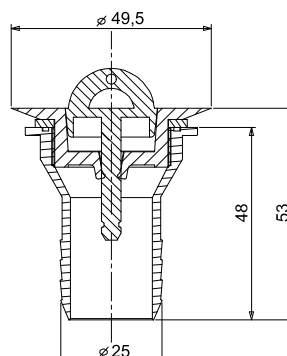


BATHROOM ACCESSORIES

ACCESSORI PER IL BAGNO

color codes

STRAIGHT DRAIN PIPES / PILETTE DRITTE



| Part Nr. Codice | Basic drain pipe Corpo pipetta | Ø | Automatic plug Tappo automatico | Plug with chain Tappo catenella | Gasket Guarnizione | Ring nut Ghiera | Altro Other |
|--------------------|-----------------------------------|-------|------------------------------------|------------------------------------|-----------------------|--------------------|----------------|
| G23A004 | PLA179 | 20 mm | - | PLA192 | PLA005 | PLA182 | - |
| G23A028 | PLA959 | 20 mm | - | PLA191 | PLA006 | PLA181 | - |
| G23A032 | PLA959 | 20 mm | X | - | PLA006 | PLA181 | - |
| G23A045 | PLA179 | 20 mm | - | PLA192 | PLB605 | PLA182 | PLA1000 |
| G23A049 | PLA972 | 20 mm | - | PLA192 | PLA005 | PLA182 | - |
| G23A095 | PLA179 | 20 mm | - | G96A015 | PLA005 | PLA182 | PLA1000 |
| G23A097 | PLA959 | 20 mm | X | - | PLA607 | PLA181 | - |
| G23A102 | PLA959 | 20 mm | - | - | PLA006 | PLA181 | - |
| G23A105 | PLA179 | 20 mm | - | G96A017 | PLA005 | PLA182 | PLA1000 |
| G23A106 | PLA179 | 20 mm | - | - | - | PLA182 | - |
| G23A108 | PLA959 | 20 mm | - | - | - | PLA181 | - |
| G23A027 | PLA958 | 25 mm | - | PLA191 | PLA006 | PLA181 | - |
| G23A031 | PLA958 | 25 mm | X | - | PLA006 | PLA181 | - |
| G23A094 | PLA958 | 25 mm | X | - | PLA273 | PLA181 | - |
| G23A007 | PLA186 | 30 mm | - | G96A001 | PLA003 | PLA187 | - |
| G23A034 | PLA186 | 30 mm | - | PLA968 | PLA003 | PLA187 | - |
| G23A043 | PLA186 | 30 mm | - | - | PLA003 | PLA187 | - |
| G23A109 | PLA186 | 30 mm | - | - | - | PLA187 | - |

color codes

DRAIN PIPES WITH SYPHON / PILETTE CON SIFONE



| Part Nr. Codice | Basic drain pipe Corpo pipetta |
|--------------------|-----------------------------------|
| PMA034 | 1" |
| PMA035 | 1/2" |

