

## Deluxe line

spare part list

### N80

Front	2
Controls	24
Back	30

### N90

Front	4
Controls	24
Back	30

### N97

Front	6
Controls	24
Back	30

### N98

Front	8
Controls	24
Back	30

### N100

Front	10
Controls	24
Back	32

### N100 LED

Front	10
Controls	26
Back LED	34

### N104

Front	12
Controls	24
Back	32

### N108

Front	14
Controls	24
Back	30

### N109

Front	16
Controls	24
Back	36

### N110

Front	12
Controls	24
Back	32

### N112

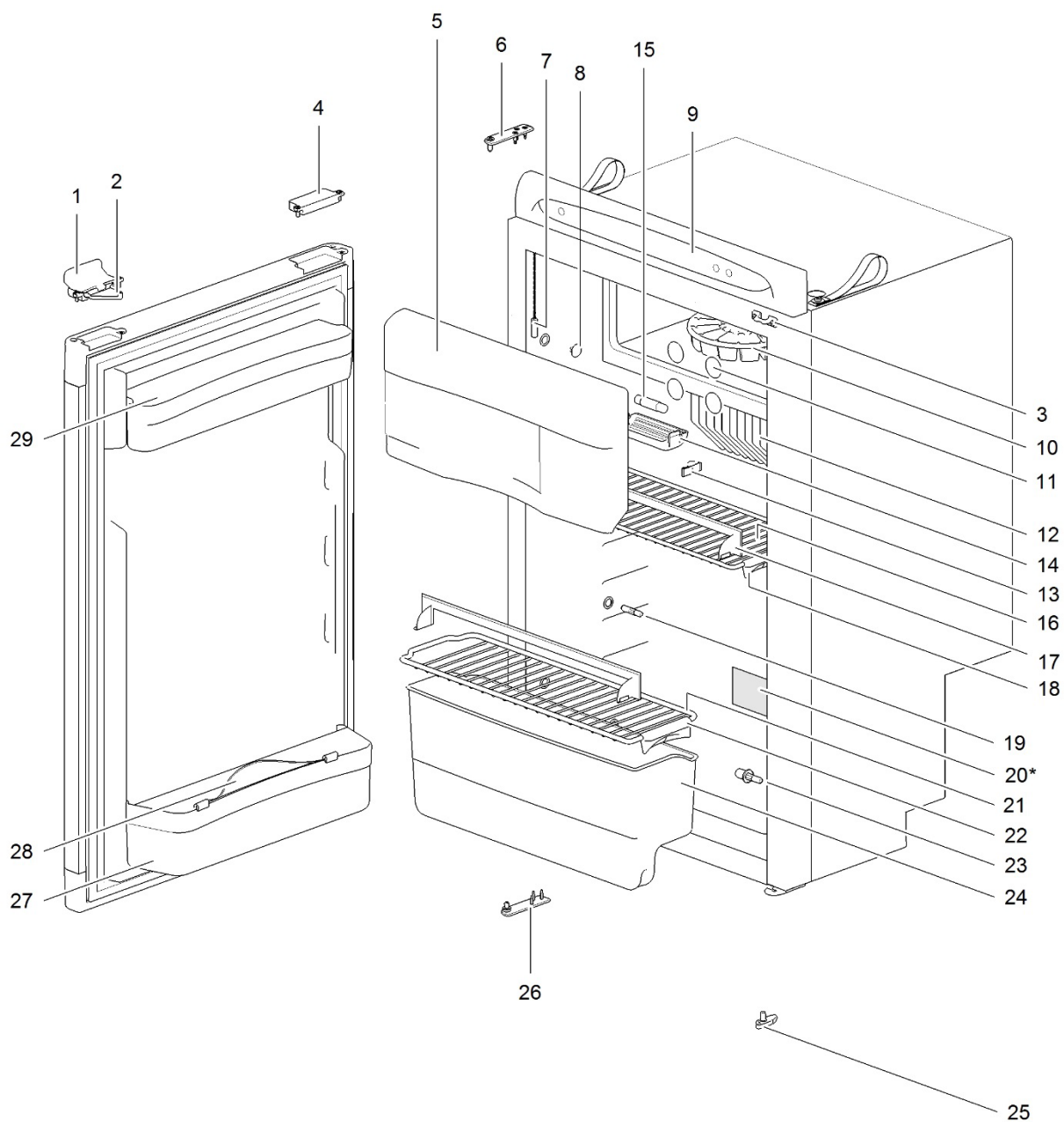
Front	18
Controls	24
Back	30

### N115

Front	20
Controls	24
Back	30

### N145 LED

Front	22
Controls LED	28
Back LED	38

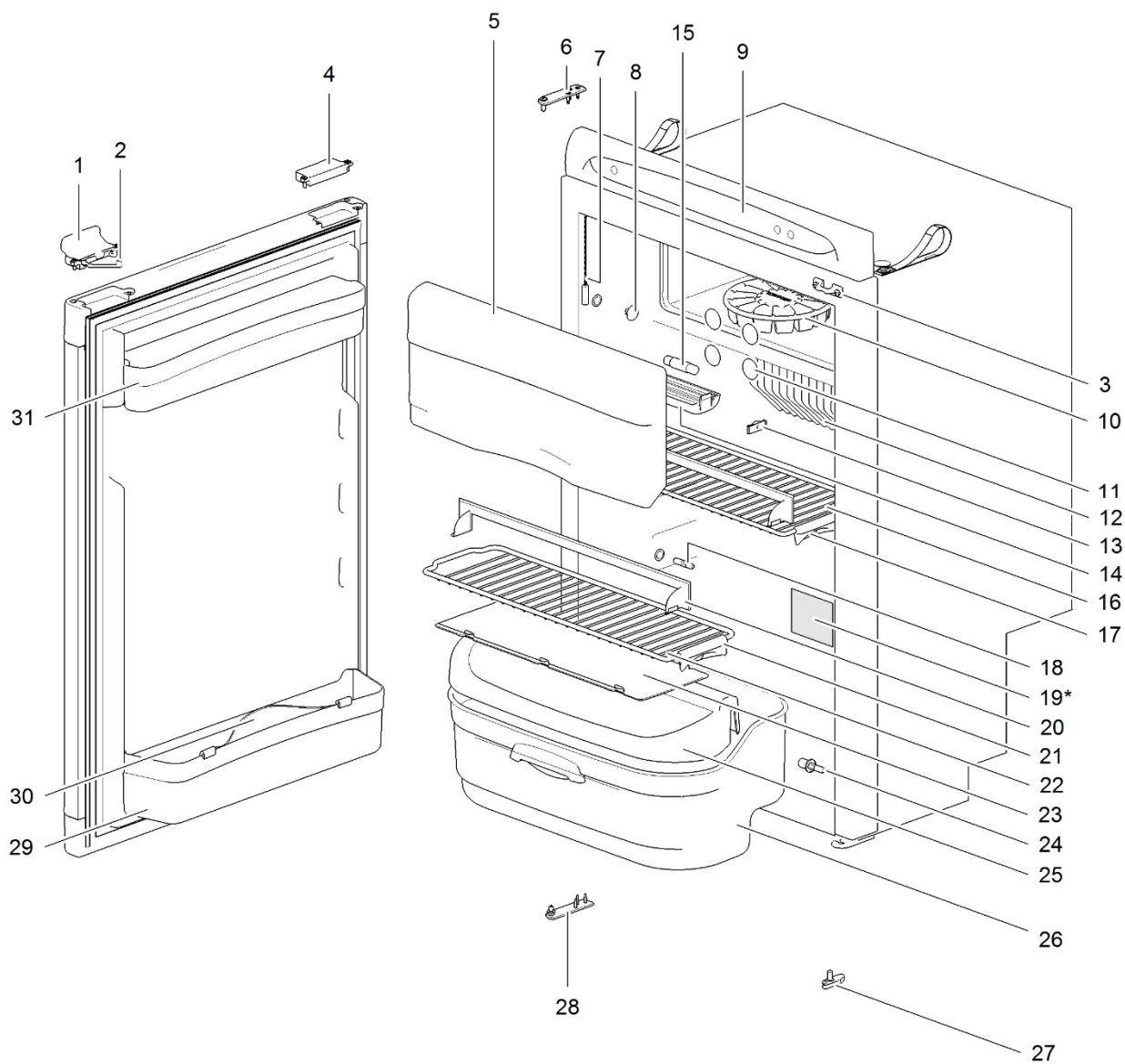


20\*

[illegible]

		Spare part number	Spare part number	Spare part number	Colours available
1	Latch V1 < 01/07/2005				
	Latch V2 ≥ 01/07/2005		not available replacement = 626985 27	626985	27
2	Storage strap V1 < 01/07/2005	624679			27
	Storage strap V2 ≥ 01/07/2005	626986			27
3	Strike plate				
4	Pocket cover				
5	Freezer door		623036		08
	Hinge freezer door (2x)	624680			08
6	Hinge plate				
7	Interior light switch	623018			08
8	Cap (2x)	623622			08
9	Control panel	Refer to page 24			
10	Ice cube tray				
11	Cap freezer bolt (12x)	624479			08
12	Fin				
13	Fin clip (3x)	623023			
14	Interior light cover	624002			
15	Interior light bulb	624003			
16	Shelf 415.7 x 163.9	623038			08
17	Shelf food retainer	624456			08
18	Clip shelf small	623626			08
19	Hinge pin				
20	Identification label *				
21	Shelf 415.7 x 118.2	623037			08
22	Clip shelf small	623626			08
23	Hinge pin				
24	Vegetable bin	623039			12
25	Latch bottom	624001			27
26	Hinge plate				
27	Door bin	690804			08
28	Bottle retainer	623042			12
29	Door bin	not available			

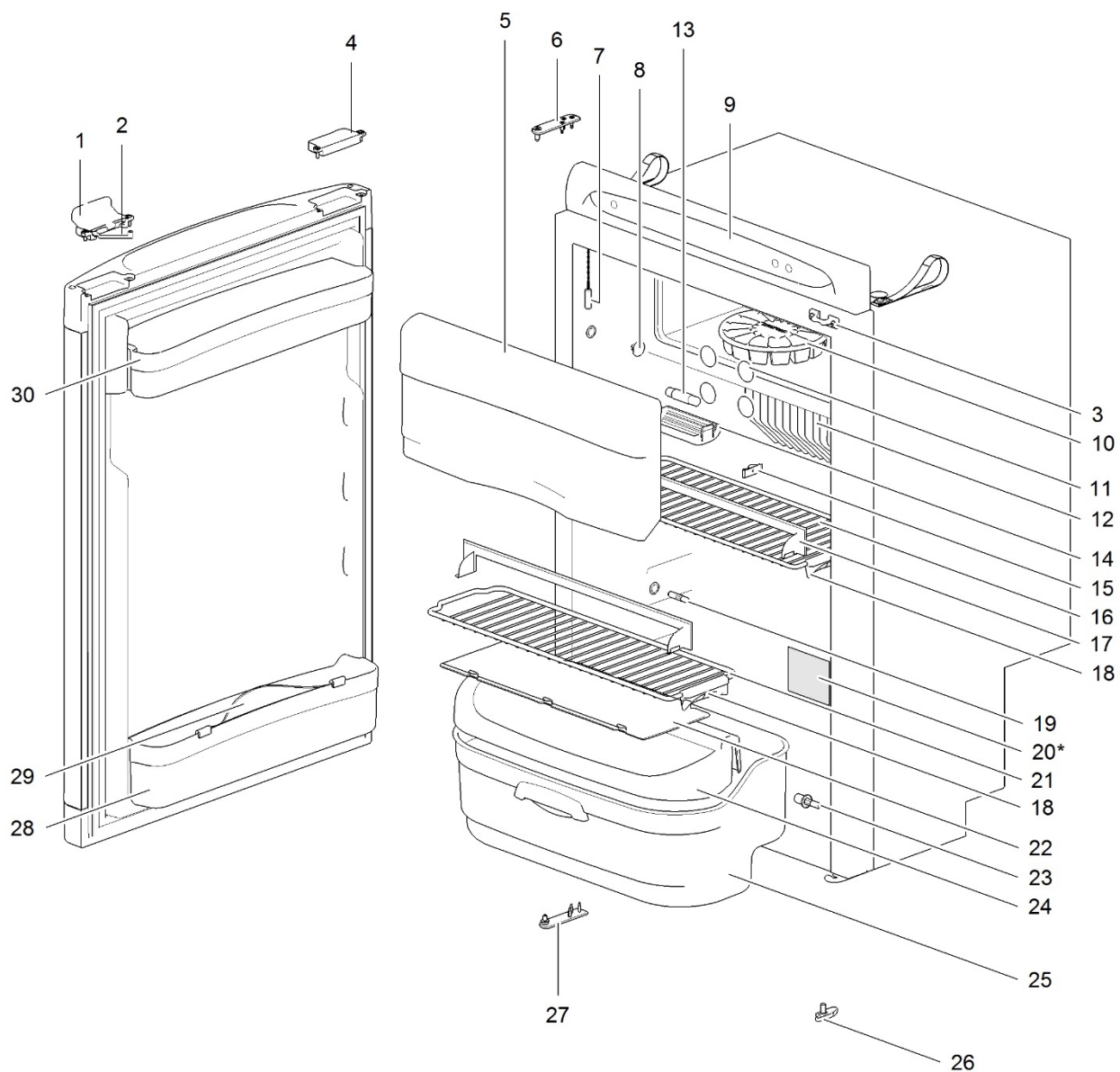
\* With a request for information or service, always provide the serial number of the refrigerator. The serial number is the code below the barcode on the identification label.





		Spare part number	Spare part number	Spare part number	Colours available
1	Latch V1 < 01/07/2005		not available replacement = 626985 27	626985	27
	Latch V2 ≥ 01/07/2005				
2	Storage strap V1 < 01/07/2005	624679			
	Storage strap V2 ≥ 01/07/2005	626986			
3	Strike plate				
4	Pocket cover				
5	Freezer door		690852		
	Hinge freezer door (2x)	624680			08
6	Hinge plate				
7	Interior light switch	623018			08
8	Cap (2x)	623622			08
9	Control panel	Refer to page 24			
10	Ice cube tray				
11	Cap freezer bolt (12x)	624479			08
12	Fin				
13	Fin clip (3x)	623023			
14	Interior light cover	624002			
15	Interior light bulb	624003			
16	Shelf 455 x 163.9	623048			08
17	Clip shelf small	623626			08
18	Hinge pin				
19	Identification label *				
20	Shelf food retainer	624456			08
21	Clip shelf small	623626			08
22	Shelf 455 x 118.2	623047			08
23	Shelf tray insert 403 x 97.9	623634			12
24	Hinge pin				
25	Flip top cover	623615			
26	Vegetable bin	623617			
27	Latch bottom	624001			27
28	Hinge plate				
29	Door bin	690818			08
30	Bottle retainer	623042			12
31	Door bin	690817			08

\* With a request for information or service, always provide the serial number of the refrigerator. The serial number is the code below the barcode on the identification label.



20\*



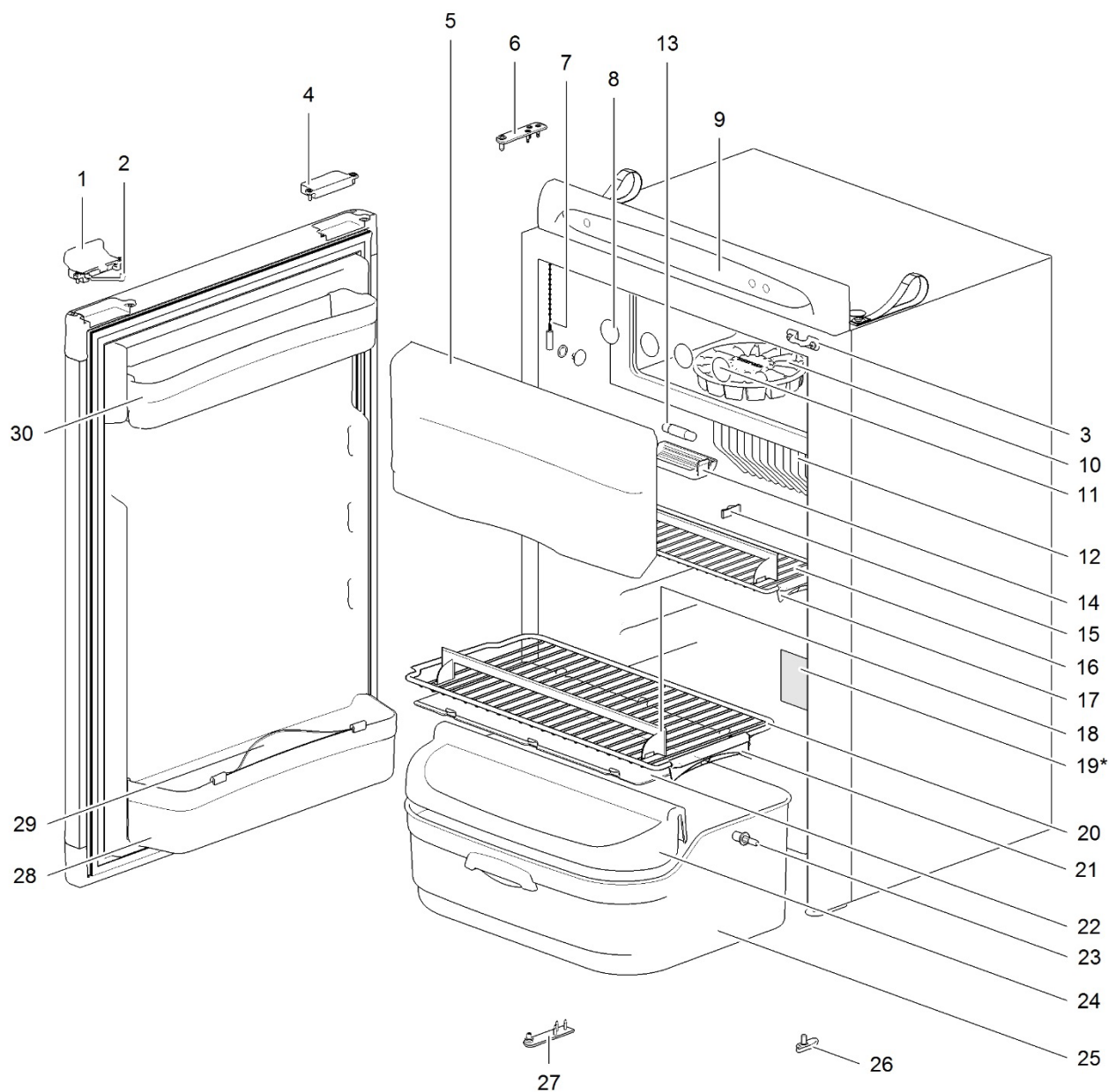
		Spare part number	Spare part number	Spare part number	Colours available
1	Latch V1 < 01/07/2005		not available replacement = 626985 27	626985	27
	Latch V2 ≥ 01/07/2005				
2	Storage strap V1 < 01/07/2005	624679			
	Storage strap V2 ≥ 01/07/2005	626986			
3	Strike plate				
4	Pocket cover				
5	Freezer door		690852		08
	Hinge freezer door (2x)	624680			
6	Hinge plate				
7	Interior light switch	623018			08
8	Cap (2x)	623622			08
9	Control panel	Refer to page 24			
10	Ice cube tray				
11	Cap freezer bolt (12x)	624479			08
12	Fin				
13	Interior light bulb	624003			
14	Interior light cover	624002			
15	Fin clip (3x)	623023			
16	Shelf 455 x 163.9	623048			08
17	Shelf food retainer	624456			08
18	Clip shelf small	623626			08
19	Hinge pin				
20	Identification label *				
21	Shelf 455 x 118.2	623047			08
22	Shelf tray insert 403 x 97.9	623634			12
23	Hinge pin				
24	Flip top cover	623615			
25	Vegetable bin	623617			
26	Latch bottom	624001			27
27	Hinge plate				
28	Door bin	not available			
29	Bottle retainer	623042			12
30	Door bin	624025			12

\* With a request for information or service, always provide the serial number of the refrigerator. The serial number is the code below the barcode on the identification label.



		Spare part number	Spare part number	Colours available
1	Latch V3		629744	90
2	Storage strap	626986		27
3	Strike plate			
4	Freezer door		690852	
	Hinge freezer door (2x)	624680		08
5	Hinge plate			
6	Interior light switch	623018		08
7	Cap (2x)	623622		08
8	Control panel	Refer to page 24		
9	Ice cube tray			
10	Cap freezer bolt (12x)	624479		08
11	Fin			
12	Fin clip (3x)	623023		
13	Interior light bulb	624003		
14	Interior light cover	624002		
15	Shelf 455 x 169.8	631738		08
16	Shelf food retainer	624457		08
17	Clip shelf small	623626		08
18	Identification label *			
19	Shelf tray insert			
20	Vegetable bin			
21	Latch bottom	624001		27
22	Hinge plate			
23	Door bin	629745		12
24	Bottle retainer	626989		12
25	Rail			
26	Door bin	629747		12

\* With a request for information or service, always provide the serial number of the refrigerator. The serial number is the code below the barcode on the identification label.



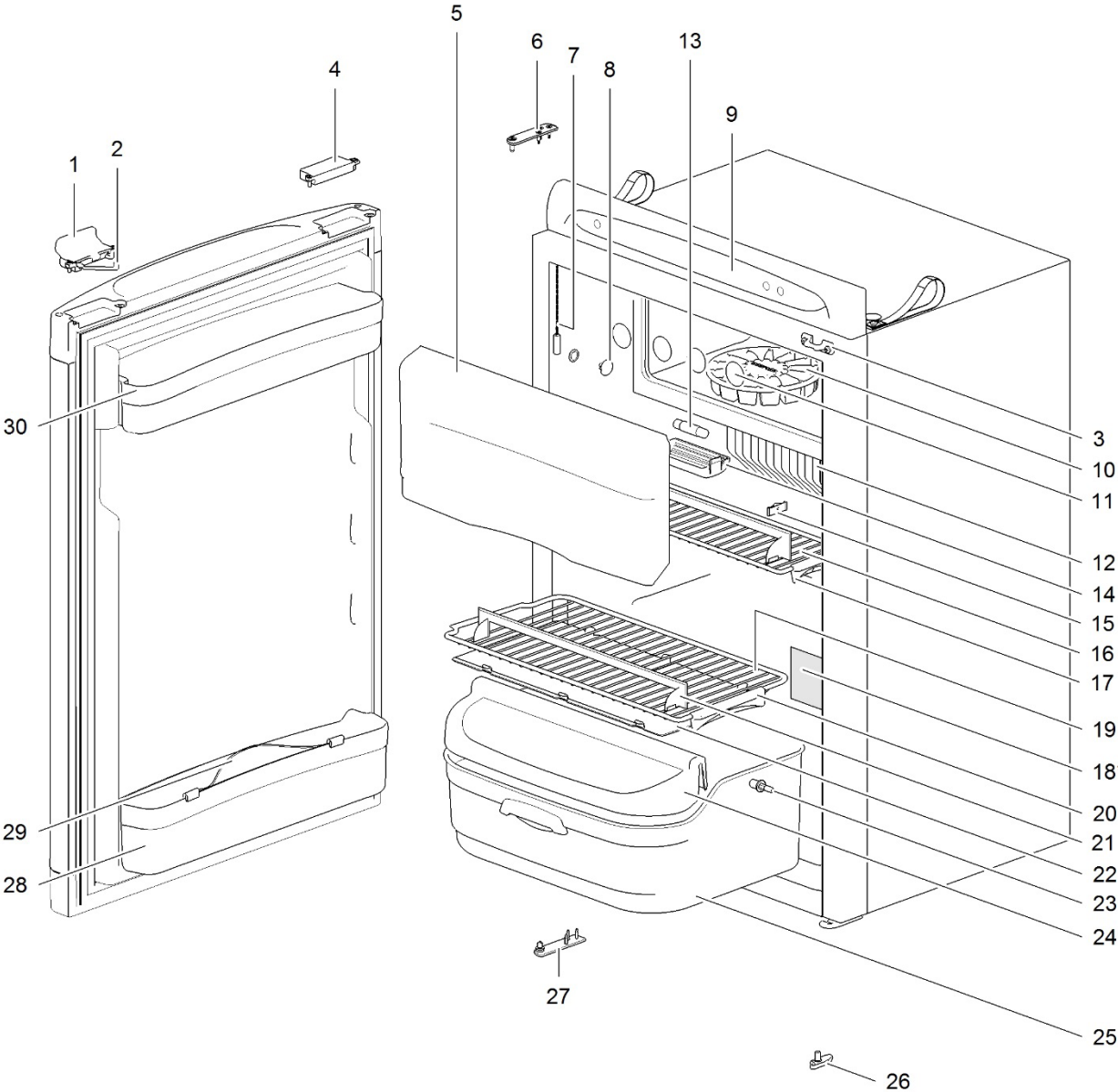
19\*



LE1073\_N100-front\_0614-V02

		Spare part number	Spare part number	Spare part number	Colours available
1	Latch V1 < 01/07/2005				
	Latch V2 ≥ 01/07/2005		not available replacement = 626985 27	626985	27
2	Storage strap V1 < 01/07/2005	624679			27
	Storage strap V2 ≥ 01/07/2005	626986			27
3	Strike plate				
4	Pocket cover				
5	Freezer door		690852		
	Hinge freezer door	624680			08
6	Hinge plate				
7	Interior light switch	623018			08
8	Cap (2x)	623622			08
9	Control panel	Refer to page 26			
10	Ice cube tray				
11	Cap freezer bolt (12x)	624479			08
12	Fin				
13	Interior light bulb	624003			
14	Interior light cover	624002			
15	Fin clip (3x)	623023			
	Fin clip for N100A (3x)	623059			
16	Shelf 455 x 118.2	623047			08
17	Clip shelf small	623626			08
18	Shelf food retainer	624456			08
19	Identification label *				
20	Shelf 455 x 212.3	623055			08
21	Clip shelf large	623625			08
22	Shelf tray insert 403 x 192	623635			12
23	Hinge pin				
24	Flip top cover	623615			
25	Vegetable bin	623618			
26	Latch bottom	624001			27
27	Hinge plate				
28	Door bin	690818			08
29	Bottle retainer	623042			12
30	Door bin	690817			08

\* With a request for information or service, always provide the serial number of the refrigerator. The serial number is the code below the barcode on the identification label.



18\*

**TEUFEL**

Model No. \_\_\_\_\_ Type **G 11** **604** **CE**  
Serie No. \_\_\_\_\_ Climate Class **2** **100**

230 VAC 50/60 Hz 150 W 12 VDC 140 W 20 130112

Stress Volume \_\_\_\_\_  
Gross Volume \_\_\_\_\_  
Volume Brak \_\_\_\_\_  
Brak Volume \_\_\_\_\_

Pressure Volume \_\_\_\_\_  
Gross Volume \_\_\_\_\_  
Volume Control \_\_\_\_\_  
Volume \_\_\_\_\_

Net Weight \_\_\_\_\_  
Net Weight \_\_\_\_\_  
Net Weight \_\_\_\_\_

CE 002 000207 Part No. 000207

ABSORBER NH3 + 134.5 g NA3CR4 + 10.1 g g max + 21.5 g

CDX HFC, R602, F602, F602, F602

200112  
R602, R602, R602, R602

**SPECIMEN**

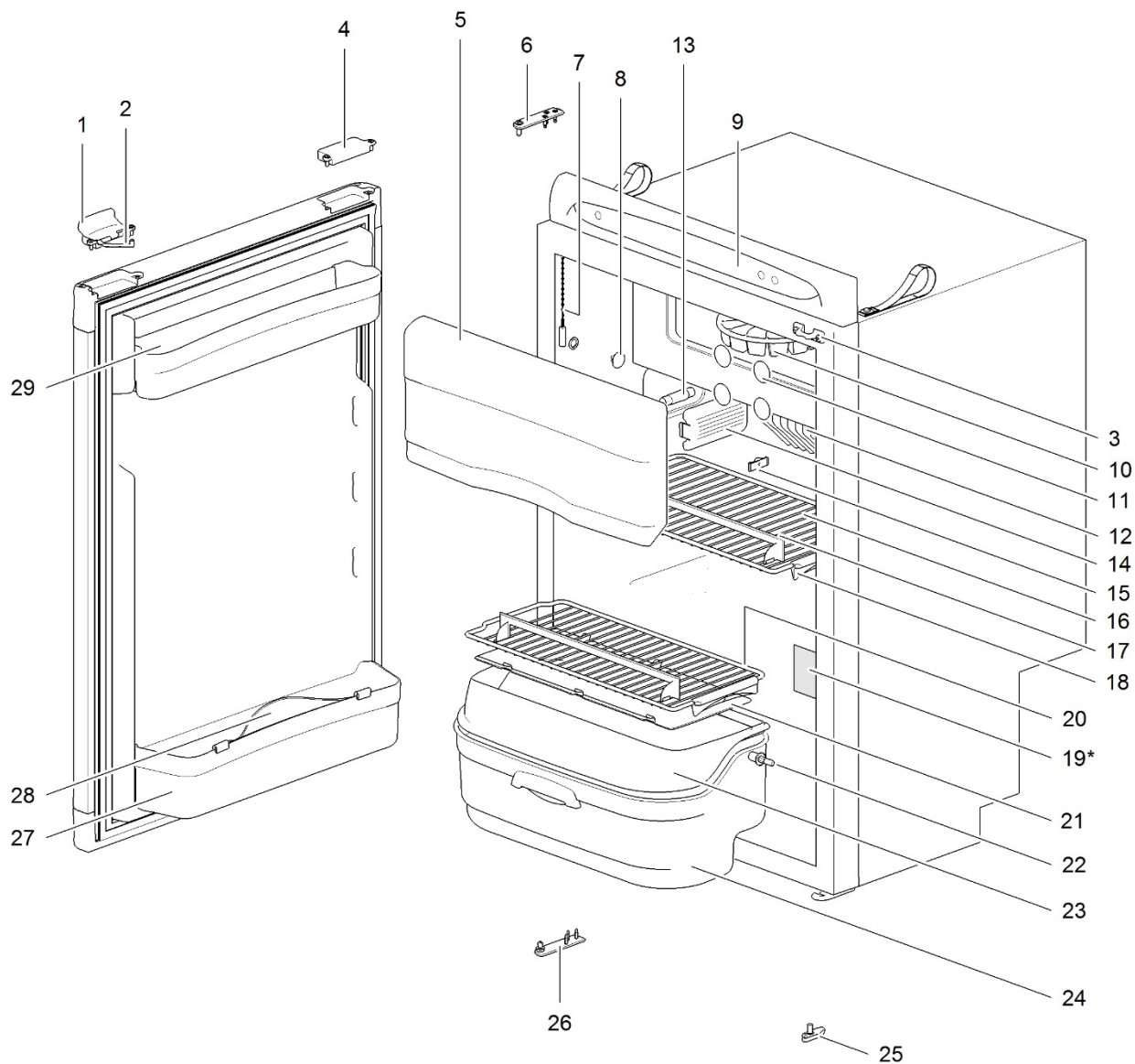
**00131000611**

LE1074\_N104-N110-front



		Spare part number	Spare part number	Spare part number	Colours available
1	Latch V1 N104 Latch V1 N110 < 01/07/2005			62700 7	90
	Latch V2 ≥ 01/07/2005		not available replacement = 626985 27	626985	27
2	Storage strap V1 < 01/07/2005	624679			27
	Storage strap V2 ≥ 01/07/2005	626986			27
3	Strike plate				
4	Pocket cover				
5	Freezer door		690852		
	Hinge freezer door	624680			08
6	Hinge plate				
7	Interior light switch	623018			08
8	Cap (2x)	623622			08
9	Control panel	Refer to page 24			
10	Ice cube tray				
11	Cap freezer bolt (12x)	624479			08
12	Fin				
13	Interior light bulb	624003			
14	Interior light cover	624002			
15	Fin clip (3x)	623023			
16	Shelf 455 x 118.2	623047			08
17	Clip shelf small	623626			08
18	Identification label *				
19	Shelf 455 x 212.3	623055			08
20	Clip shelf large	623625			08
21	Shelf food retainer	624456			08
22	Shelf tray insert 403 x 192	623635			12
23	Hinge pin				
24	Flip top cover	623615			
25	Vegetable bin	623618			
26	Latch bottom	624001			27
27	Hinge plate				
28	Door bin				
29	Bottle retainer	623042			12
30	Door bin	624025			12

\* With a request for information or service, always provide the serial number of the refrigerator. The serial number is the code below the barcode on the identification label.

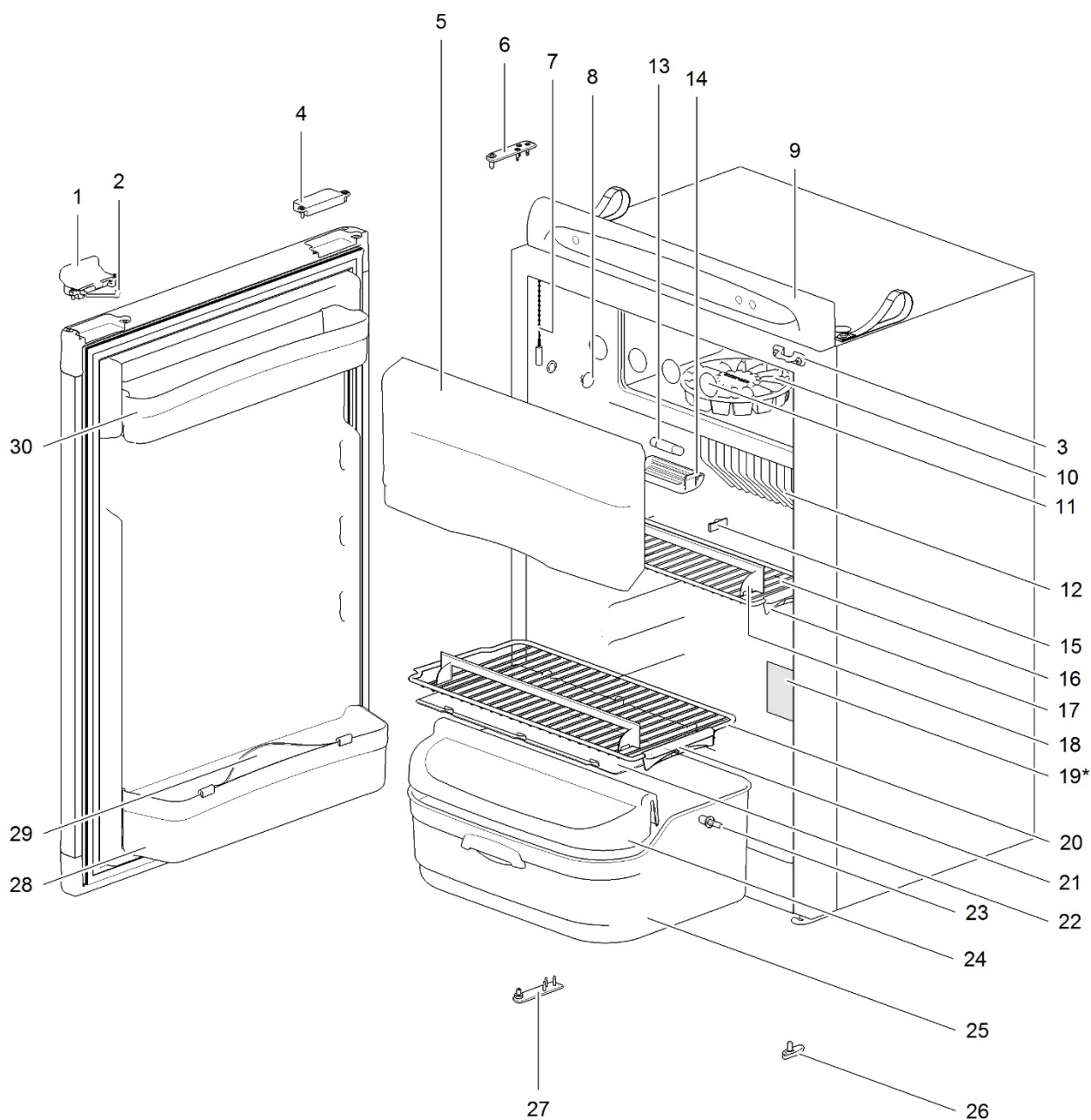


19\*



		Spare part number	Spare part number	Colours available
1	Latch V2		626985	27
2	Storage strap V2	626986		27
3	Strike plate			
4	Pocket cover			
5	Freezer door		690852	
	Hinge freezer door	624680		08
6	Hinge plate			
7	Interior light switch	623018		08
8	Cap (2x)	623622		08
9	Control panel	<i>Refer to page 24</i>		
10	Ice cube tray			
11	Cap freezer bolt (12x)	624479		08
12	Fin			
13	Interior light bulb	624003		
14	Interior light cover	624002		
15	Fin clip (3x)	623023		
16	Shelf 453.8 x 205	623051		08
17	Shelf food retainer	624456		08
18	Clip shelf large	623625		08
19	Identification label *			
20	Shelf 453.8 x 180	626643		08
21	Shelf tray insert	626642		12
22	Hinge pin			
23	Top cover	626641		12
24	Vegetable bin	623617		
25	Latch bottom	624001		27
26	Hinge plate			
27	Door bin	690818		08
28	Bottle retainer	623042		12
29	Door bin	690817		08

\* With a request for information or service, always provide the serial number of the refrigerator. The serial number is the code below the barcode on the identification label.

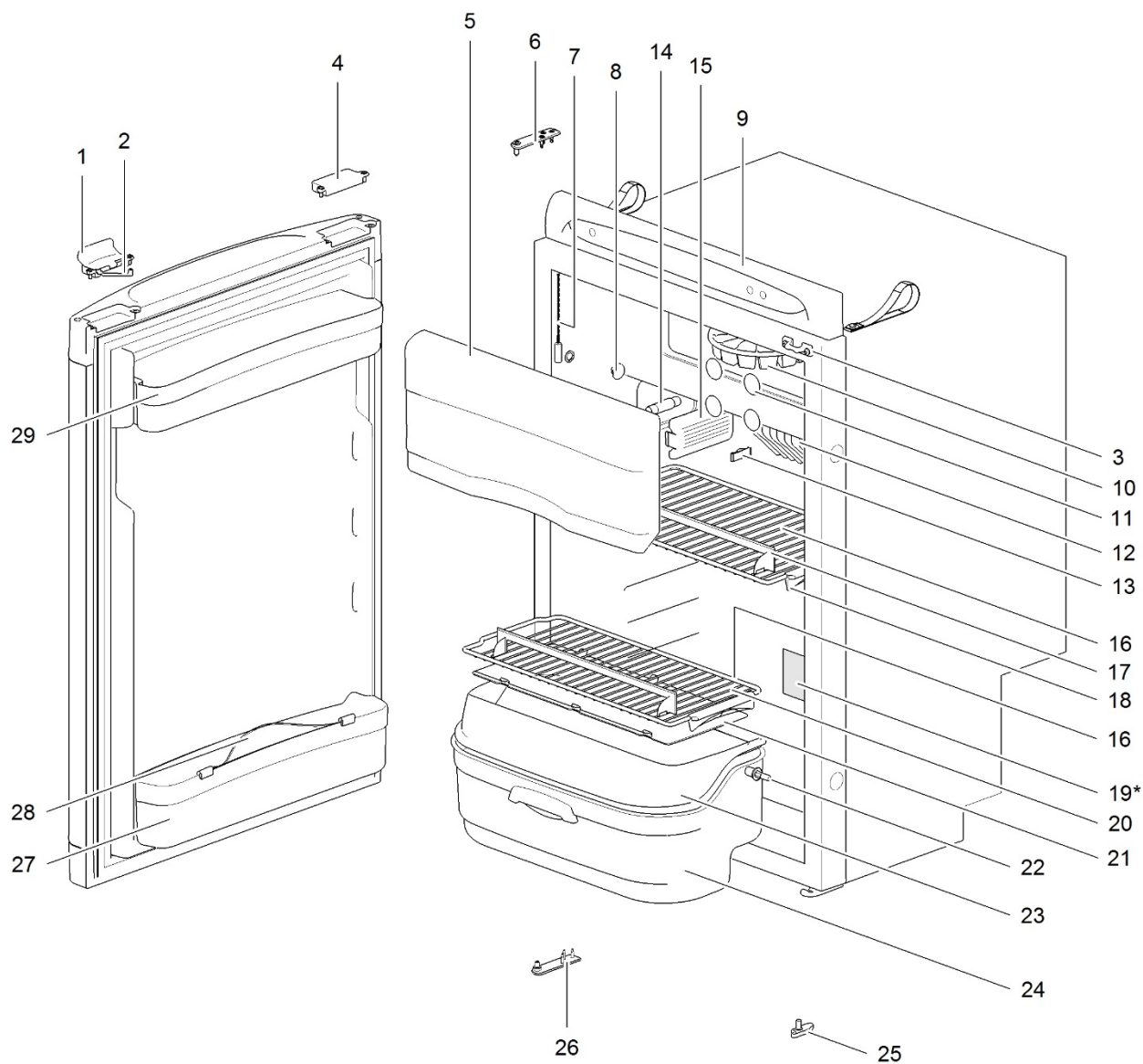


19\*

[illegible]

		Spare part number	Spare part number	Colours available
1	Latch V2		626985	27
2	Storage strap V2	626986		27
3	Strike plate			
4	Pocket cover			
5	Freezer door		690852	
	Hinge freezer door	624680		08
6	Hinge plate			
7	Interior light switch	623018		08
8	Cap (2x)	623622		08
9	Control panel	<i>Refer to page 24</i>		
10	Ice cube tray			
11	Cap freezer bolt (12x)	624479		08
12	Fin			
13	Interior light bulb	624003		
14	Interior light cover	624002		
15	Fin clip (3x)	623023		
16	Shelf 455 x 118.2	623047		08
17	Clip shelf small	623626		08
18	Shelf food retainer	624456		08
19	Identification label *			
20	Shelf 455 x 212.3	623055		08
21	Clip shelf large	623625		08
22	Shelf tray insert 403 x 192	623635		12
23	Hinge pin			
24	Flip top cover	623615		
25	Vegetable bin	623618		
26	Latch bottom	624001		27
27	Hinge plate			
28	Door bin	<i>not available</i>		
29	Bottle retainer	623042		12
30	Door bin	624025		12

\* With a request for information or service, always provide the serial number of the refrigerator. The serial number is the code below the barcode on the identification label.

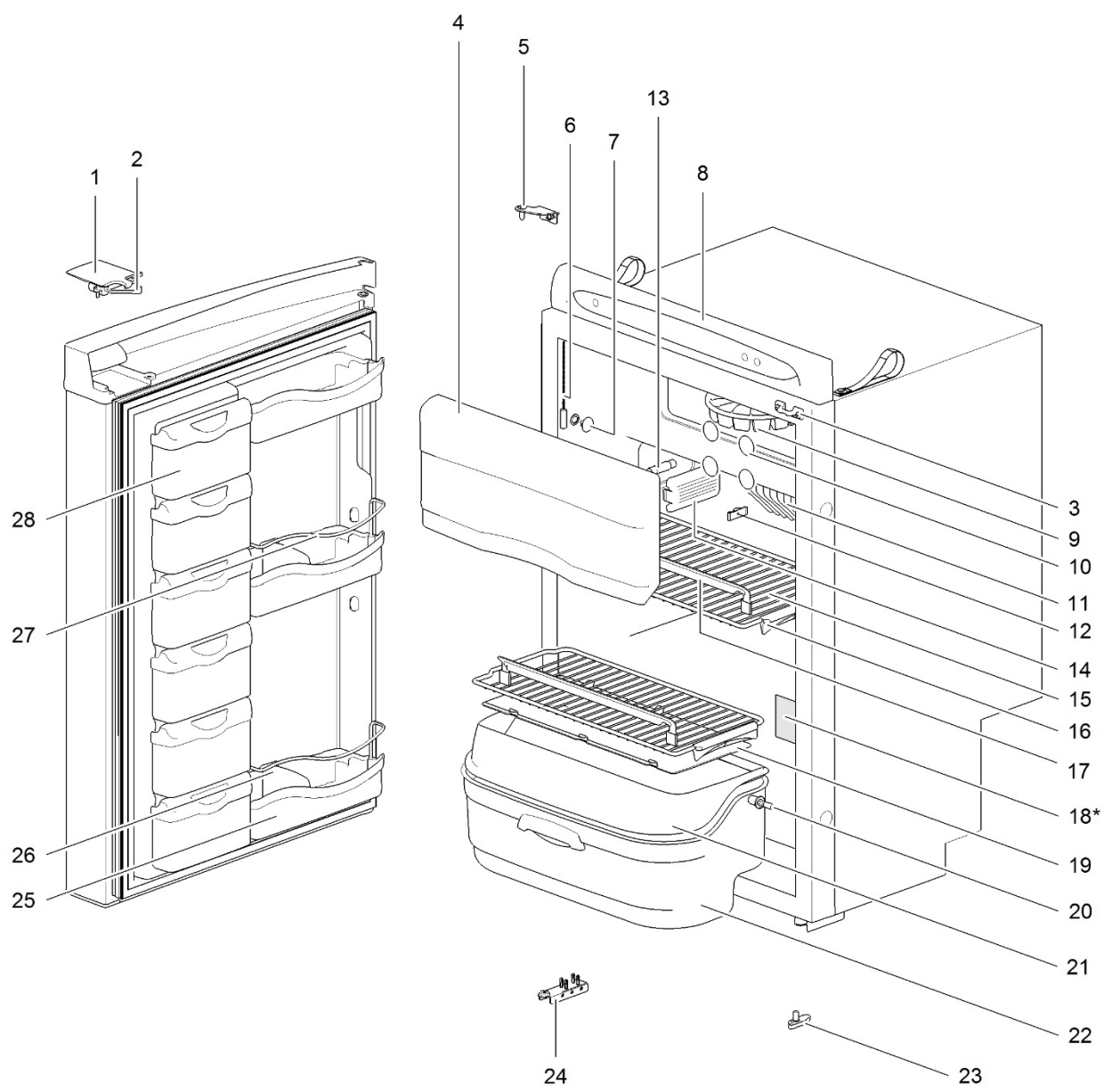


19\*

[illegible]

		Spare part number	Spare part number	Spare part number	Colours available
1	Latch V1 < 01/07/2005				
	Latch V2 ≥ 01/07/2005		not available replacement = 626985 27	626985	27
2	Storage strap V1 < 01/07/2005	624679			27
	Storage strap V2 ≥ 01/07/2005	626986			27
3	Strike plate				
4	Pocket cover				
5	Freezer door		690852		
	Hinge freezer door	624680			08
6	Hinge plate				
7	Interior light switch	623018			08
8	Cap (2x)	623622			08
9	Control panel	Refer to page 24			
10	Ice cube tray				
11	Cap freezer bolt (12x)	624479			08
12	Fin				
13	Fin clip (3x)	623023			
14	Interior light bulb	624003			
15	Interior light cover	624002			
16	Shelf 453.8 x 205	623051			08
17	Shelf food retainer	624457			08
18	Clip shelf large	623625			08
19	Identification label *				
20	Shelf 453.8 x 180	626643			08
21	Shelf tray insert	626642			12
22	Hinge pin				
23	Top cover	626641			12
24	Vegetable bin	623617			
25	Latch bottom	624001			27
26	Hinge plate				
27	Door bin	not available			
28	Bottle retainer	623042			12
29	Door bin	625102			12

\* With a request for information or service, always provide the serial number of the refrigerator. The serial number is the code below the barcode on the identification label.



18\*



LE1079\_N115-Front\_0614-V02



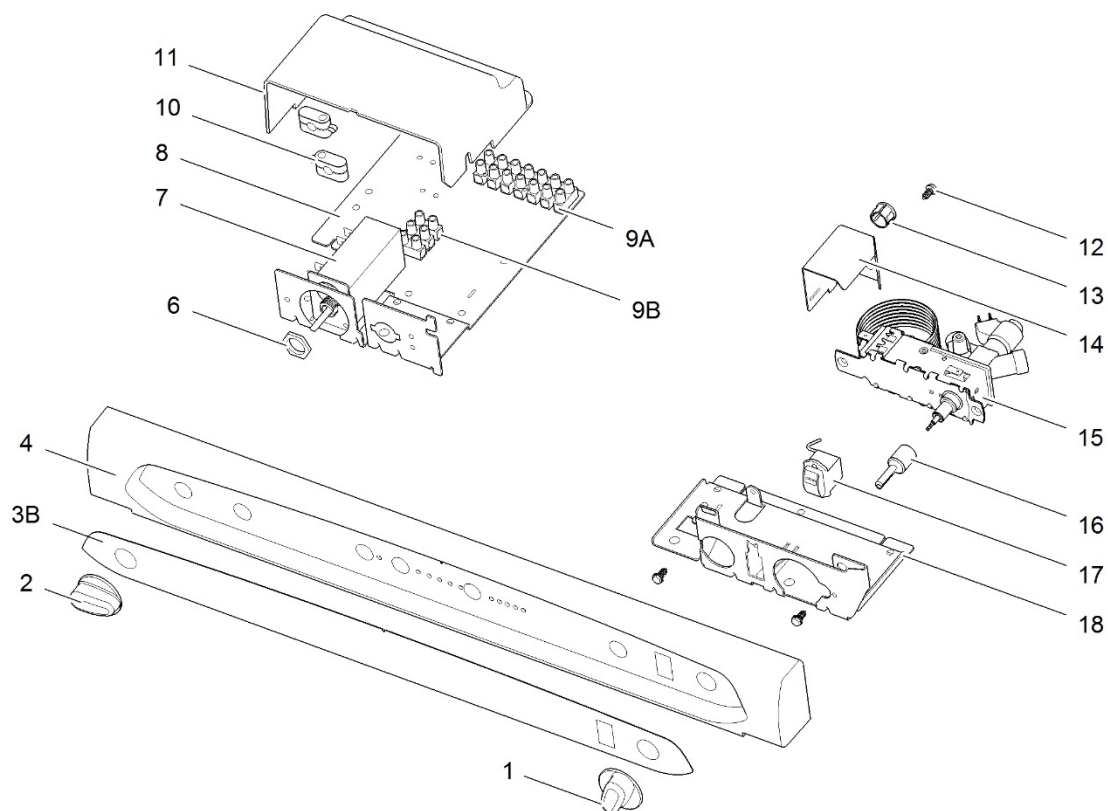
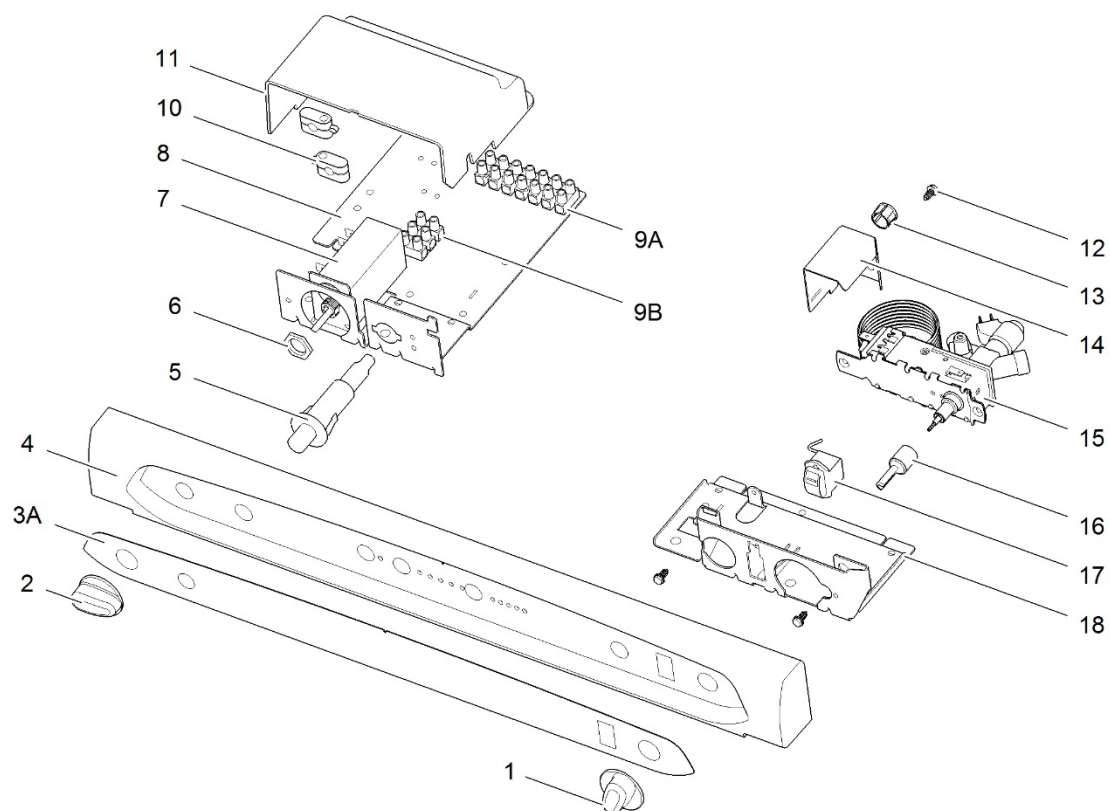
		Spare part number	Spare part number	Colours available
1	Latch		629744	90
2	Storage strap	626986		27
3	Strike plate			
4	Freezer door		690852	
	Hinge freezer door (2x)	624680		08
5	Hinge plate			
6	Interior light switch	623018		08
7	Cap (2x)	623622		08
8	Control panel	<i>Refer to page 24</i>		
9	Ice cube tray			
10	Cap freezer bolt (12x)	624479		08
11	Fin			
12	Fin clip (3x)	623023		
13	Interior light bulb	624003		
14	Interior light cover	624002		
15	Shelf 453.8 x 205	623051		08
16	Clip shelf large	623625		08
17	Shelf food retainer	624457		08
18	Identification label *			
19	Shelf tray insert	626642		12
20	Hinge pin			
21	Top cover	626641		12
22	Vegetable bin	623617		
23	Latch bottom	629721		
24	Hinge bottom			
25	Door bin	629745		12
26	Bottle retainer	626989		12
27	Rail	<i>not available</i>		
28	Door bin	629747		12

\* With a request for information or service, always provide the serial number of the refrigerator. The serial number is the code below the barcode on the identification label.



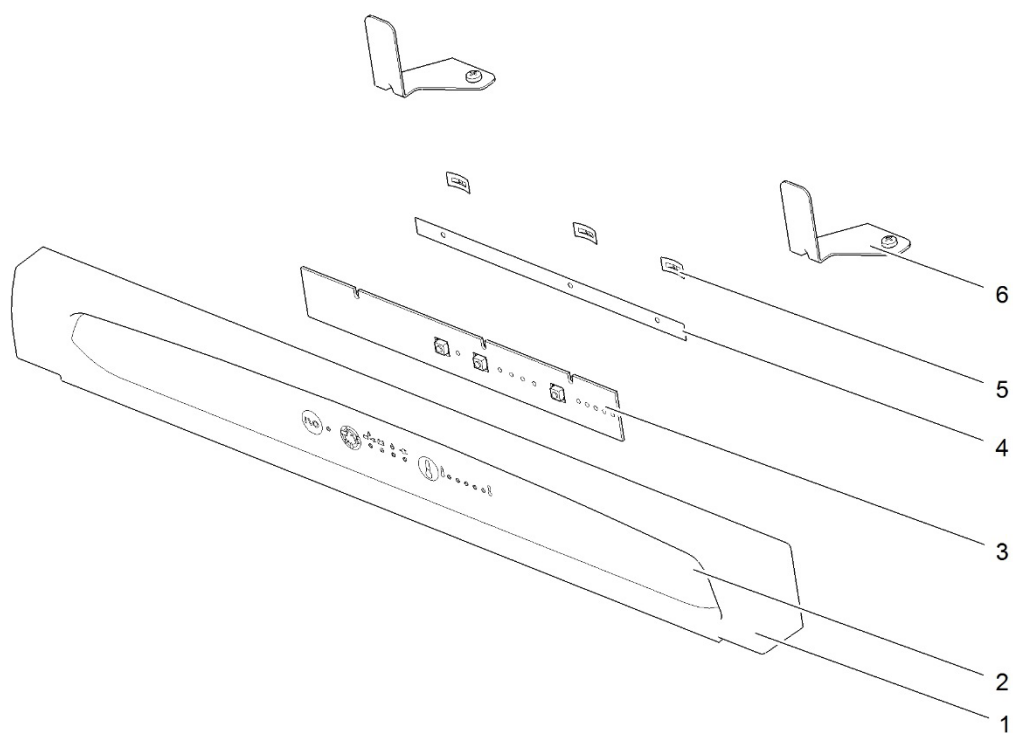
		Spare part number	Spare part number	Colours available
1	Latch		626985	27
2	Storage strap (2x)	626986		27
3	Strike plate			
4	Pocket cover			
5	Cover center hinge			
6	Center hinge plate			
7	Hinge plate			
8	Cap (2x)	623622		08
9	Cap freezer bolt (12x)	624479		08
10	Shelf 405 x 188.5	623633		08
11	Ice cube tray			
12	Control panel	Refer to page 28		
13	Interior light bulb	624003		
14	Interior light cover	624002		
15	Fin			
16	Shelf 428.5 x 143.1	623044		08
17	Clip shelf small	623626		08
18	Fin clip (3x)	623059		
19	Thermistor	623077		
20	Shelf food retainer	624456		08
21	Shelf 427.5 x 203.3	623045		08
22	Identification label *			
23	Clip shelf large	623625		08
24	Shelf tray insert 371.3 x 183	623636		12
25	Hinge pin			
26	Flip top cover	623616		
27	Vegetable bin	not available		
28	Latch bottom	624001		27
29	Hinge plate			
30	Door bin (2x)	690804		08
31	Bottle retainer	623042		12
32	Door bin	not available		

\* With a request for information or service, always provide the serial number of the refrigerator. The serial number is the code below the barcode on the identification label.



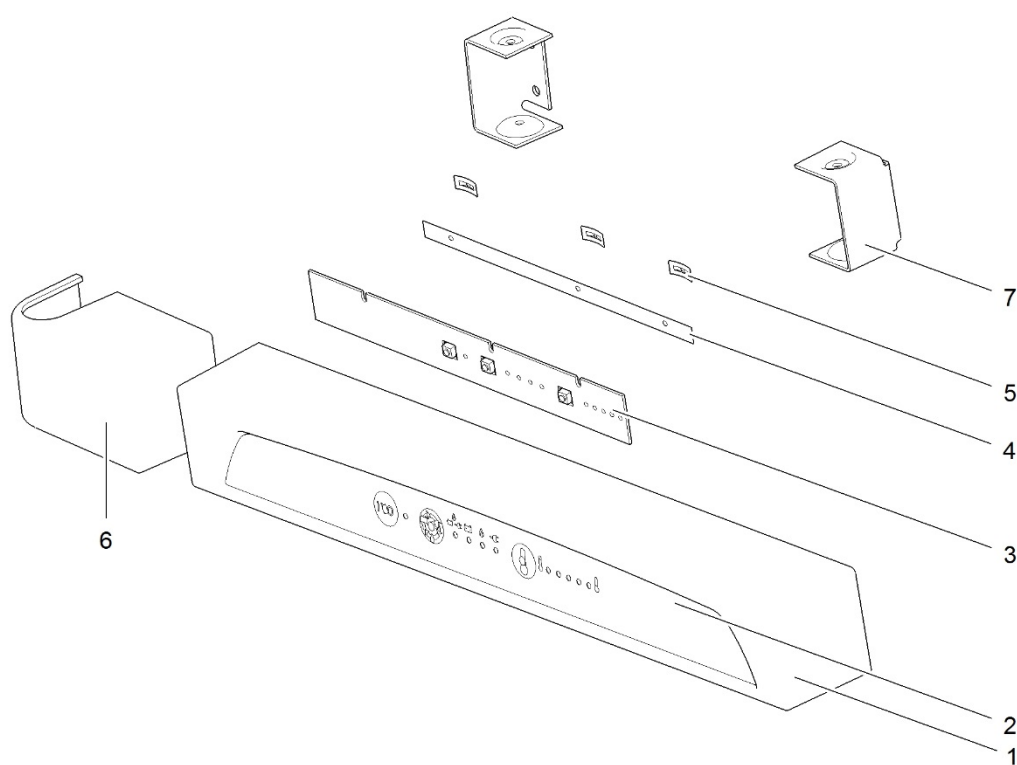
		Spare part number	Spare part number	Spare part number	Colours available
1	Control knob	623026			27
2	Control knob				
3A	Overlay Piezo	626620 <i>Width 486</i>	626622 <i>Width 525</i>		
3B	Overlay Electric	626621 <i>Width 486</i>	626623 <i>Width 525</i>		
4	Control panel (N80 not available)	<del>627002</del> *			07
5	Piezo igniter	625689			
6	Nut				
7	Selector switch < 01/07/2005		623400 <i>5 pole</i>	626999 <i>6 pole</i>	
	≥ 01/07/2005				
8	Bracket				
9A	Terminal strip DC				
9B	Terminal strip AC				
10	Strain relief				
11	Control cover				
12	Screw (3x)				
13	Bushing				
14	AC cover TGV				
15	Manual gas valve V1 <i>Last fridge production 17-01-2005</i> <i>Serial number: &lt;E017E.....</i>		<i>not available anymore</i>		
15	Manual gas valve V2		625688		07
16	Axle TGV				
17	Flame meter	623029			
18	Bracket TGV				

~~xxxxx~~\* = not available anymore



		Spare part number	Colours available
1	Control panel	<del>627002</del> *	<del>07</del>
2	Overlay		
3	Display board LED V2	<del>626997</del>	
4	Insulator		
5	Push on nut		
6	Bracket		

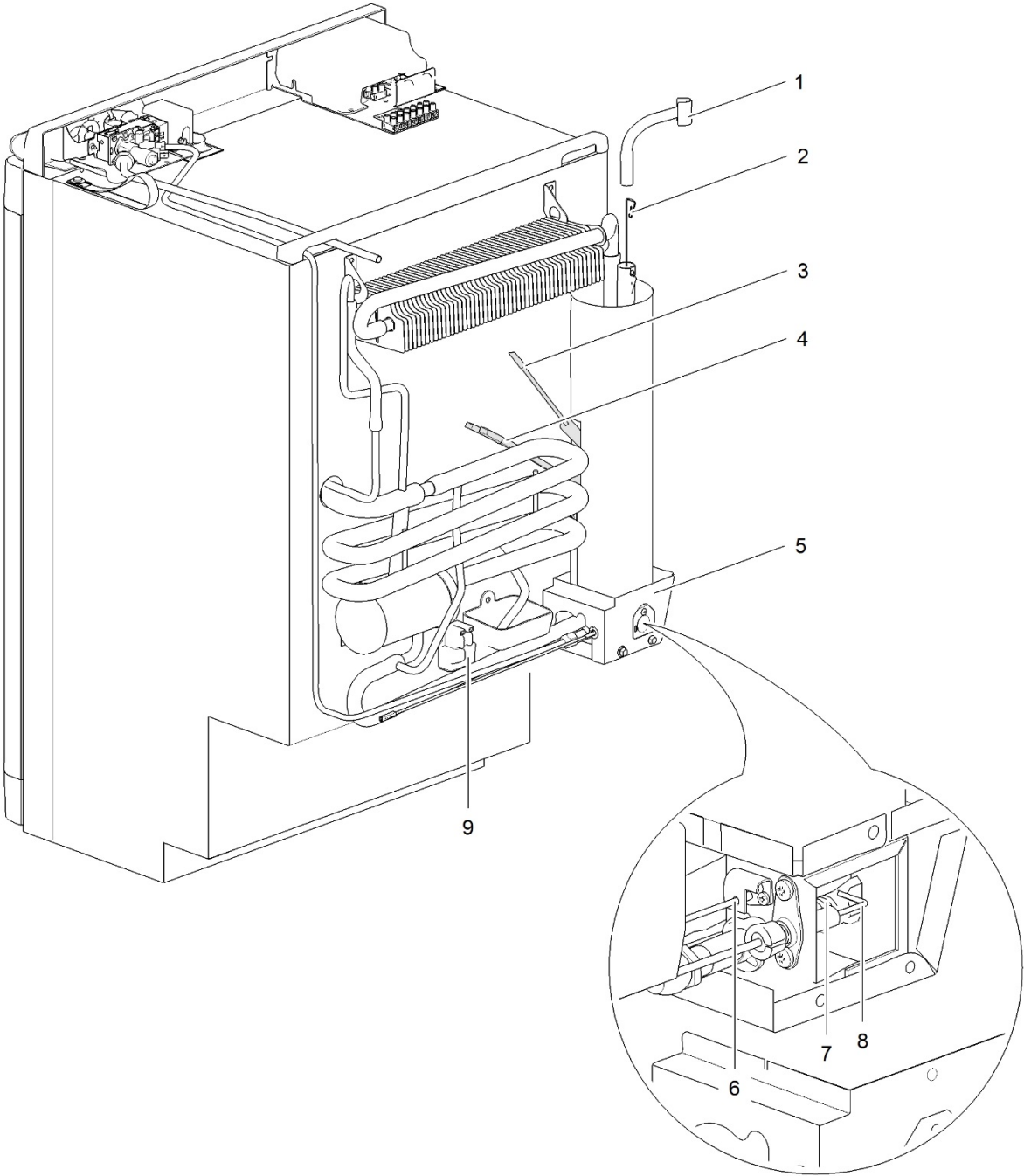
~~xxxxx~~\* = not available anymore





		Spare part number	Spare part number	Colours available
1	Control panel			
2	Overlay			
3	Display board LED V2*			
4	Insulator			
5	Push on nut			
6	Cover center hinge			
7	Bracket			

\* Contact Thetford for information on this spare part



		Spare part number	Spare part number	Colours available
1	Exhaust tube long	624480		
2	Heat diffuser			
3	Heater AC			
	< 01/07/2005 (E182E.....)	623064		
	01/07/2005 - 14/05/2009	628450		
	≥ 14/05/2009 (E134K.....)	633570		
4	Heater DC			
	< 14/05/2009 (E134K.....)			
	≥ 14/05/2009 (E134K.....)	633571		
5	Burner box			
6	Thermocouple *			
	V1	623020		
	V2	625681		
7	Burner	623019		
8	Spark electrode	623021 <i>Electrical ignition</i>	627004 <i>Piezo ignition</i>	
9	Electronic igniter	623022		

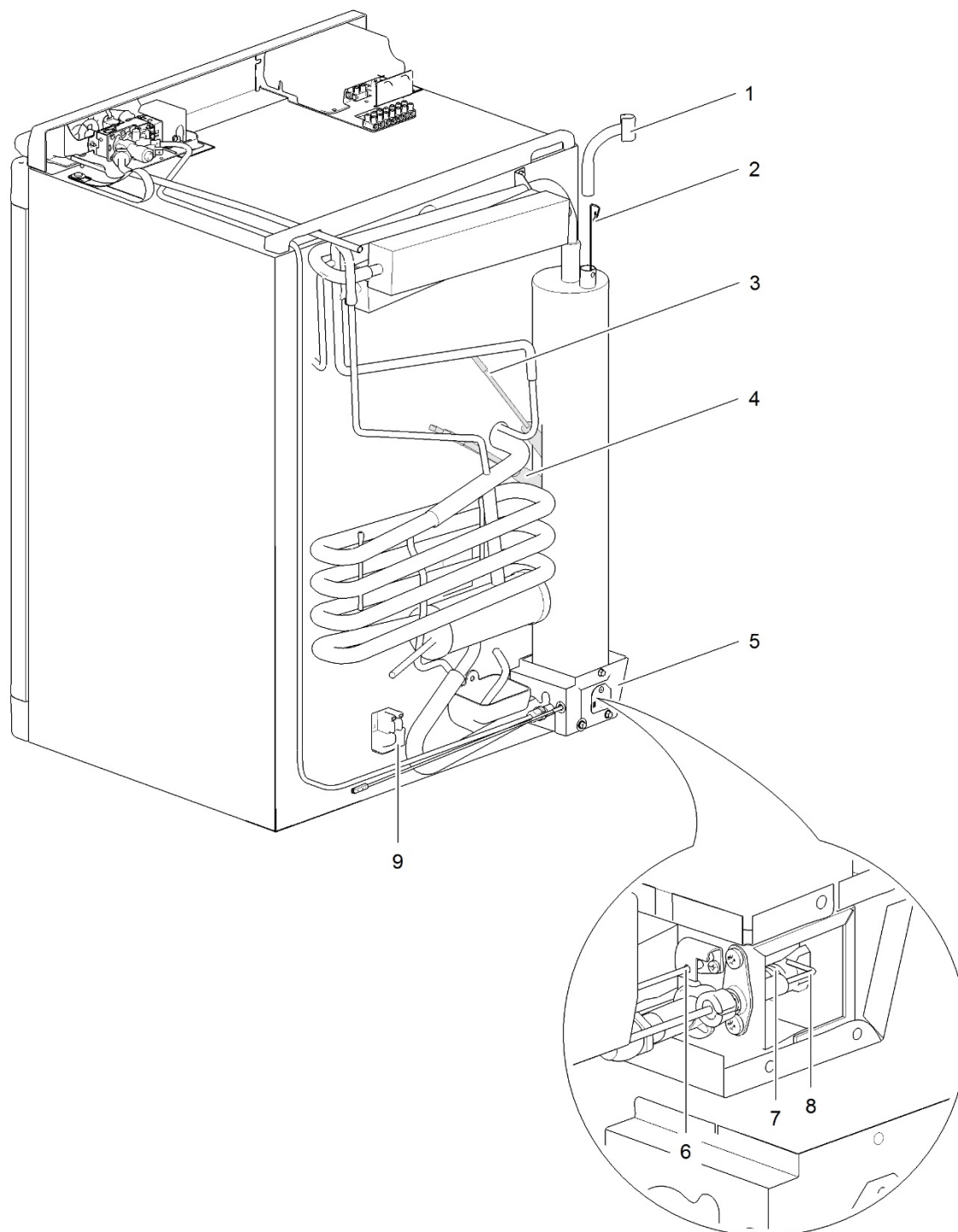
\*

V1



V2





LE1082\_N100-N104-N110-back\_0913-V01

		Spare part number	Spare part number	Colours available
1	Exhaust tube short	627008		
2	Heat diffuser			
3	Heater AC			
	< 01/07/2005 (E182E.....)	623064		
	01/07/2005 - 09/06/2009	628450		
	≥ 09/06/2009 (E160K.....)	633570		
4	Heater DC			
	< 09/06/2009 (E160K.....)			
	≥ 09/06/2009 (E160K.....)	633571		
5	Burner box			
6	Thermocouple*			
	V1	623020		
	V2	625681		
7	Burner	623019		
8	Spark electrode	623021	627004	
		<i>Electrical ignition</i>	<i>Piezo ignition</i>	
9	Electronic igniter	623022		

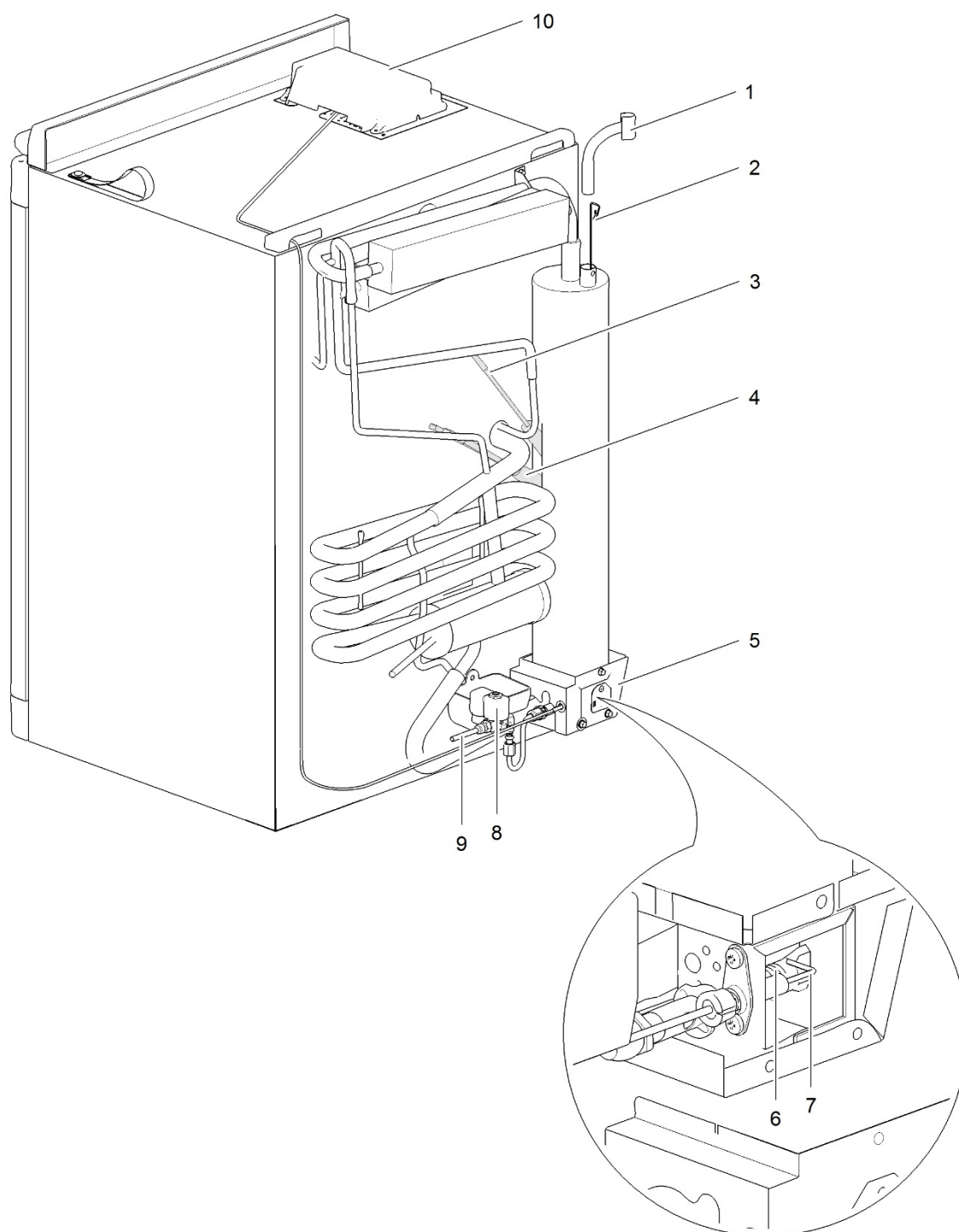
\*

V1



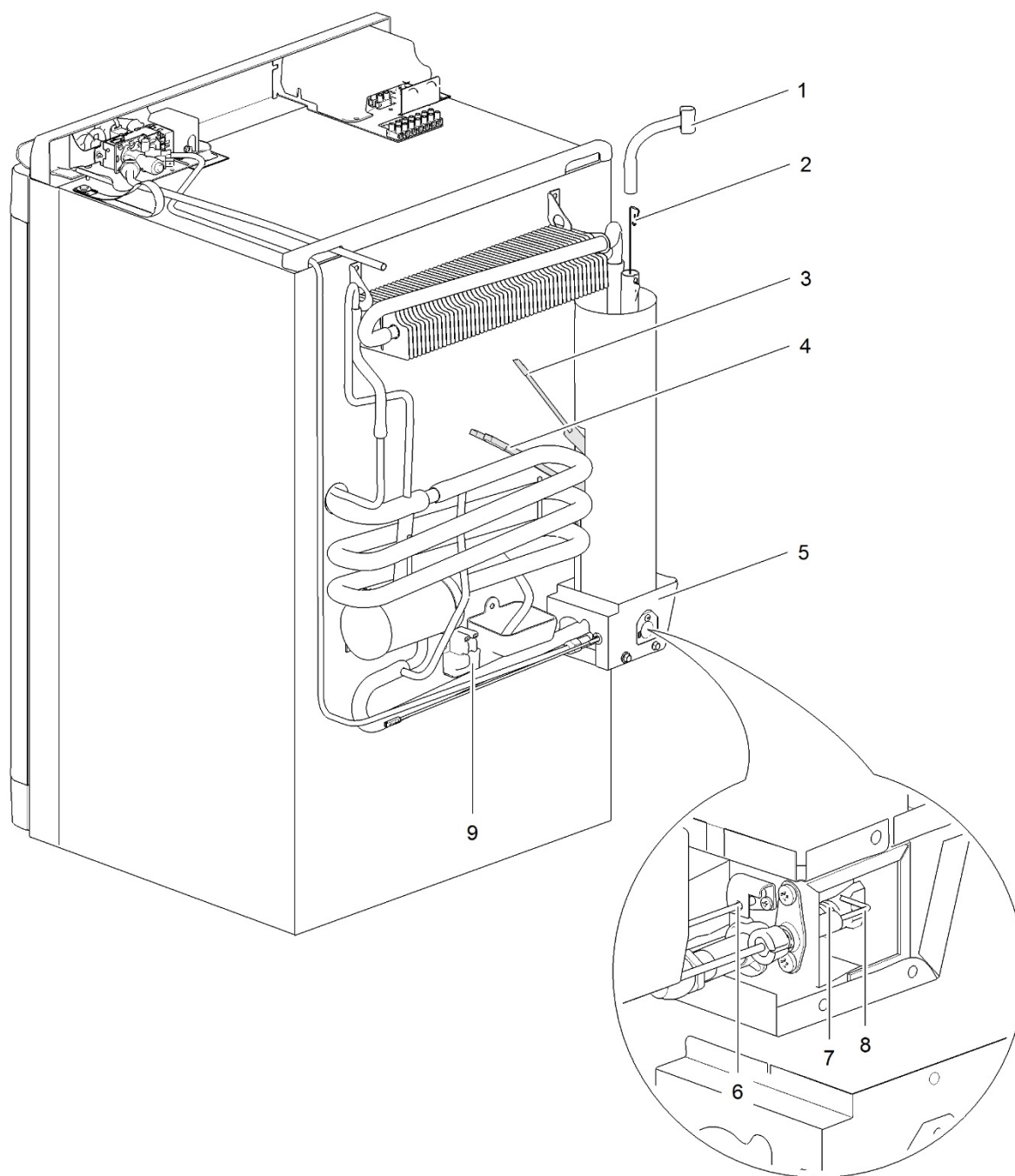
V2





		Spare part number	Spare part number	Colours available
1	Exhaust tube short	627008		
2	Heat diffuser			
3	Heater AC	623064		
4	Heater DC			
5	Burner box			
6	Burner	623019		
7	Spark electrode	623623		
8	Gas valve			
9	Gas pipe			
10	Power control board*			

\* Contact Thetford for information on this spare part



LE1084\_N109-back\_0913-V01



		Spare part number	Spare part number	Colours available
1	Exhaust tube long	624480		
2	Heat diffuser			
3	Heater AC			
	< 01/07/2005 (E182E.....)	623064		
	01/07/2005 - 14/05/2009	628450		
	≥ 14/05/2009 (E134K.....)	633570		
4	Heater DC			
	< 14/05/2009 (E134K.....)			
	≥ 14/05/2009 (E134K.....)	633571		
5	Burner box			
6	Thermocouple *			
	V1	623020		
	V2	625681		
7	Burner	623019		
8	Spark electrode	623021 <i>Electrical ignition</i>	627004 <i>Piezo ignition</i>	
9	Electronic igniter	623022		

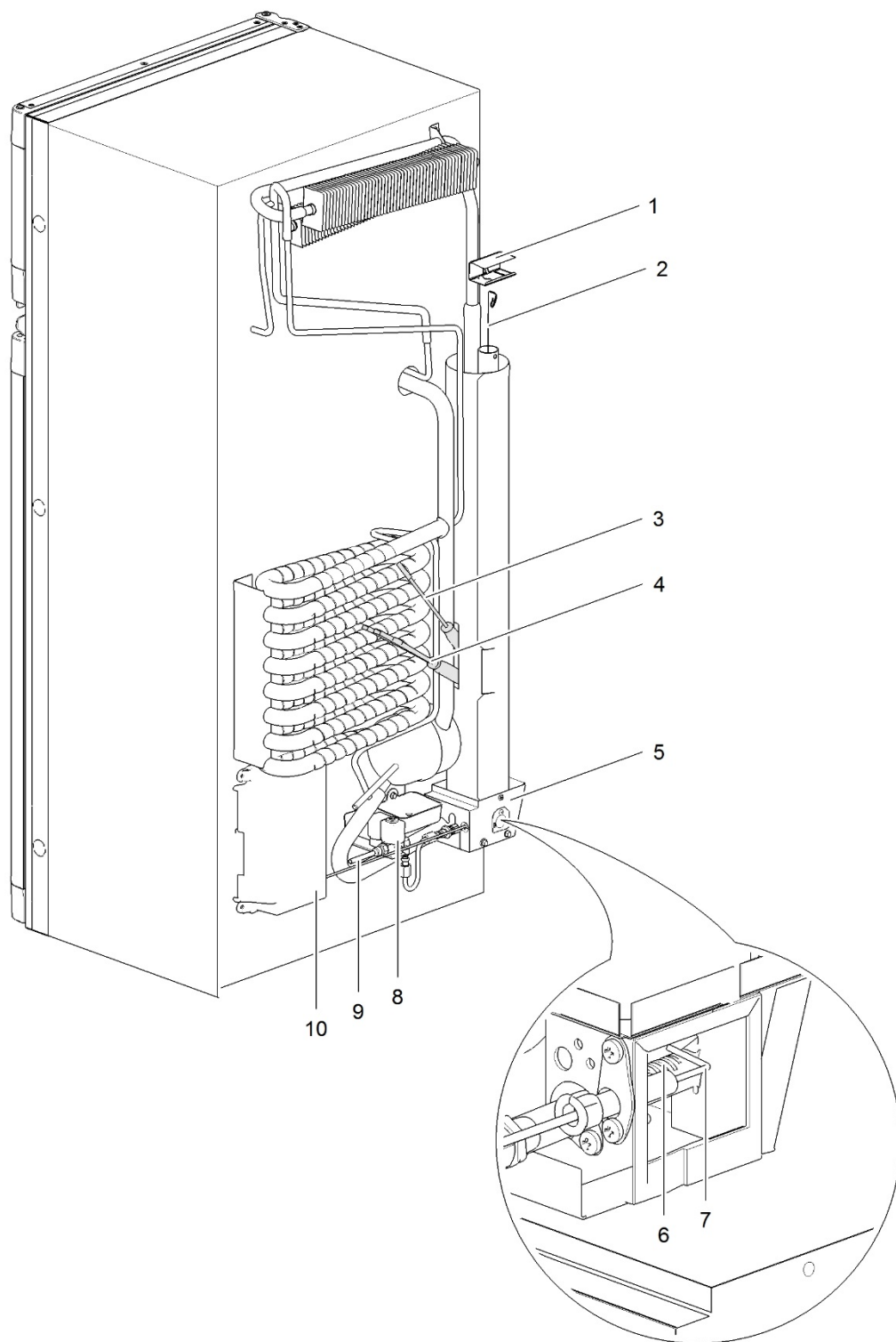
\*

V1



V2





		Spare part number	Spare part number	Colours available
1	Heat cap			
2	Heat diffuser			
3	Heater AC			
	< 17/01/2005 (E017E.....)	623074		
	≥ 17/01/2005 (E017E.....)	626990		
4	Heater DC			
	< 17/01/2005 (E017E.....)	Not available anymore		
	≥ 17/01/2005 (E017E.....)	626991		
5	Burner box			
6	Burner	623058		
7	Spark electrode	623076		
8	Gas valve			
9	Gas pipe			
10	Power control board V2			

Colour Numbers	Description	Colour reference
07	Traffic Grey	RAL 7042
08	White	MP 1013 MP FR 85 R7
12	Blue	RAL 5012
27(R)	Black	RAL 9005
30	Mocha	NCS S 2005-Y40R
90	Anthracite Grey	RAL 7016
136	Black Grey	RAL 7021
138R	Piano Black	AM50CI EG schwarz 8325 VA 82-99139/10